



The Warehouse, 4 Plumpton Street  
£1,050 pcm

 **Comfort**  
Estates



## The Warehouse, Nottingham

Comfort Estates are delighted to present this exceptional two-bedroom duplex apartment, located within a characterful converted warehouse in the heart of Nottingham's historic Lace Market.

Offering a unique blend of period charm and modern convenience, this beautifully presented home retains a wealth of original features including exposed brickwork, large Georgian-style windows and impressive timber ceilings. The property is offered fully furnished and benefits from a private terrace and secure allocated parking space.

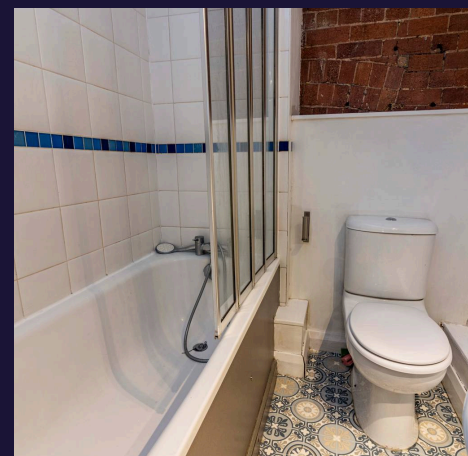
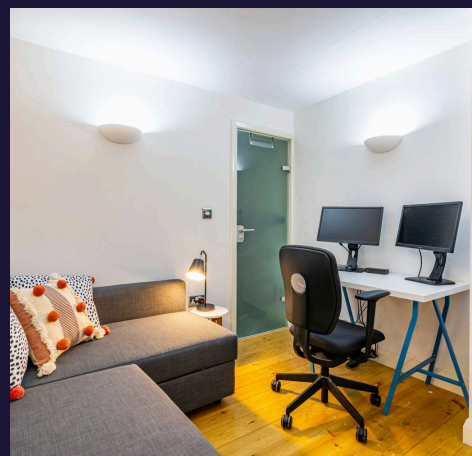
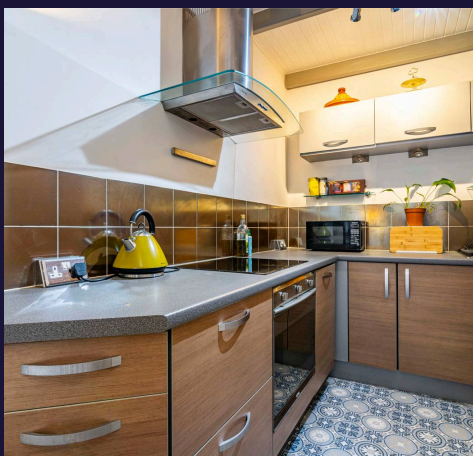
In brief, the accommodation comprises: entrance hallway with downstairs WC, spacious open-plan living, dining and kitchen area with French doors opening onto a private terrace, two double bedrooms, and a Jack and Jill bathroom.

Situated just moments from Nottingham's vibrant city centre, residents can enjoy an excellent selection of restaurants, bars, cafés, shops and transport links, all within easy walking distance. Despite its central location, the apartment enjoys a tucked-away position, providing a peaceful retreat from the bustle of city life.

Available from 10th July 2026.

Please note that the cabinet shown within the living room photographs will not be included within the tenancy.

Contact Comfort Estates today to arrange your viewing.





### **Open Plan Living Space**

15' 7" x 13' 6" (4.75m x 4.12m)

A spacious open plan living space with beautiful original features, including exposed brick walls and sash windows. The space is neutrally decorated with light carpets, uplighters and an exposed mezzanine wood ceiling. It comes fully furnished. French doors lead out on to the terrace with space for a table and chairs – the perfect spot for relaxing, set back from the hustle and bustle of the city.

### **Kitchen**

11' 3" x 7' 1" (3.43m x 2.17m)

The kitchen comes fully fitted with a range of wood effect units and flooring. The property is fully furnished and includes an electric oven, induction hob and extractor, integrated fridge/freezer, slimline dishwasher and washing machine.

### **Bedroom 1**

13' 6" x 14' 11" (4.12m x 4.55m)

The property benefits from having two spacious double rooms. The first bedroom is decorated with exposed wooden flooring, light walls and exposed brickwork to the front. There is a Double metal bed frame with mattress, electric heater, large built in wardrobe with a sliding door and inside lighting. A beautiful wooden chest of drawers and side table can also be found in the room. The Jack and Jill bathroom attaches the two bedrooms.

### **Bedroom 2**

The second bedroom is decorated with exposed wooden flooring, neutral colours on the walls, wall mounted lights and electric heater. A modern double, corner, sofa bed with a white desk and office chair can also be found in the room.



### **Wc**

The WC is located in the hallway - it includes ceramic tile effect laminate flooring and painted white walls, wall hung wash hand basin, low flush WC and heated towel rail.

### **Hallway**

5' 2" x 5' 10" (1.58m x 1.77m)

Entrance into the hallway that allows plenty of storage for shoes and coats, with downstairs WC.

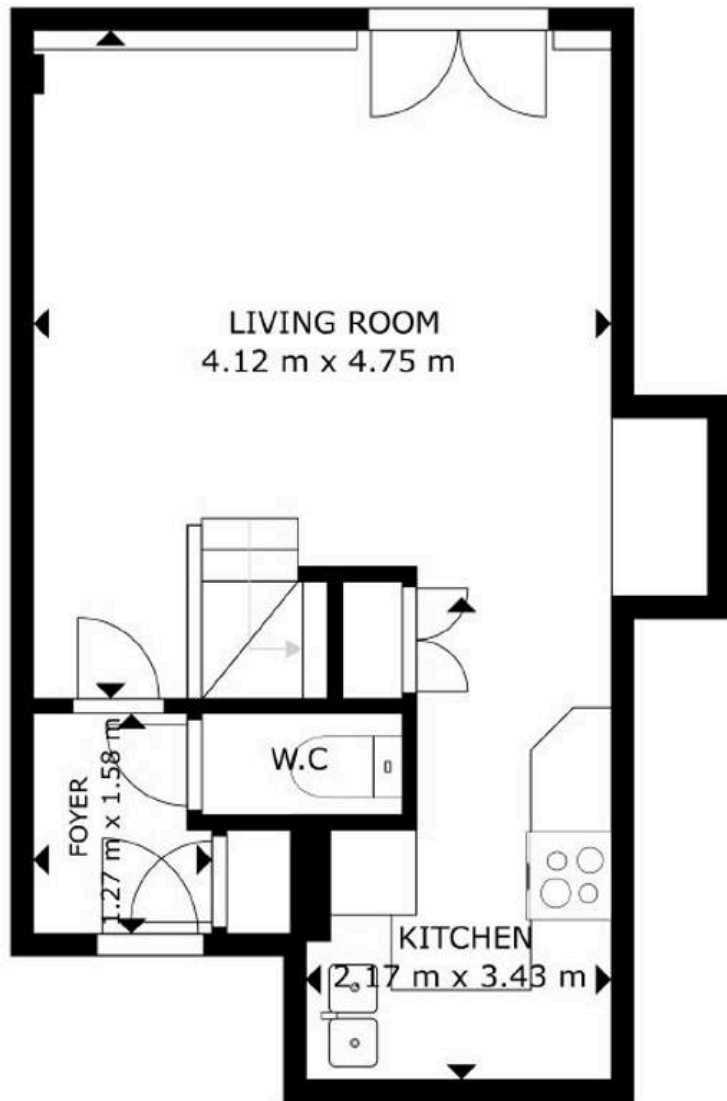
### **Bathroom**

8' 8" x 5' 3" (2.65m x 1.60m)

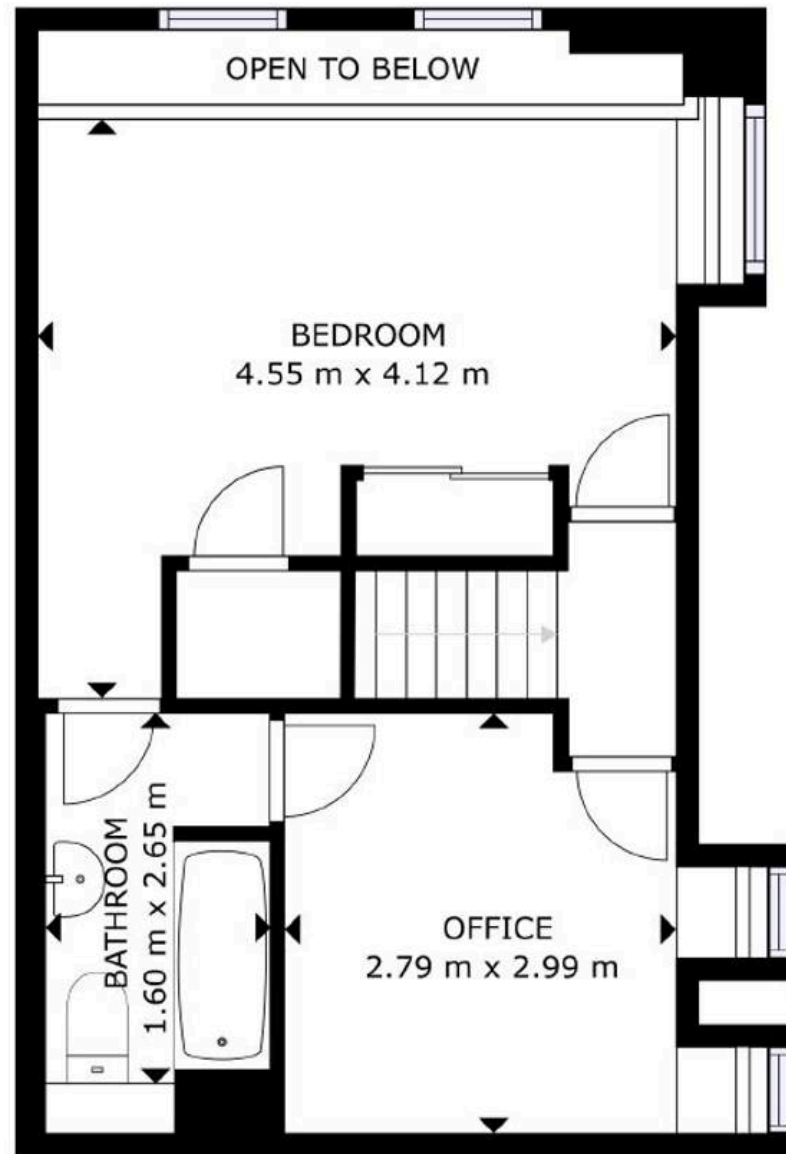
In the bathroom you will find a shower over the bath, wall hung wash hand basin, lighted mirror, low flush WC and electric towel rail. It is decorated with exposed brick, ceramic tile effect laminate flooring and white wall tiles.

### **The Warehouse**

The Lace Market is one of the most important historic areas of Nottingham. Once the home of Nottingham's world-renowned lace industry, you will now find the picturesque streets full of upmarket bars and restaurants, vintage boutiques and creative businesses. Beautiful architecture abounds in the form of grand red brick warehouses and ex lace factories. The Apartment is located in one such historic warehouse and benefits from many original and unique features such as beautiful exposed bricks and Georgian windows.



GROUND FLOOR



SECOND FLOOR



# Comfort Estates

Comfort Estates, 47 Derby Road - NG1 5AW

0115 933 8997 • [info@comfortestates.co.uk](mailto:info@comfortestates.co.uk) • [www.comfortestates.co.uk](http://www.comfortestates.co.uk)