



BALHAM HIGH ROAD, SW17

£485,000

- One Double Bedroom
- Victorian Conversion
- Spacious Shared Garden
- Open Plan Kitchen Diner
- Beautiful Condition
- Energy Rating: C



1



1



1



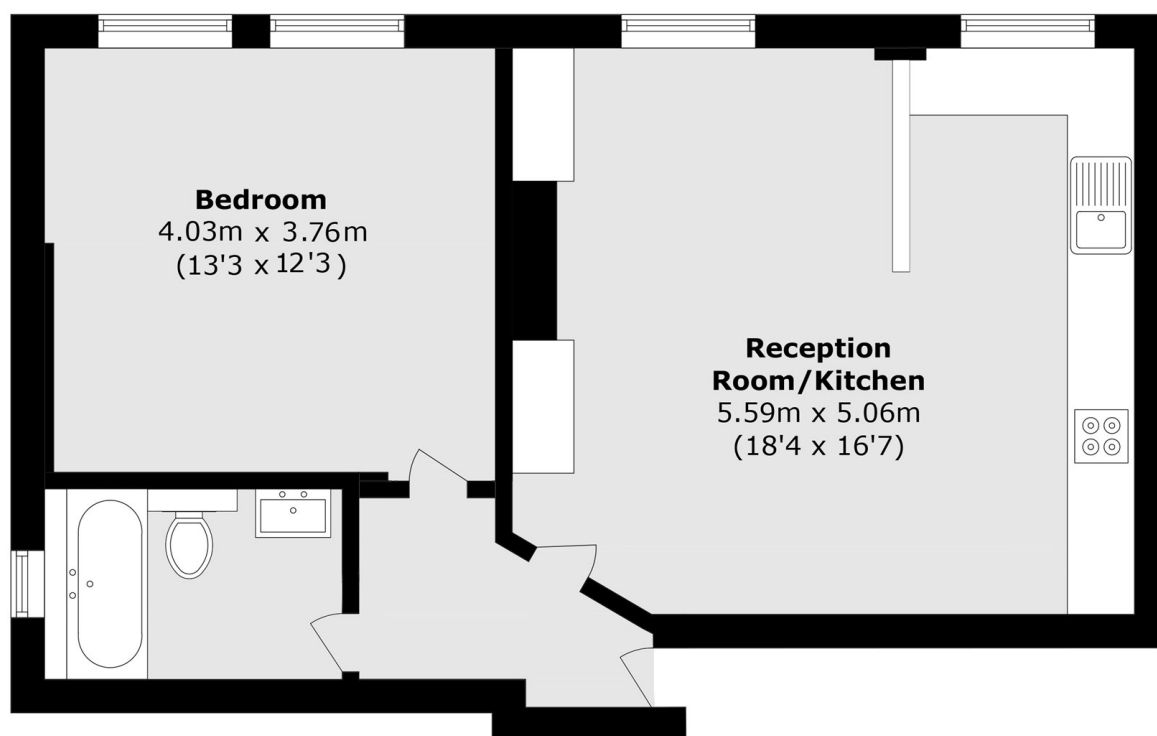
ABOUT THE HOME

A beautifully presented and spacious one bedroom first floor flat in a Victorian conversion on the cusp of the Heaver Estate in Balham. This flat also comprises of an large open plan kitchen diner, modern bathroom, and a sizable shared garden.

Balham high road is exceptionally well positioned between Balham station and Tooting Bec station as well as a plethora of shops, bars and restaurants being just moments away.







Total area (approx.): 52.7 sq. m (567.2 sq. ft)

JACKSONS BALHAM

8-11 Balham Station Road,
London, SW12 9SG
Sales: 020 8675 6555
Lettings: 020 8675 6565

Energy Rating: We aim to make our particulars both accurate and reliable. However they are not guaranteed; nor do they form part of an offer or contract. If you require clarification on any points then please contact us, especially if you're traveling some distance to view. Please note that appliances and heating systems have not been tested and therefore no warranties can be given as to their good working order.