



Clavering Court The Ridgeway
Hertford, SG14 2FU

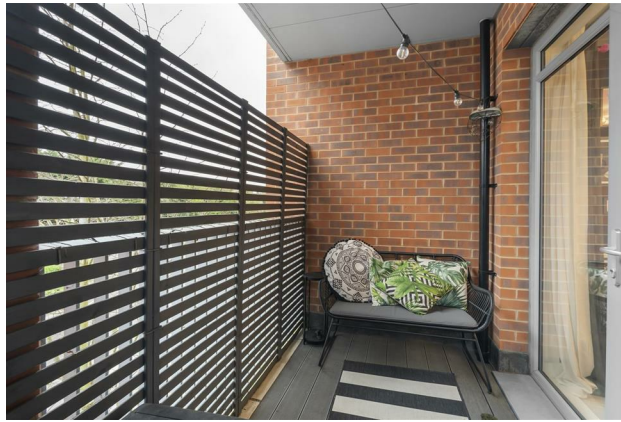
Asking price £107,500 (40% SHARE)



Clavering Court The Ridgeway, Hertford, SG14 2FU

****SHARED OWNERSHIP 50% SHARE****

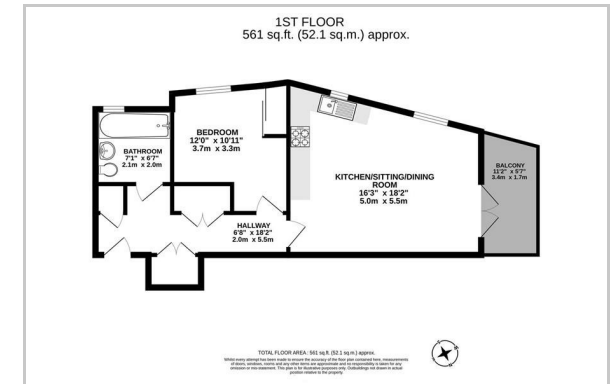
This contemporary and beautifully presented one-bedroom first-floor apartment, constructed in 2019, offers a perfect blend of modern style and practical living. Offering generous proportions for a one-bedroom home, the property features a private balcony, a modern kitchen and bathroom, and ample storage throughout. Boasting a long 119-year lease and the rare flexibility of being available for 100% ownership at £230,000 or a 50% shared ownership at £115,000, it represents an excellent opportunity for first-time buyers or professionals. The home is defined by its bright, dual-aspect living spaces, high-quality finishes, and the added convenience of lift access and a dedicated parking space.



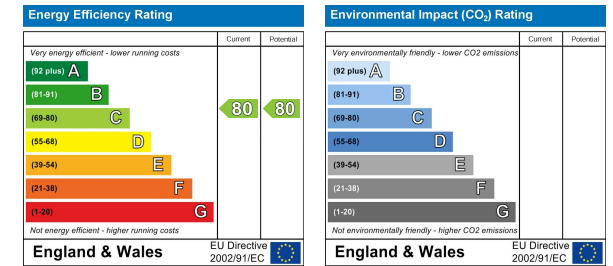
Area Map



Floor Plan



Energy Efficiency Graph



These particulars, whilst believed to be accurate are set out as a general outline only for guidance and do not constitute any part of an offer or contract. Intending purchasers should not rely on them as statements of representation of fact, but must satisfy themselves by inspection or otherwise as to their accuracy. No person in this firm's employment has the authority to make or give any representation or warranty in respect of the property.

Sopers House Sopers Road, Cuffley, EN6 4RY

Tel: 01707 802001 Email: sales@greenhillestates.co.uk <https://www.greenhillestates.co.uk>