



28 La Rue Gallie

La Grande Route De St Martin



# 28 La Rue Gallie, La Grande Route De St Martin, St Saviour, JE2 7JF

Located in the popular parish of St Saviour in the heart of Maufant village, this beautifully presented link detached family home offers a perfect blend of space, style and practicality. This property is ideal for those seeking a comfortable and elegant residence in a peaceful yet convenient location.

Upon entering, you are greeted by a welcoming hallway that sets the tone for the immaculate décor found throughout the home. The ground floor boasts two generously sized reception rooms, perfectly designed to cater to modern family living. The lounge diner provides a bright and airy space, ideal for both relaxing evenings and entertaining guests. Adjacent to this is a separate playroom, offering a versatile area that can be used as a children`s play space, home office or additional sitting room.

The kitchen is fitted with contemporary units, ample work surfaces and integrated appliances. A guest WC on the ground floor adds convenience for both family and visitors.

Upstairs, the property features three spacious double bedrooms, each beautifully decorated and flooded with natural light. The family bathroom is well-appointed, offering a clean and modern space.

Additional benefits include a garage with utility area, providing excellent storage and laundry facilities, as well as off road parking for two cars. The exterior is equally impressive, a well-maintained patio garden that require minimal upkeep with direct gated access to the communal green.

This home has been lovingly maintained and is presented in immaculate condition throughout, ready for you to move in and enjoy. With its excellent location in St Saviour, close to local amenities, schools and transport links, this property represents a fantastic opportunity for families or professionals alike.

Early viewing is highly recommended to fully appreciate all that this exceptional home has to offer.



Parish: St Saviour

Qualification: Qualified

Tenure: Freehold

Price £805,000



- 3 Double bedrooms
- parking for 2 plus garage
- Immaculately decorated throughout
- 2 reception rooms
- low maintenance garden
- convenient location







Knight  
Frank



Knight  
Frank



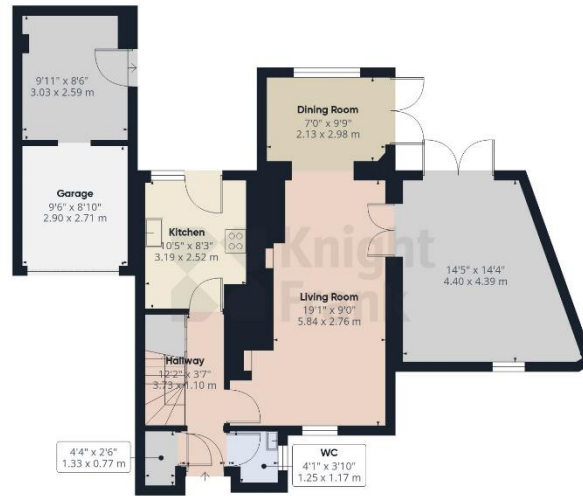




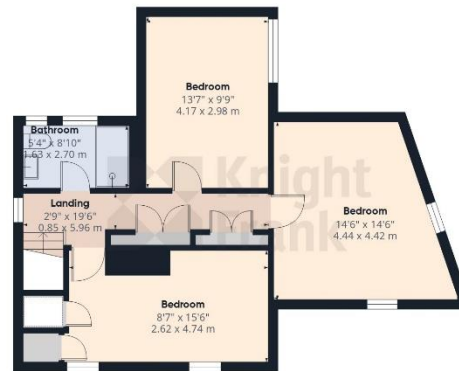








Ground Floor



Floor 1



Approximate total area<sup>(1)</sup>  
 1364 ft<sup>2</sup>  
 126.7 m<sup>2</sup>

(1) Excluding balconies and terraces

Calculations reference the RICS IPMS 3C standard. Measurements are approximate and not to scale. This floor plan is intended for illustration only.

GIRAFFE360

This plan is for layout guidance only. Not drawn to scale unless stated. Windows and door openings are approximate. Whilst every care is taken in the preparation of this plan, please check all dimensions, shapes and compass bearings before making any decisions reliant upon them.

## Services

All Mains

No Gas

Electric Heating

Double glazing

+441534 877977

Knight Frank Jersey

37-39 Halkett Place St Helier, Jersey JE2 4WG

[knightfrank.je](http://knightfrank.je)

Your partners in property

---

1. Particulars: These particulars are not an offer or contract, nor part of one. You should not rely on statements given by Knight Frank Jersey in the particulars, by word of mouth or in writing (“information”) as being factually accurate about the property, its condition or its value. Neither Knight Frank Jersey nor any joint agent has any authority to make any representations about the property, and accordingly any information given is entirely without responsibility on the part of Knight Frank Jersey. 2. Material Information: Please note that the material information is provided to Knight Frank Jersey by third parties and is provided here as a guide only. While Knight Frank Jersey has taken steps to verify this information, we advise you to confirm the details of any such material information prior to any offer being submitted. If we are informed of changes to this information by the seller or another third party, we will use reasonable endeavours to update this as soon as practical. 3. Photos, Videos etc: The photographs, property videos and virtual viewings etc. show only certain parts of the property as they appeared at the time they were taken. Areas, measurements and distances given are approximate only. 4. Regulations etc: Any reference to alterations to, or use of, any part of the property does not mean that any necessary planning, building regulations or other consent has been obtained. A buyer must find out by inspection or in other ways that these matters have been properly dealt with and that all information is correct. 5. Fixtures and fittings: A list of the fitted carpets, curtains, light fittings and other items fixed to the property which are included in the sale (or may be available by separate negotiation) will be provided by the Seller’s Lawyer. Particulars dated 16/06/2026. All information is correct at the time of going to print.

