

DIRECT



MOVES



Courlands Road

, Portland DT5 2HG

- Three Bedroom semi-detached family home
 - Weston, Portland location
- Enclosed garden with side access
- Shower room and seperate W/C
- Cash preferred due to condition
- School catchment area
- Driveway parking for multipul vehicles
- Excellent renovation opportunity
- 28 day exchange required

Asking Price £160,000 Freehold





Entrance Hallway

Front door access to property, leading to entrance hallway. Access to Kitchen, Sitting/Dining area & stairs ascending to first floor.

Sitting/Dining area

A generously proportioned Sitting/Dining area with both front and rear aspect windows & wall mounted radiator

Kitchen

Eye and base level units, space for white goods. Access to rear private enclosed garden,

First floor landing

Access to all rooms on the first floor

Shower room

Rear aspect window. walk in shower with detachable head & hand wash basin

W/C

Rear aspect window, Toilet

Bedroom one

Spacious double bedroom with rear aspect window and space for floor standing furniture



Bedroom two

Spacious double bedroom with front aspect window and space for floor standing furniture

Bedroom three

Spacious double bedroom with front aspect window and space for floor standing furniture

Corporate Sale

This property is a corporate sale, please ask us for a copy of "What to expect from a corporate Sale" document, some features found below:

28 day exchange required

Property sold as seen

limited maintenance documents available

Estate Charge of £20-£150 per year unless otherwise stated inc Freehold

Leasehold Service charges vary

Leaseholds may have additional Sinking Fund fee

Application for external works required

Leaseholds will be new 125 year lease on completion.

Disclaimer

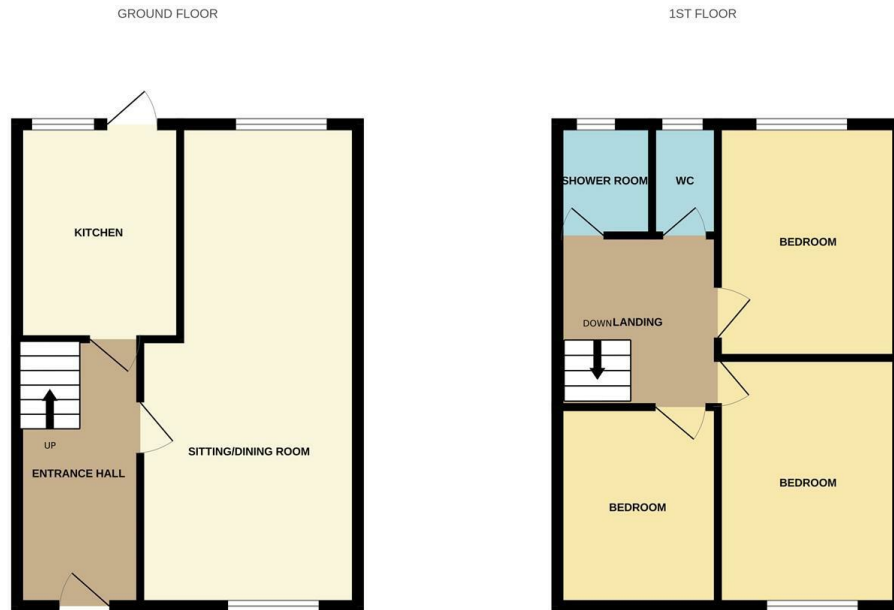
Direct Moves Estate Agents make no representations or warranties regarding the accuracy, completeness, or reliability of the property details provided. These details are for informational purposes only and should not be relied upon in any way, please note some images contain AI editing for presentation purposes only. The information is not intended to form part of any contract

and does not constitute an offer or guarantee by Direct Moves.

Should you wish to proceed with an offer on this property, we are obligated by HMRC to conduct mandatory Anti-Money Laundering Checks. We outsource these checks to our compliance partners at Coadjute and they charge a fee for this service.



Local Authority
Council Tax Band **B**
EPC Rating **C**



Whilst every attempt has been made to ensure the accuracy of the floorplan contained here, measurements of doors, windows, rooms and any other items are approximate and no responsibility is taken for any error, omission or mis-statement. This plan is for illustrative purposes only and should be used as such by any prospective purchaser. The services, systems and appliances shown have not been tested and no guarantee as to their operability or efficiency can be given.
Made with Metropix ©2026

Direct Moves Estate Agents Office

9 Westham Road
Dorset
Weymouth
DT4 8NP

Contact

01305 778500
sales@directmoves.com
<https://directmoves.com/>

Agents Note: Whilst every care has been taken to prepare these particulars, they are for guidance purposes only. All measurements are approximate and for general guidance purposes only and whilst every care has been taken to ensure accuracy, they should not be relied upon and potential buyers/tenants are advised to recheck the measurements.

