



Clements estate agents



## Jay Close, Hemel Hempstead, HP3 0GJ Offers In Excess Of £615,000

Situated in the sought after Aspen Park development is this spacious and well presented semi detached townhouse. Boasting four bedrooms, ensuite to bedroom one, modern fitted kitchen diner with integrated appliances, living room, cloakroom, gas central heating, double glazing, car port and off road parking.

Located within easy reach of both Apsley which is only a 12 minute walk away and Hemel Hempstead mainline stations with access to London Euston in only 30 minutes, local shops, restaurants and Two Waters Primary School, two parks on the development, Hemel Hempstead town centre and the M1, M25 and A41 road links.

Welcome to this charming semi-detached townhouse located in the desirable area of Jay Close, Aspen Park. This delightful property boasts a generous living space of 1,141 square feet, making it an ideal family home.

The modern fitted kitchen/diner is a standout feature, equipped with integrated appliances that make cooking and dining a pleasure with doors out onto the rear garden. This area is perfect for family meals or hosting friends. There is also the added benefit of a living room.

The townhouse comprises four well-proportioned bedrooms, with the master bedroom benefiting from an en suite, offering a private retreat for the homeowners. The additional bathroom and cloakroom ensure that there is plenty of space for family and guests alike.

Comfort is assured with gas central heating and double glazing throughout the property, providing warmth during the colder months. Outside, the property features a car port along with off-road parking, ensuring convenience for you and your visitors.

This townhouse is not only a lovely home but also offers a fantastic opportunity to enjoy the vibrant community of Hemel Hempstead. With its excellent local amenities, schools, and transport links, this property is perfect for those seeking a blend of comfort and convenience. Do not miss the chance to make this wonderful townhouse your new home.

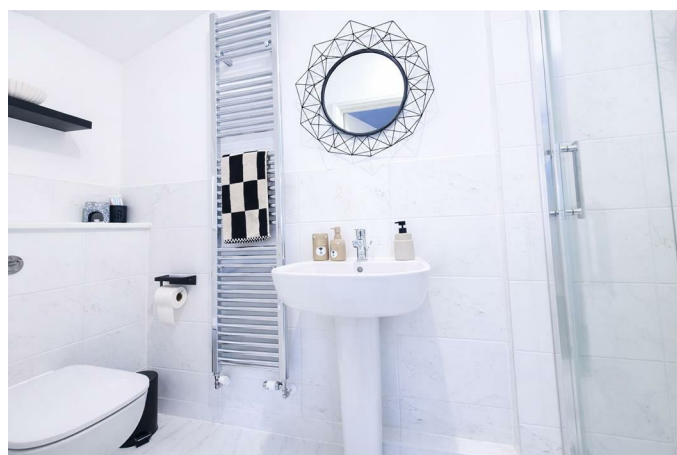
## Entrance Hall



## Bedroom One 20'6 x 11'0 (6.25m x 3.35m)



## En Suite



## Landing

**Modern Fitted Kitchen/Diner 14'5 x 12'0 (4.39m x 3.66m)**



**Landing**



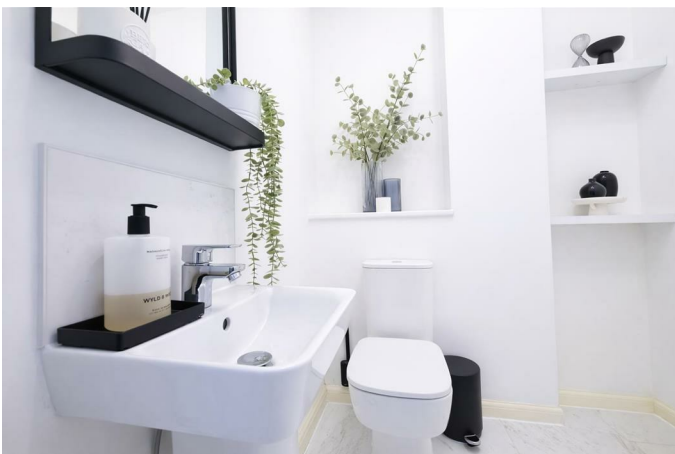
**Living Room 14'7 x 9'7 (4.45m x 2.92m)**



**Bedroom Three 14'5 max x 10'5 max (4.39m max x 3.18m max)**



**Cloakroom**



**Bedroom Four 14'5 max x 9'9 max (4.39m max x 2.97m max)**



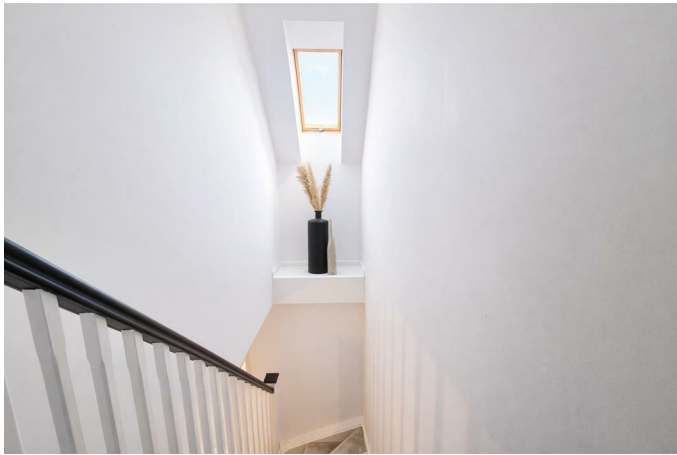
**Bathroom**



**Rear Garden**



**Landing**

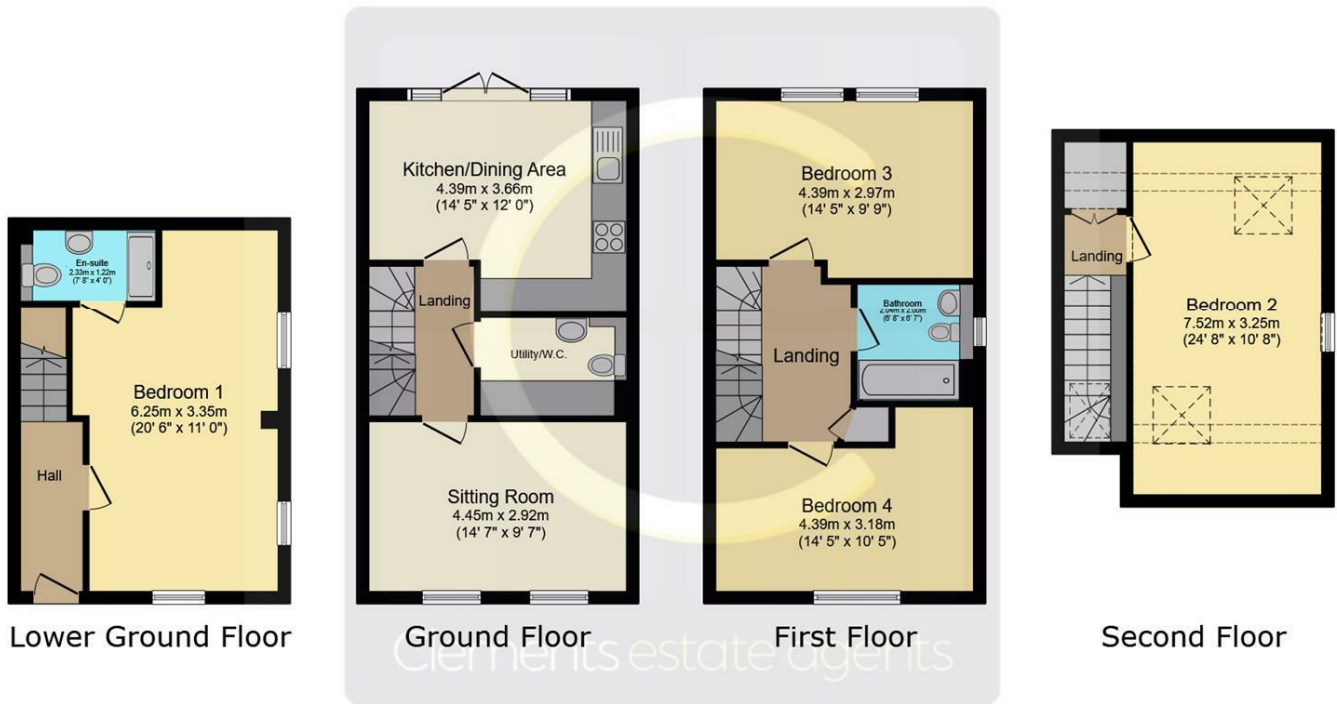


**Car Port & Off Road Parking**

**Bedroom Two 24'8 max x 10'8 max (7.52m max x 3.25m max)**

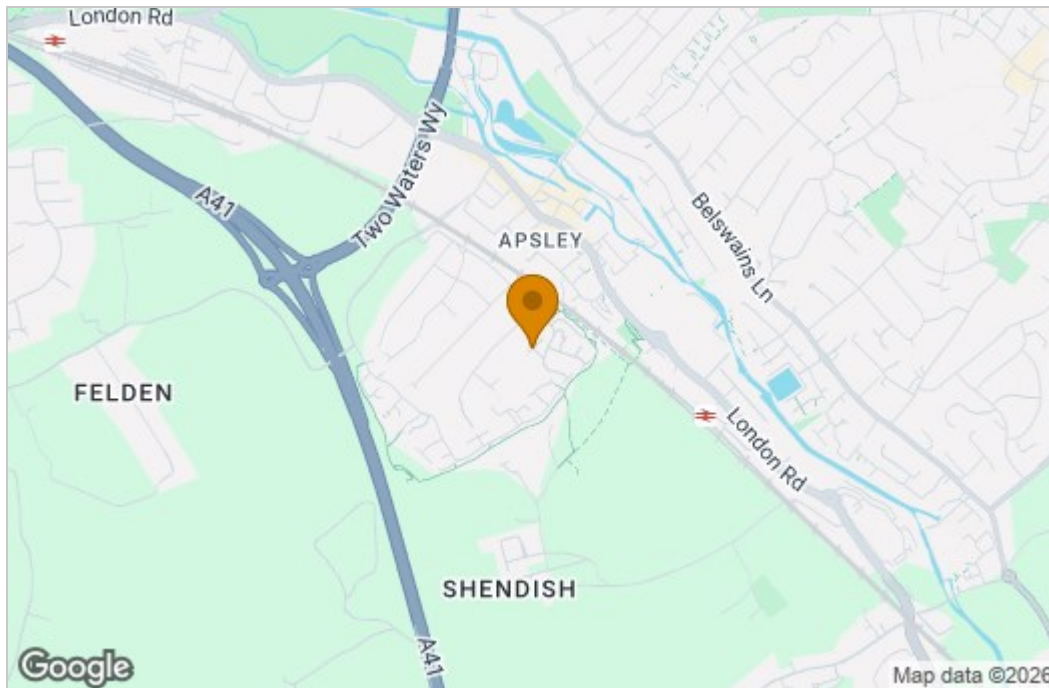


# Floor Plan

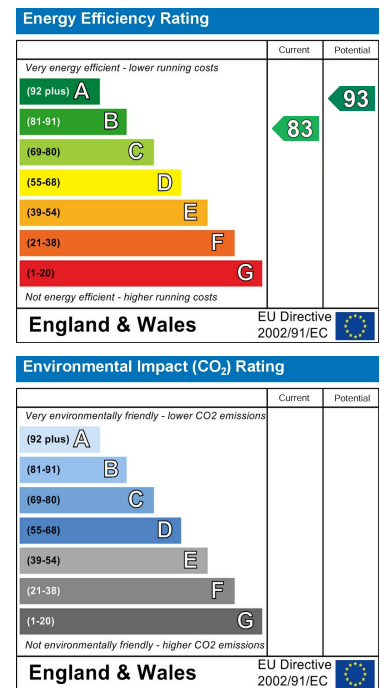


This floor plan is for illustrative purposes only. It is not drawn to scale. Any measurements, floor areas (including any total floor area), openings and orientations are approximate. No details are guaranteed, they cannot be relied upon for any purpose and do not form any part of any agreement. No liability is taken for any error, omission or misstatement. A party must rely upon its own inspection(s). Powered by www.Propertybox.io

# Area Map



# Energy Efficiency Graph



These particulars, whilst believed to be accurate are set out as a general outline only for guidance and do not constitute any part of an offer or contract. Intending purchasers should not rely on them as statements of representation of fact, but must satisfy themselves by inspection or otherwise as to their accuracy. No person in this firm's employment has the authority to make or give any representation or warranty in respect of the property.