

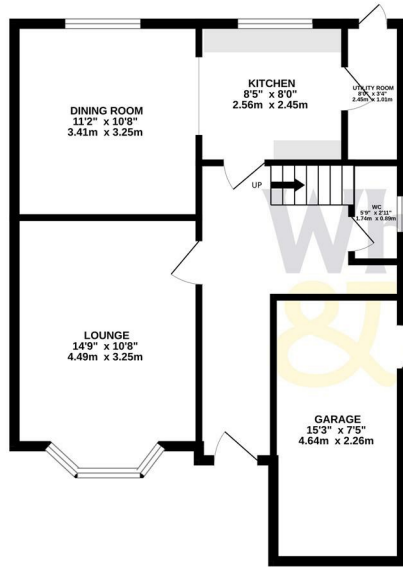


30 Tytherington Drive, Macclesfield, SK10 2HJ

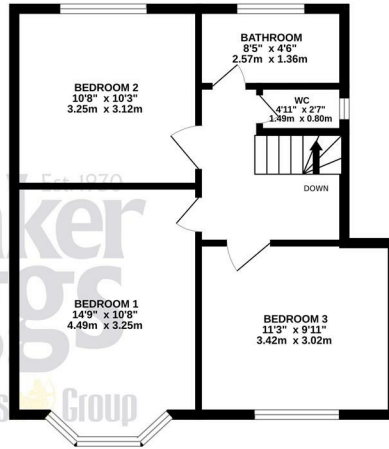
£380,000

- This spacious and beautifully maintained three double bedroom semi-detached home offers superb family living.
- To the first floor are three generous double bedrooms, all well-proportioned.
- This impressive property provides well-balanced and versatile accommodation throughout.
- Externally, the property benefits from a driveway providing off-road parking, a garage for additional storage, and a delightful enclosed rear garden with patio area.
- The fitted kitchen is complemented by a separate utility room and a convenient downstairs WC.

GROUND FLOOR
607 sq.ft. (56.4 sq.m.) approx.

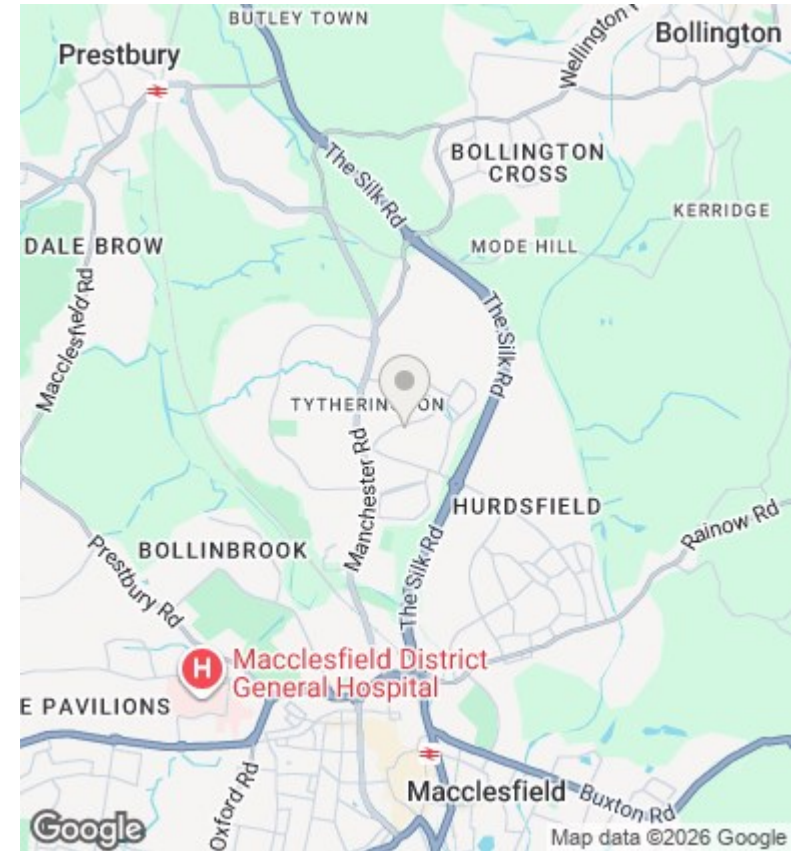


1ST FLOOR
483 sq.ft. (44.9 sq.m.) approx.



TOTAL FLOOR AREA : 1090 sq.ft. (101.2 sq.m.) approx.

Whilst every attempt has been made to ensure the accuracy of the floorplan contained here, measurements of doors, windows, rooms and any other items are approximate and no responsibility is taken for any error, omission or mis-statement. This plan is for illustrative purposes only and should be used as such by any prospective purchaser. The services, systems and appliances shown have not been tested and no guarantee as to their operability or efficiency can be given.
Made with Metropix ©2026



Directions

Viewings

Viewings by arrangement only. Call 01625 430044 to make an appointment.

Council Tax Band

D

EPC Rating:

D

Energy Efficiency Rating		
	Current	Potential
<i>Very energy efficient - lower running costs</i>		
(92 plus) A		
(81-91) B		
(69-80) C		77
(55-68) D	60	
(39-54) E		
(21-38) F		
(1-20) G		
<i>Not energy efficient - higher running costs</i>		
England & Wales	EU Directive 2002/91/EC	