



Beaumont Crescent, W14

£2,100 Per calendar month

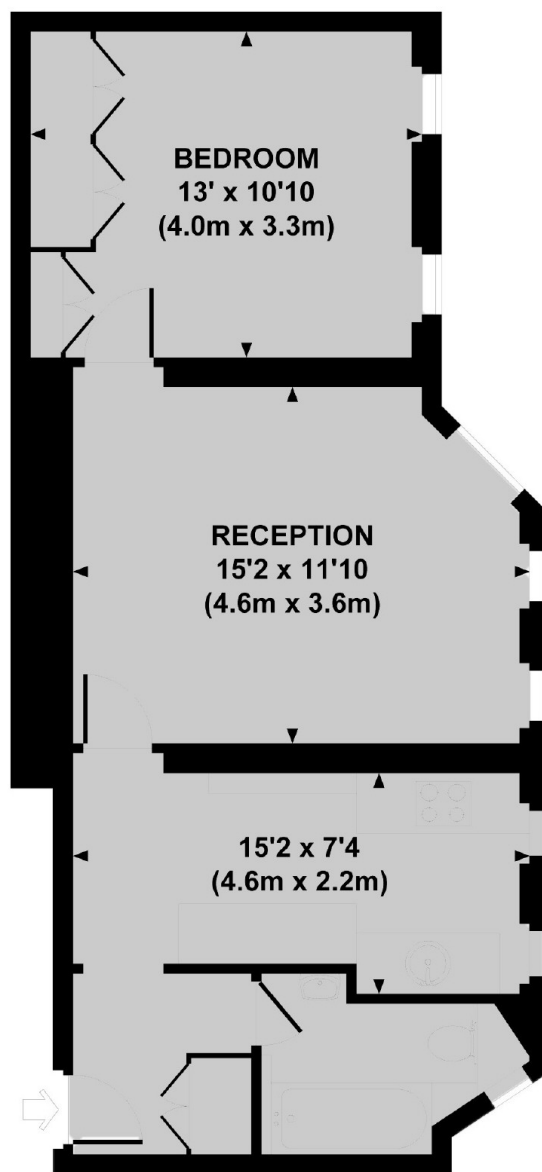
A fresh, one bedroom apartment, decorated to a neutral standard. The property has a excellent size reception room, a lovely modern eat in kitchen and large family bathroom.

West Kensington Mansions is located on Beaumont Crescent, off North End Road within 300 yards of West Kensington underground station, local shops and the A4 for easy access into and out of Central London.

Features

- Raised Ground Floor
- Eat In Kitchen
- High Ceiling
- Mansions Block
- Close To Tube
- Modern Finish

Beaumont Crescent, London, W14



RAISED GROUND FLOOR

WEST KENSINGTON MANSIONS, W14

Approx. gross internal area
523 Sq Ft. / 49 Sq M.