



Guide Price
£280,000

Freehold

3x  2x  2x 

**Harbour View Road,
Dover, Kent, CT17**

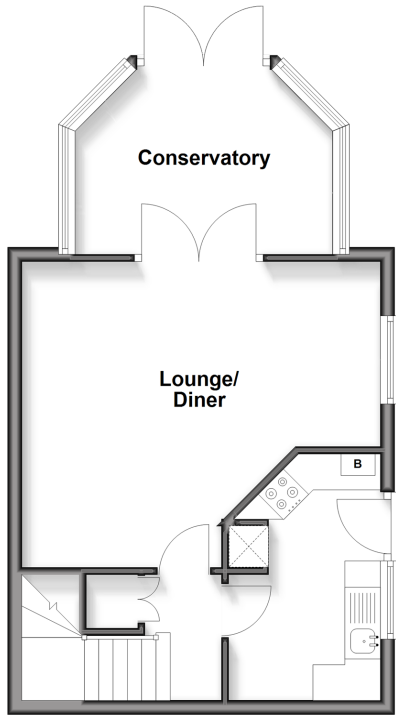
OVER 60?

Secure this property
for up to **59% less!**

Wards
Helping you move forwards

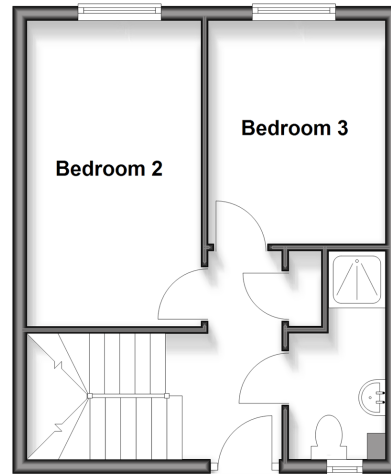
Lower Ground Floor

Approx. 39.9 sq. metres (429.4 sq. feet)



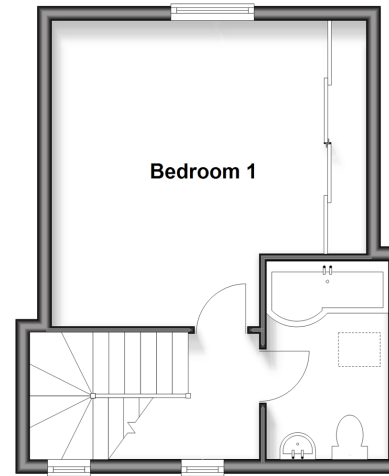
Upper Ground Floor

Approx. 30.9 sq. metres (332.8 sq. feet)



First Floor

Approx. 28.6 sq. metres (307.3 sq. feet)



Accommodation

UPPER GROUND FLOOR

Entrance Hallway
Bedroom 2 : 13'11 x 7'11 (4.24m x 2.41m)
Bedroom 3 : 10'2 x 8'2 (3.10m x 2.49m)
Shower Room

LOWER GROUND FLOOR

Hallway
Kitchen : 11'2 x 7'0 (3.41m x 2.14m)
Lounge/Diner : 16'6 x 13'11 (5.03m x 4.24m)
Conservatory To The Rear : 11'10 x 8'7 (3.61m x 2.62m)

FIRST FLOOR

Landing
Bathroom
Bedroom 1 : 13'11 x 10'4 (4.24m x 3.15m)

OUTSIDE

Front Garden
Plenty Of Off Road Parking
Rear Garden
Sheds
Workshop/Outbuilding



Main features

- Beautiful Family home
- Arranged over 3 floors
- Off street parking for 3 cars
- Close to Dover Priory railway station with its fast link to London, ideal if you need to commute
- Excellent transport links via A20/M20, M2/A2 as well as Dover Port

Nearest Schools

Primary Schools: Priory Fields School 0.4 miles, Vale View Community School 0.8 miles, St Martin's School 0.9 miles
 Secondary Schools: Dover Grammar School for Boys 0.6 miles, Astor College for the Arts 1.0 miles, Dover Grammar School for Girls 1.2 miles

Transport Information

Train Stations: Dover Priory 1.4 miles, Kearsney 2.8 miles, Martin Mill 6.1 miles

Address

Harbour View Road, Dover, Kent, CT17

Directions

For directions to this property please contact us.



Wards
Helping you move forwards

Call Dover Branch 01304 214876 ■ wardsofkent.co.uk



■ If buying to rent, please check if Local Authority licensing schemes apply before proceeding

■ Through a Homewise Home For Life Plan people aged 60+ can secure this property for up to 59% less, by purchasing a Lifetime Lease



10736466/20260518/SB/CDH