



Weston Street, SE1

£700,000

A highly desirable third-floor apartment featuring a spacious open-plan living and kitchen area, complete with a breakfast bar and direct access to a large private balcony. The property offers two well-proportioned double bedrooms, including a principal bedroom with en-suite bathroom and a stylish family bathroom. Bright, modern, and thoughtfully designed throughout.

Tangerine House is ideally situated in the heart of SE1, moments from London Bridge Station and Borough Station. Nearby you'll also find Bermondsey Street, Borough Market and the South Bank. A fantastic range of amenities, restaurants and cultural attractions are right on your doorstep.

Features

- Third Floor Flat
- Open Plan Living
- Two Double Bedrooms
- Two Bathrooms
- Private Balcony
- Attractive Views



Weston Street, SE1

Positioned on the third floor, this appealing apartment features a bright and spacious open-plan living area, where the lounge and kitchen flow together seamlessly to create a contemporary, well-balanced layout.

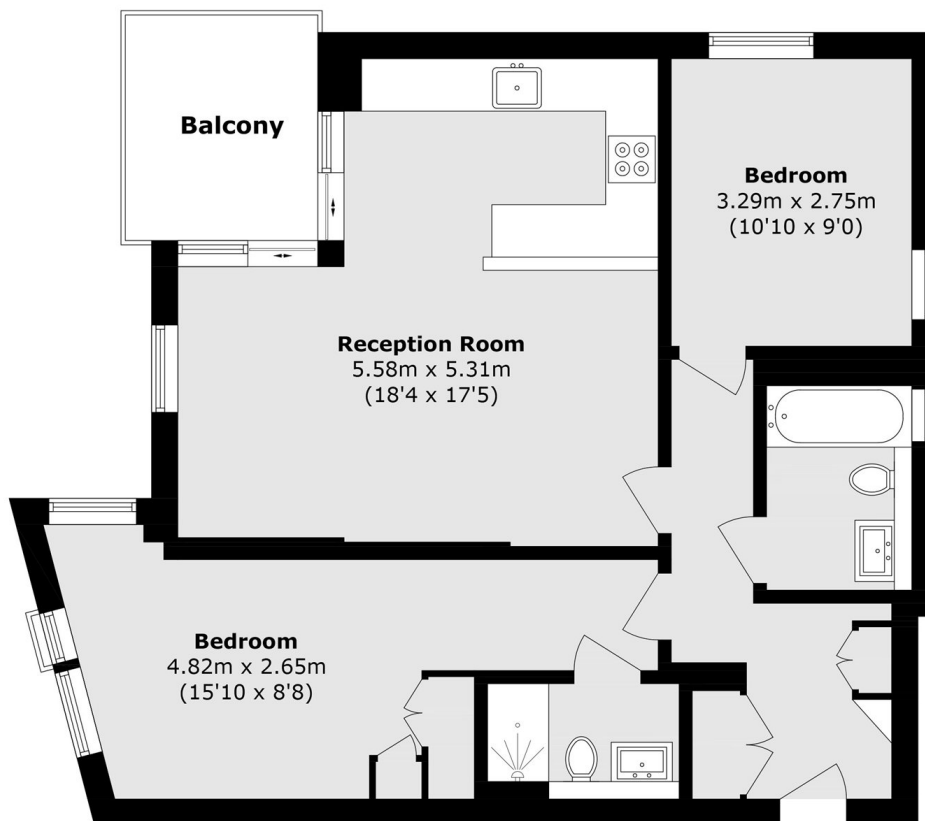
Hardwood flooring runs throughout the main living space, enhancing the modern feel, while there is also ample room to accommodate a dining area alongside a practical breakfast bar. The living space opens directly onto a generous private balcony, offering an inviting outdoor extension of the home. This provides an excellent setting for relaxing, dining, or entertaining in the warmer months.

The property includes two well-proportioned double bedrooms, both designed with comfort and functionality in mind. The principal bedroom benefits from its own en-suite bathroom, providing added privacy and everyday convenience.

Further features include a second guest bathroom, secure entry system, and lift access. Overall, the apartment and the development as a whole is finished to a high standard, combining light, space, and modern practicality throughout.



Weston Street,
London, SE1



Third Floor

Total area (approx.): 69.4 sq. m (747.0 sq. ft)

Balcony area (approx.): 5.6 sq m (60.2 sq. ft)