



10 Palmer Road London

£950 Per Week

A two-bedroom apartment situated just a short walk from Battersea Park. Featuring underfloor heating With comfort cooling, this beautifully finished apartment has been elegantly designed to maximise light and space.

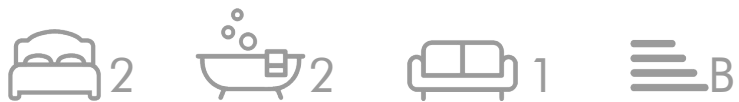
Centrally located, the property resides steps away from Battersea Park and close to the shops and bars of Chelsea, with excellent transport links including Battersea Park Station and Vauxhall underground. Residents will also enjoy the wonderful on-site amenities, including the swimming pool, spa, rooftop garden and 24-hour concierge.

Council Tax Band: Wandsworth - E
Change of contract fee: £50 including VAT
Lift access | Cladding: EWS1 Certificate available
Holding Deposit - £950 (1 week's rent, subject to agreed offer)

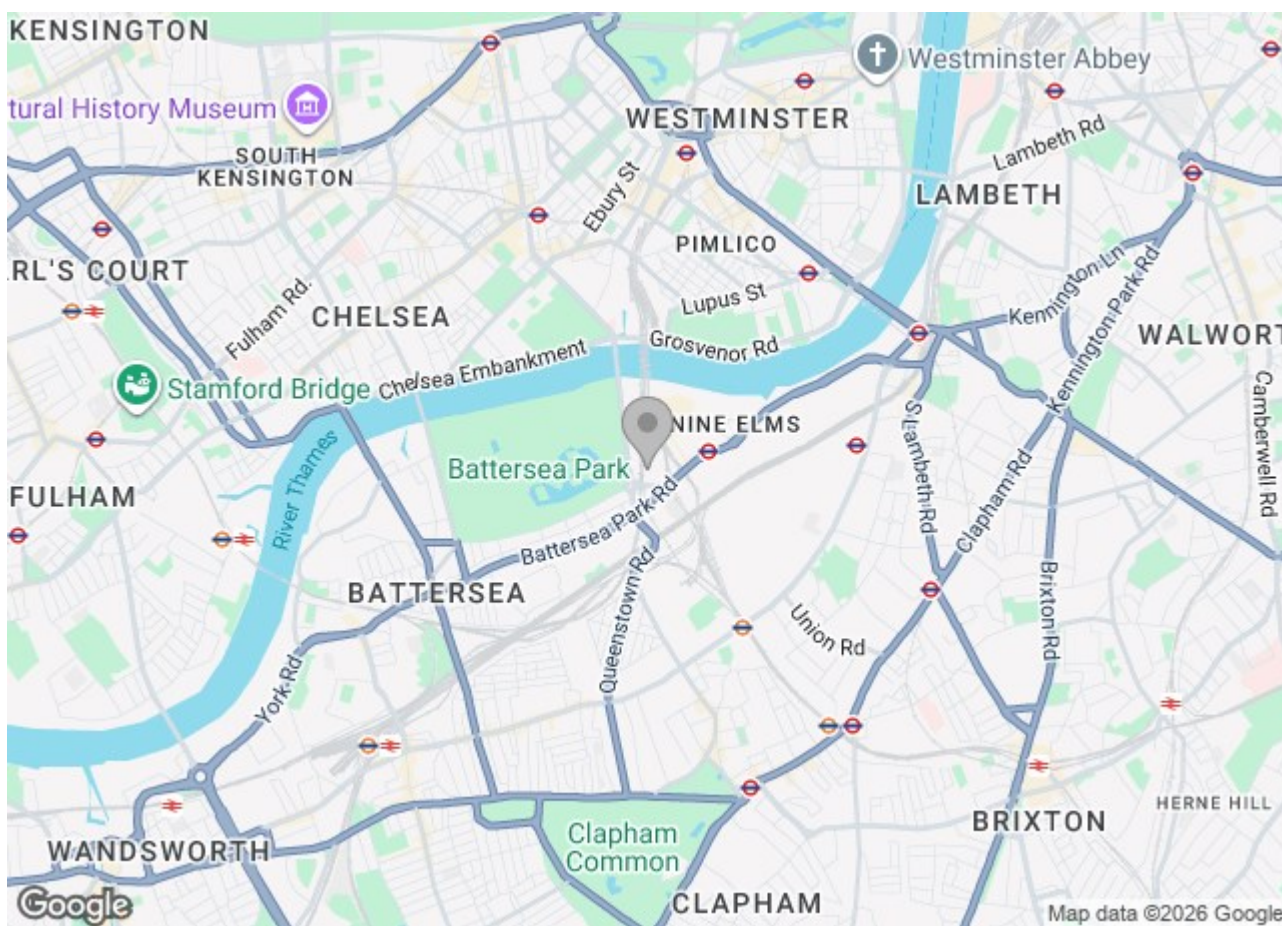
Electricity supply – Mains | Cold Water supply – Mains | Sewerage – Mains | Heating & comfort cooling – Communal | Internet: Fttp

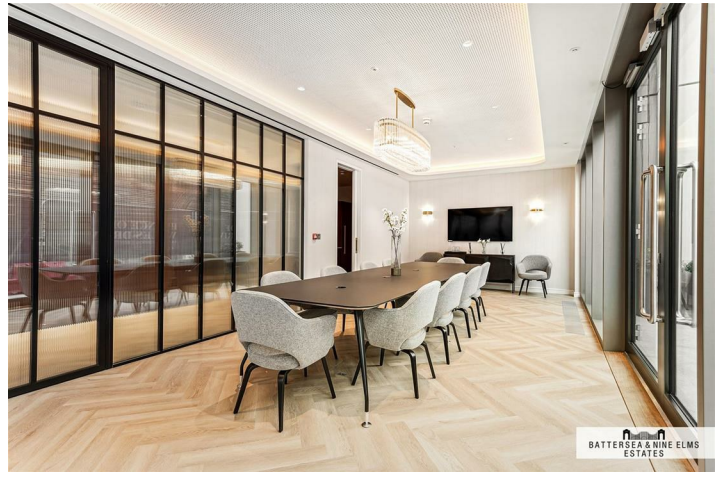
To check broadband and mobile phone coverage, please visit Ofcom.

10 Palmer Road London



- Two double bedrooms
- Two bathrooms (one en suite)
- 24 Hour concierge
- Moments to Battersea Park and Battersea Power Station
- Residents swimming pool & spa
- Comfort cooling and underfloor heating
- Private balcony
- Residents' rooftop garden





Radley House,
 Prince of Wales Drive, SW11
 Approximate Gross Internal Area
 71.15 sq m / 766 sq ft

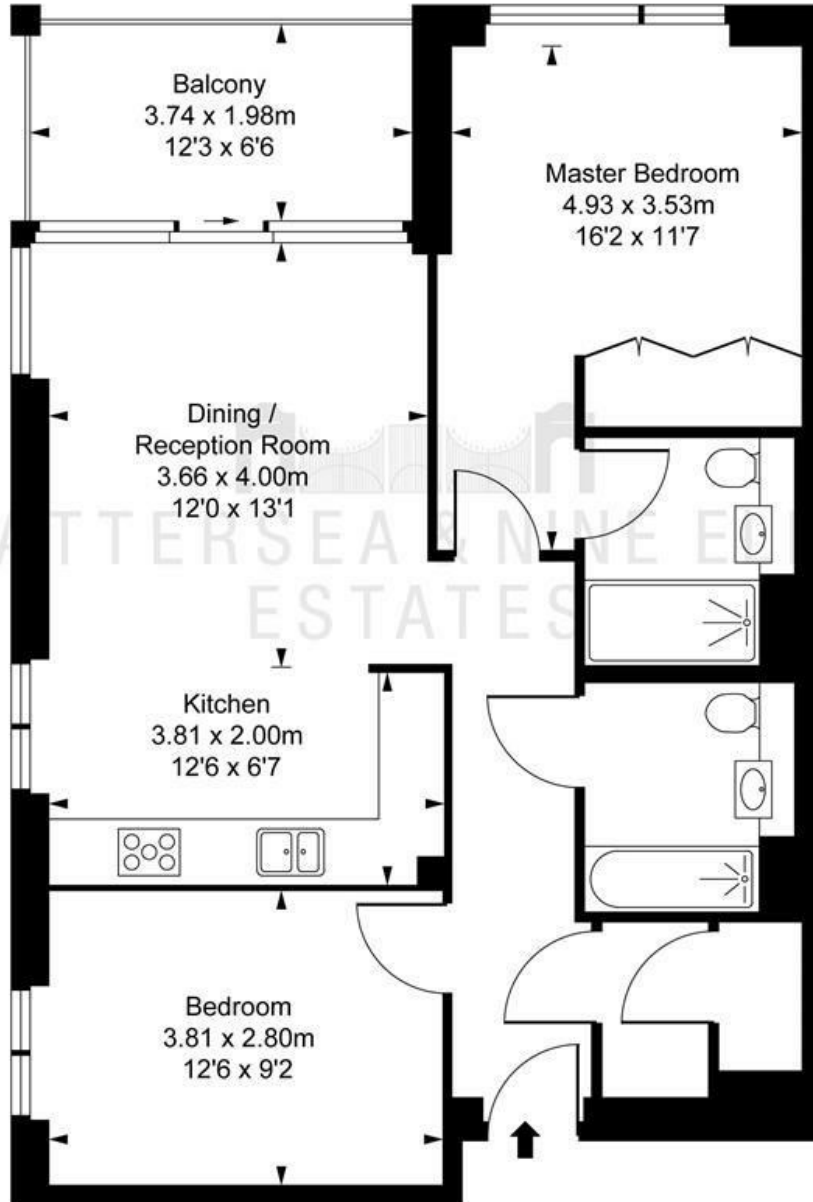


ILLUSTRATION FOR IDENTIFICATION PURPOSES ONLY
 ALL MEASUREMENTS AND AREA FIGURES SUPPLIED BY OTHERS. ACCURACY IS NOT GUARANTEED.
 THIS PLAN MUST NOT BE REPRODUCED BY ANY OTHER PERSON WITHOUT PERMISSION

These particulars, whilst believed to be accurate are set out as a general outline only for guidance and do not constitute any part of an offer or contract. Intending purchasers should not rely on them as statements of representation of fact, but must satisfy themselves by inspection or otherwise as to their accuracy. No person in this firm's employment has the authority to make or give any representation or warranty in respect of the property.

