

Three bedroom semi-detached • Lounge with log burner • Kitchen/diner • Utility • Fully boarded loft space • Driveway parking • Attractive garden to the rear • Walking distance to Oxton Village



15 Silverdale Road, Prenton
£325,000 Freehold





A beautiful extended three bedroom semi-detached home, ideally positioned in the heart of Oxton and perfectly suited to modern family living.

Council Tax band: B

Tenure: Freehold

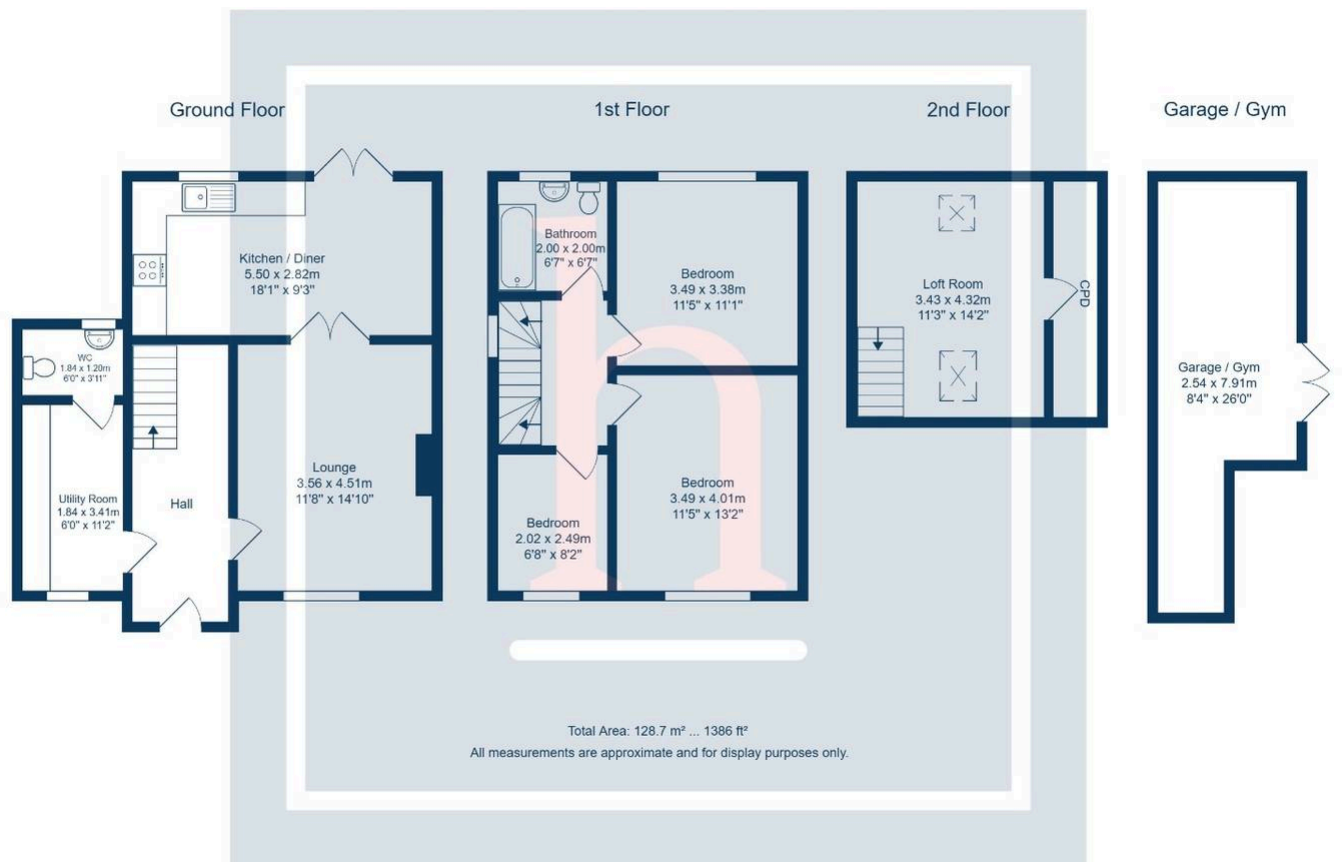
EPC Energy Efficiency Rating: E

EPC Environmental Impact Rating: E









You can include any text here. The text can be modified upon generating your brochure.