



Susan Constant Court

14 Newport Avenue, E14

Asking Price £315,000

A lovely 1 Bedroom Apartment in the heart of Canary Wharf, offering contemporary living with excellent access to local amenities and transport links.

CHESTERTONS



Susan Constant Court

14 Newport Avenue, E14

- 1 Bedroom | 1 Bathroom
- Integrated Kitchen Appliances
- Spacious Balcony
- 525 sq. ft of Internal Living Space
- Concierge available
- Secure Allocated Underground Parking included



Situated in a well-maintained development in the heart of Canary Wharf, this stylish apartment offers contemporary living with excellent access to local amenities and transport links. The property benefits from wooden flooring throughout, creating a warm and cohesive feel across the living spaces.

The bright and spacious reception area opens onto a private balcony, providing the perfect spot to relax or entertain. The modern kitchen is fitted with integrated appliances, offering both practicality and a sleek finish.

Residents are ideally positioned within easy reach of a wide selection of shops, restaurants, and cafés at Canary Wharf Shopping Centre, as well as riverside walks along the River Thames.

Transport connections are excellent, with nearby stations including Canary Wharf Underground Station, Canary Wharf DLR Station, and Crossrail Canary Wharf Station, providing swift access to the city, West End, and beyond.

Tenure: Leasehold 971 years approx. remaining.

Service Charge: £2,160 pa approx.

Ground Rent: £342 pa.

Local Authority: Tower Hamlets

Council Tax Band: C

Score	Energy rating	Current	Potential
92+	A		
81-91	B		
69-80	C	79 C	80 C
55-68	D		
39-54	E		
21-38	F		
1-20	G		

Chestertons Canary Wharf & Greenwich Sales

Harbour Island

28 Harbour Exchange Square

London

E14 9GE

canarywharf@chestertons.co.uk

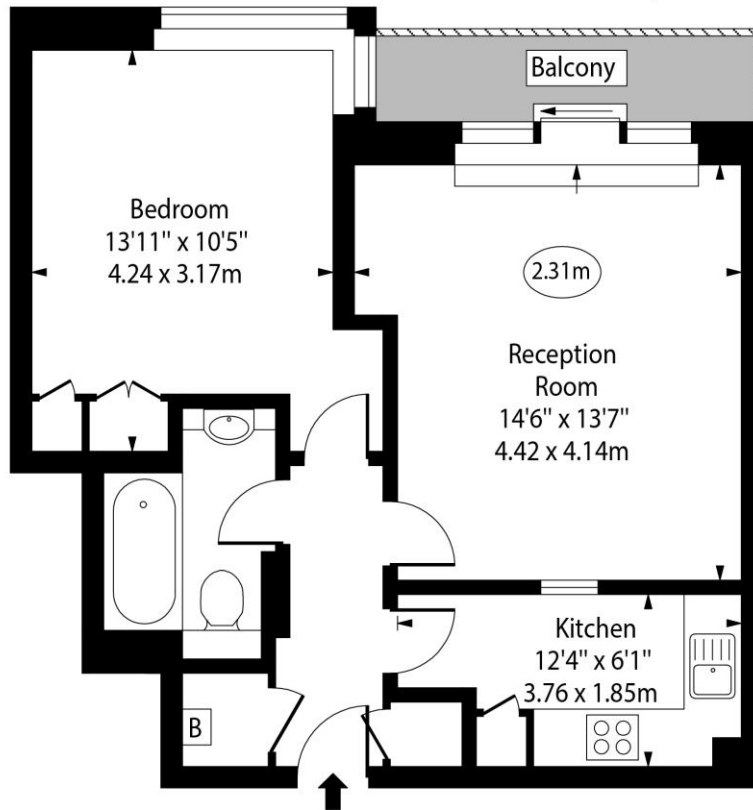
020 7510 8300

chestertons.co.uk

Susan Constant Court,
Newport Avenue, E14



○ - Ceiling Height



Fourth Floor

Approx Gross Internal Area 525 Sq Ft - 48.77 Sq M

Every attempt has been made to ensure the accuracy of the floor plan shown. However, all measurements, fixtures, fittings, and data shown are approximate interpretations and for illustrative purposes only. Measured according to the RICS. Not To Scale.

www.goldlens.co.uk

Ref. No. 030975K