

# WILKINSON

SALES • LETTINGS • MANAGEMENT

£325,000

Devonshire Place, Tewkesbury, GL20



 4

Bedrooms

 1

Bathroom

101 High Street, Tewkesbury, Gloucestershire, GL20 5JZ |  
Info@wilkinsonsIm.co.uk

01684 367736



- Semi Detached Corner Plot Home
- Front To Back Lounge
- Dining Room
- Kitchen & Utility Room
- Downstairs WC
- Four Double Bedrooms & Family Bathroom
- UPVC Double Glazing
- Gas Central Heating
- Garage
- Off Road Parking
- Front, Side & Rear Gardens
- NO ONWARD CHAIN

**\*NO ONWARD CHAIN\*** A well-presented four bedroom semi-detached family home occupying a generous corner plot, offering spacious and versatile accommodation throughout. Benefiting from owned solar panels, off road parking, detached garage and attractive gardens to the front, side and rear, this property is ideal for growing families. The accommodation briefly comprises an entrance porch leading into a welcoming entrance hall, a spacious front to back lounge featuring a charming log burner, separate dining room, fitted kitchen with built in electric oven and gas hob and spaces for a dishwasher and fridge freezer. There is also a utility room and convenient downstairs WC. To the first floor are four well-proportioned double bedrooms and a family bathroom with all four bedrooms having the added bonus of built in wardrobes. Further benefits include UPVC double glazing and gas central heating throughout. Externally, the property enjoys a substantial corner plot with well-maintained gardens to the front, side and rear, providing excellent outdoor space for entertaining, children or gardening enthusiasts. A detached garage and off road parking complete this fantastic home. Early viewing is highly recommended to fully appreciate the space, position and features this property has to offer.

**Lounge** 20' 11" x 11' 11" (6.38m x 3.63m)

**Dining Room** 11' 11" x 9' 11" (3.63m x 3.02m)

**Kitchen** 14' 1" x 10' 7" (4.29m x 3.23m) *maximum measurements*

**Utility Room** 8' 11" x 8' 1" (2.72m x 2.46m) *maximum measurements*

**Bedroom One** 13' 11" x 8' 10" (4.24m x 2.69m) *maximum measurements*

**Bedroom Two** 11' 11" x 9' 2" (3.63m x 2.79m) *maximum measurements*

**Bedroom Three** 10' 6" x 9' 5" (3.20m x 2.87m)

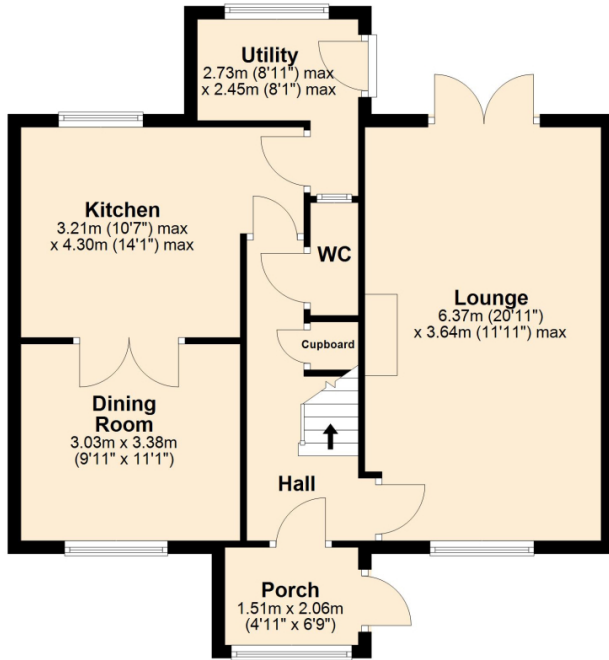
**Bedroom Four** 11' 5" x 8' 8" (3.48m x 2.64m)

**Bathroom** 7' 11" x 5' 5" (2.41m x 1.65m)

**Detached Garage** 17' 10" x 9' 10" (5.44m x 3.00m)

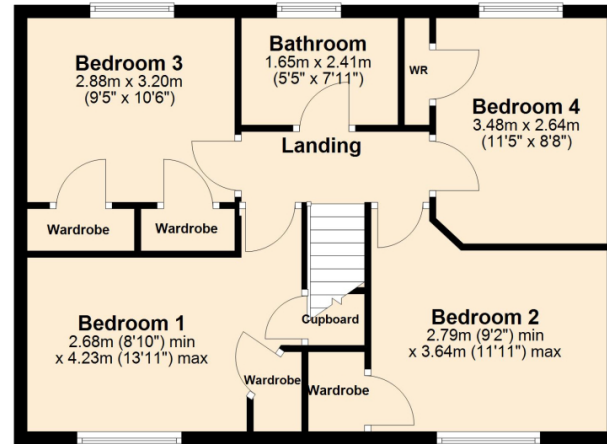
### Ground Floor

Approx. 64.4 sq. metres (693.0 sq. feet)



### First Floor

Approx. 56.9 sq. metres (613.0 sq. feet)



Total area: approx. 121.3 sq. metres (1305.9 sq. feet)

