



**The Corner House, Holgate Road, North Walsham, NR28 9LP**

**welcome to**

**The Corner House Holgate Road, North Walsham**

This three bedroom semi-detached house in the hamlet of White Horse Common would make an ideal family home set within 2 miles of North Walsham town centre.



Set within the hamlet of White Horse Common, within 2 miles of North Walsham town centre, this immaculately presented and lovingly maintained semi-detached house would make an ideal family home or investment opportunity. The property offers accommodation comprising entrance porch, entrance hall, kitchen/ diner and lounge on the ground floor. The first floor boasts three bedrooms and a family bathroom with utility space. Externally, the property has two allocated parking spaces in a shared driveway and a rear courtyard garden with garden shed and bordering flower beds.

### Entrance Porch

Double glazed door to the front aspect, storage cupboard and Karndean flooring.

### Entrance Hall

Stairs to the first floor, double glazed door into the porch, radiator and Karndean flooring.

### Kitchen/ Diner

Fitted kitchen with a range of wall and base units with work surfaces over, ceramic sink drainer, plumbing for dishwasher, electric cooker point, cooker hood, space for fridge freezer, oil central heating boiler, tiled splashback, radiator, television point, herringbone effect laminate flooring, two double glazed windows to the side aspect and a double glazed door to the side aspect, into the courtyard garden.

### Lounge

Double glazed window to the front and side aspects, brick fireplace with open fire, wall lights, television point, radiator and carpeted flooring.

### First Floor Landing

Skylight window to the front aspect, airing cupboard housing hot water tank, eaves storage cupboard, radiator and Karndean flooring.

### Bedroom One

Double glazed windows to the side and rear aspects, fitted wardrobe, access into loft space, television point, radiator and carpeted flooring.

### Bedroom Two

Double glazed window to the front aspect, radiator and carpeted flooring.

### Bedroom Three

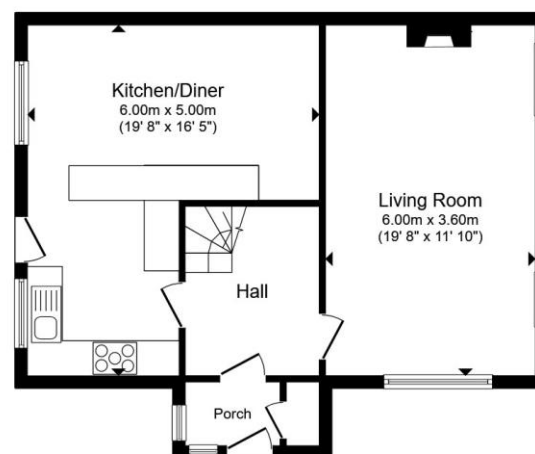
Double glazed window to the front and side aspects, decorative panelling, radiator and carpeted flooring.

### Family Bathroom

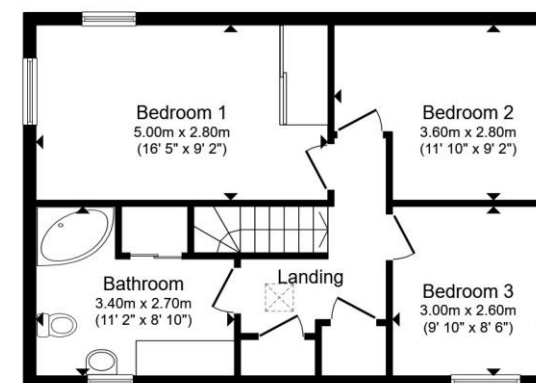
Suite comprising shower cubicle, corner bath with mixer tap, WC, wash hand basin with vanity unit, plumbing for washind machine, space for tumble dryer, heated towel rail, fully tiled walls, tiled flooring and a double glazed window to the front aspect.

### Exterior

Parking for the property is located on a shared driveway, shared with two other properties, you have two allocated spaces. The front of the property has steps/ pathway to the front door and lawn area with trees and shrubs. The rear courtyard garden is fully enclosed and has a side gate allowing access to driveway, it is laid with patio, with bordering flower beds, plenty of plants including eucalyptus and jasmine, garden shed and oil tank.



**Ground Floor**



**First Floor**

Total floor area 107.1 m<sup>2</sup> (1,153 sq.ft.) approx

This floor plan is for illustrative purposes only. It is not drawn to scale. Any measurements, floor areas (including any total floor area), openings and orientation are approximate. No details are guaranteed, they cannot be relied upon for any purpose and they do not form part of any agreement. No liability is taken for any error, omission or misstatement. A party must rely upon its own inspection(s). Powered by [www.propertybox.io](http://www.propertybox.io)

  
william  
h brown



**view this property online** [williamhbrown.co.uk/Property/NWM109951](http://williamhbrown.co.uk/Property/NWM109951)



**welcome to**

## **The Corner House Holgate Road, North Walsham**

- Modern Family Home
- Semi-Rural Location
- Kitchen/ Diner
- Three Bedrooms
- Two Parking Spaces
- Less Than 2 Miles from Town Centre
- Vendor Has Found!

Tenure: Freehold EPC Rating: Awaited  
Council Tax Band: C

offers over

**£325,000**



Please note the marker reflects the  
postcode not the actual property

**view this property online** [williamhbrown.co.uk/Property/NWM109951](http://williamhbrown.co.uk/Property/NWM109951)



Property Ref:  
NWM109951 - 0002

1. MONEY LAUNDERING REGULATIONS Intending purchasers will be asked to produce identification documentation at a later stage and we would ask for your co-operation in order that there is no delay in agreeing the sale. 2. These particulars do not constitute part or all of an offer or contract. 3. The measurements indicated are supplied for guidance only and as such must be considered incorrect. Potential buyers are advised to recheck measurements before committing to any expense. 4. We have not tested any apparatus, equipment, fixtures or services and it is in the buyers interest to check the working condition of any appliances. 5. Where an EPC, or a Home Report (Scotland only) is held for this property, it is available for inspection at the branch by appointment. If you require a printed version of a Home Report, you will need to pay a reasonable production charge reflecting printing and other costs. 6. We are not able to offer an opinion either written or verbal on the content of these reports and this must be obtained from your legal representative. 7. Whilst we take care in preparing these reports, a buyer should ensure that his/her legal representative confirms as soon as possible all matters relating to title including the extent and boundaries of the property and other important matters before exchange of contracts.

William H Brown is a trading name of Sequence (UK) Limited which is registered in England and Wales under company number 4268443, Registered Office is Cumbria House, 16-20 Hockliffe Street, Leighton Buzzard, Bedfordshire, LU7 1GN. VAT Registration Number is 500 2481 05.



**william h brown**



**01692 402861**



[NorthWalsham@williamhbrown.co.uk](mailto:NorthWalsham@williamhbrown.co.uk)



16 Market Street, NORTH WALSHAM, Norfolk,  
NR28 9BZ



**[williamhbrown.co.uk](http://williamhbrown.co.uk)**