



Chestnut Road, SE27 | £525,000

02087028111

dulwichvillage@pedderproperty.com

pedder
We live local



In General

- A lovely ground floor maisonette with private garden
- Upgraded and modernised to a high standard
- Two bedrooms
- One reception room
- Integrated kitchen
- Modern bathroom
- A most delightful private rear garden measuring 42'
- Beautifully presented throughout
- Central location close to transport links and amenities

In Detail

A lovely ground floor maisonette with private garden located on this popular tree-line residential road on the border of West Dulwich and West Norwood.

The property has been upgraded and modernised by the current owner to a high standard creating a beautifully presented interior. The accommodation comprises of two bedrooms, one reception room, integrated kitchen and modern bathroom. Externally to the rear there is a most delightful private garden measuring approximately 42'.

Chestnut Road is well located for access to both West Norwood and West Dulwich with their variety of independent shops, cafes and restaurants. The property is within walking distance to the areas beautiful green spaces including Dulwich Park, Brockwell Park, Dulwich & Sydenham Woods and Belair Park. Excellent transport links provide fast and frequent connections to central London with West Dulwich (Victoria/Blackfriars), Tulse Hill (London Bridge/Blackfriars/St Pancras) and West Norwood (London Bridge/Victoria/Clapham Junction) stations all within easy walking distance. Bus services to central London run along nearby Croxted Road.

Internal viewing of this fine property is advised.

EPC: D | Council Tax Band: C | Lease: 937 years remaining | SC: NIL | GR: NIL | BI: £350 pa

1

2

3

4

5

6

7

8

9

10

11

12

13

14

15

16

17

18

19

20

21

22

23

24

25

26

27

28

29

30

31

32

33

34

35

36

37

38

39

40

41

42

43

44

45

46

47

48

49

50

51

52

53

54

55

56

57

58

59

60

61

62

63

64

65

66

67

68

69

70

71

72

73

74

75

76

77

78

79

80

81

82

83

84

85

86

87

88

89

90

91

92

93

94

95

96

97

98

99

100

101

102

103

104

105

106

107

108

109

110

111

112

113

114

115

116

117

118

119

120

121

122

123

124

125

126

127

128

129

130

131

132

133

134

135

136

137

138

139

140

141

142

143

144

145

146

147

148

149

150

151

152

153

154

155

156

157

158

159

160

161

162

163

164

165

166

167

168

169

170

171

172

173

174

175

176

177

178

179

180

181

182

183

184

185

186

187

188

189

190

191

192

193

194

195

196

197

198

199

200

201

202

203

204

205

206

207

208

209

210

211

212

213

214

215

216

217

218

219

220

221

222

223

224

225

226

227

228

229

230

231

232

233

234

235

236

237

238

239

240

241

242

243

244

245

246

247

248

249

250

251

252

253

254

255

256

257

258

259

260

261

262

263

264

265

266

267

268

269

270

271

272

273

274

275

276

277

278

279

280

281

282

283

284

285

286

287

288

289

290

291

292

293

294

295

296

297

298

299

300

301

302

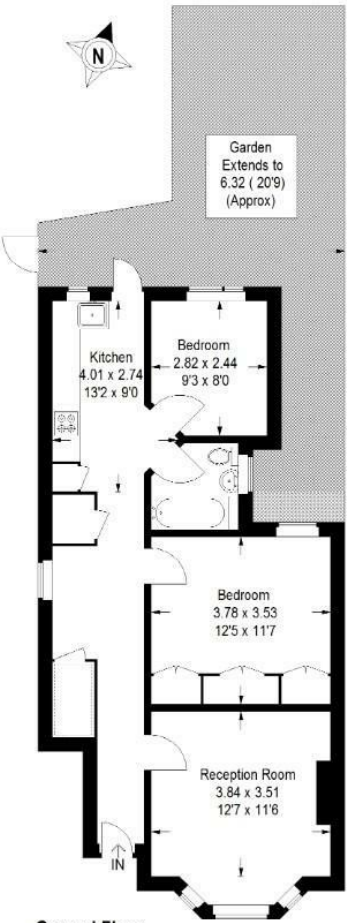
303

304

Floorplan

Chestnut Road, SE27

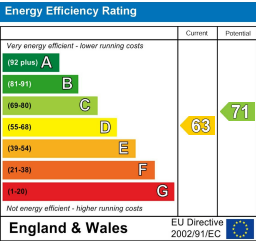
Approximate Gross Internal Area
61.8 sq m / 666 sq ft



Ground Floor

— = Reduced headroom below 1.5 m / 5'0"

Copyright www.pedderproperty.com © 2025
These plans are for representation purposes only
as defined by RICS - Code of Measuring Practice.
Not drawn to Scale. Windows and door openings
are approximate. Please check all dimensions,
shapes and compass bearings before making
any decisions reliant upon them.



Pedder Property Ltd trading as Pedder for themselves and for the vendor/landlord of this property whose agents they are, give notice that (1) these particulars do not constitute any part of an offer or contract, (2) all statements contained within these particulars are made without responsibility on the part of Pedder or the vendor/landlord, (3) whilst made in good faith, none of the statements contained within these particulars are to be relied upon as a statement of representation or fact, (4) any intending purchaser/tenant must satisfy him/herself by inspection or otherwise as to the correctness of each of the statements contained within these particulars, (5) the vendor/landlord does not make or give either Pedder or any person in their employment any authority to make or give representation or warranty whatsoever in relation to this property.