



Sherwood Avenue, Larkfield, Aylesford, ME20 7GJ
Offers In Excess Of £215,000



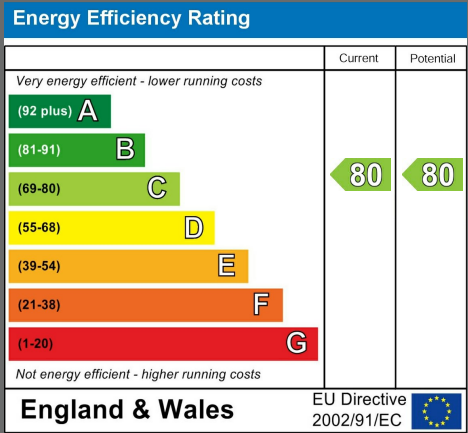
Nestled on Sherwood Avenue in the popular area of Larkfield, Aylesford, this well-presented ground floor apartment offers a fantastic blend of modern living and convenience. The property comprises two well-proportioned bedrooms and two bathrooms, making it ideal for individuals, couples, or small families.

The apartment features a generous reception room with a welcoming atmosphere, complemented by contemporary updates throughout and a low-maintenance layout for easy living. An allocated carport provides secure and convenient parking for residents and visitors.

Ideally located for commuters, the property benefits from excellent transport links, with easy access to the M20 motorway and nearby East Malling, West Malling, and New Hythe railway stations offering regular rail services.

With a long lease and well-presented interiors, this apartment is an excellent opportunity for first-time buyers or investors. The Vendors are highly motivated and keen to achieve a sale by March, with a preference for chain-free buyers. The Sellers are purchasing a New Build property, meaning this would be the end of the chain and allowing for a smooth and speedy transaction.

- Ground Floor Apartment
- Sought After Development
- Two Good Sized Bedrooms
- Ensuite To Master Bedroom
- Recently updated flooring throughout
- 4 Year Old Boiler (Approx)
- Allocated Car Port
- EPC Rating C





LOCAL AREA INFORMATION FOR LARKFIELD

Larkfield is a sought after area thanks to its convenient access to so many things.

For recreation you have the local leisure centre at Larkfield, many parks, green spaces and countryside close by. Leybourne Lakes and Manor Park are particularly noteworthy.

There are a good range of shops, supermarkets and eateries in Larkfield (including Martin's Square). West Malling is the closest town (less than 2 miles away) and is one of the most attractive small towns in mid-Kent with a wide main street lined on each side by a fine collection shops and eateries. Maidstone is approximately 5 miles away.

For the commuter Junction 4 of the M20 gives access to the motorway network. There are mainline train stations at nearby West Malling, Aylesford and East Malling.

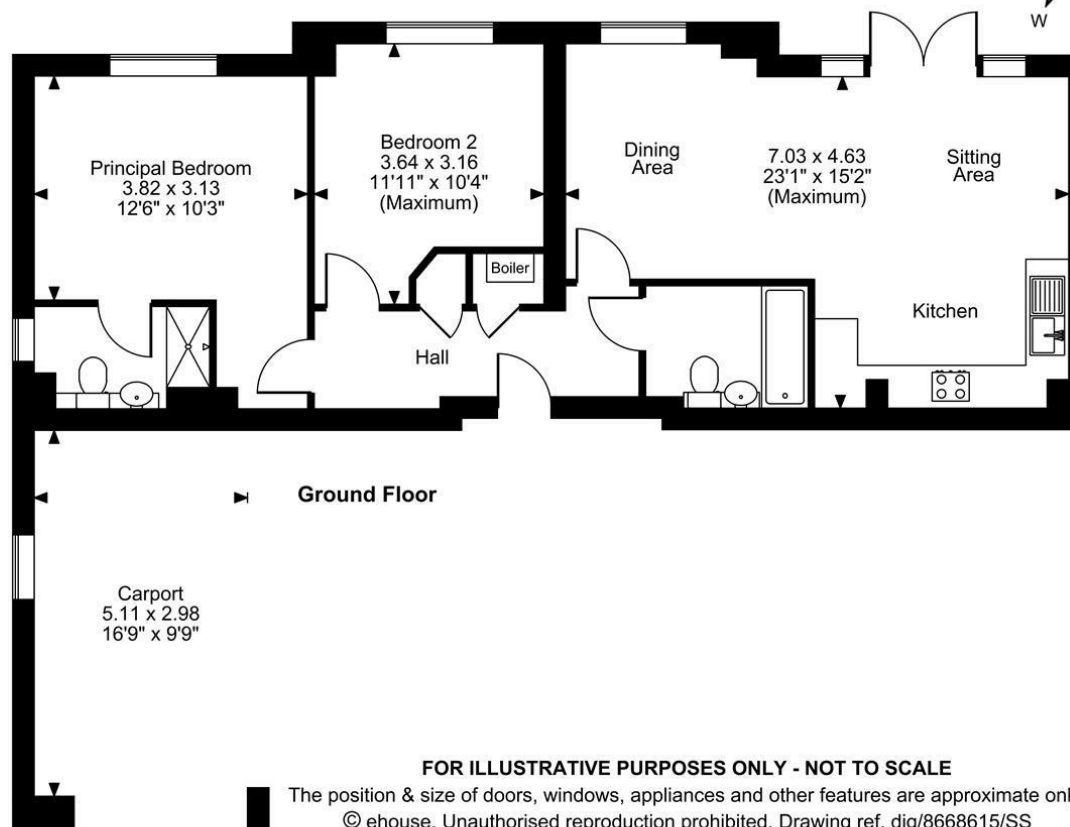
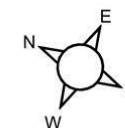
For education there is a comprehensive range of primary, grammar and private educational opportunities. For more schools information please visit www.kent-pages.co.uk/education or ask for a Page & Wells Key Facts for Buyers Guides.

ADDITIONAL INFORMATION

Leasehold
Council Tax Band C
EPC Rating C
UPVC Double Glazing
Gas Central Heating
Ground Rent - £433.37/year
Service Charge - £1428.19 / 6 months
136 Years Left on Lease



Sherwood Avenue, Larkfield, Aylesford
Approximate Gross Internal Area
Main House = 745 Sq Ft/69 Sq M
Garage = 164 Sq Ft/15 Sq M
Total = 909 Sq Ft/84 Sq M



FOR ILLUSTRATIVE PURPOSES ONLY - NOT TO SCALE

The position & size of doors, windows, appliances and other features are approximate only.
© ehouse. Unauthorised reproduction prohibited. Drawing ref. dig/8668615/SS

Page & Wells limited for themselves and for the vendors of this property whose agents they are give notice that: 1. These particulars do not constitute any part of, an offer or a contract. 2. All statements contained in these particulars as to this property are made without responsibility on the part of Page & Wells Limited or the Vendor. 3. None of the statements contained in these particulars as to the property is to be relied on as statements or representations of fact. 4. Any intending purchaser must satisfy himself by inspection or otherwise as to the correctness of each of the statements contained in these particulars. 5. The vendor does not make or give, and neither Page & Wells Limited nor any person in their employment has any authority to make or give any representation whatsoever in relation to this property. These particulars are supplied on the understanding that all negotiations are carried out throughout Page & Wells Limited. Properties with a reference prefixes EAA are those which Page & Wells Limited disclose an interest in accordance with the provisions of the Estates Agents Act 1979

