



Connells

Scarborough Close
Grantham



Property Description

Connells are delighted to bring to the market this beautifully maintained four bedroom detached home with a driveway and garage in a sought after location is not to be missed!

This family home comprises of entrance hall, lounge / diner, study, downstairs w.c, kitchen / breakfast room, utility. To the first floor you will find the family bathroom and four good size bedrooms with the master bedroom benefiting from built in wardrobes and en-suite.

Externally, the front of the property offers a driveway and a garage. The rear garden is enclosed perfect for entertaining with a patio area and lawn area.

Viewings is highly recommended to fully appreciate this stunning home! Call Connells today for more details and to arrange your viewing.

Ground Floor

Entrance Hall

With two windows, doors leading to the lounge, study, kitchen, downstairs w.c, under stairs cupboard, radiator, stairs leading to the first floor.

Lounge

23' 3" x 11' 3" (7.09m x 3.43m)
Stunning bay window, window to the front and side, doors leading to the entrance hall and the kitchen, carpet, radiator.

Study

10' 4" x 7' 5" (3.15m x 2.26m)
With a window.

Downstairs W.C

Wash hand basin and w.c.

Kitchen

17' 3" x 9' 9" (5.26m x 2.97m)
With a window to the rear, radiator, doors leading to the entrance hall, lounge, utility.

Utility Room

6' 8" x 5' 1" (2.03m x 1.55m)
With a door leading to the rear garden, door leading in to the kitchen, space for appliances, sink.

First Floor

Landing

With doors leading to four bedrooms, storage cupboard and the family bathroom.

Bedroom One

11' 6" x 11' 4" (3.51m x 3.45m)
With a window to the side, built in wardrobe, carpet, door leading to the en-suite.

En-Suite

With a window, shower cubicle, wash hand basin, w.c, towel rail.

Bedroom Two

10' 8" x 10' 1" (3.25m x 3.07m)
With a window, carpet, built in wardrobes.

Bedroom Three

10' 4" x 9' 3" (3.15m x 2.82m)

With a window, carpet, built in wardrobes.

Bedroom Four

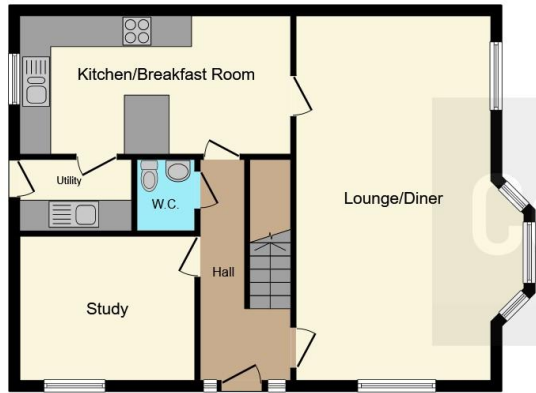
9' 8" x 7' 10" (2.95m x 2.39m)

With a window, carpet.

Bathroom

With a window, bath with shower over, wash hand basin, w.c, radiator.

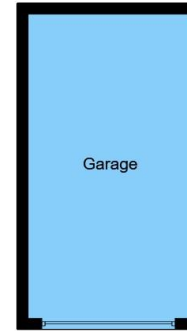




Ground Floor



First Floor



Garage



This floor plan is for illustrative purposes only. It is not drawn to scale. Any measurements, floor areas (including any total floor area), openings and orientation are approximate. No details are guaranteed, they cannot be relied upon for any purpose and they do not form part of any agreement. No liability is taken for any error, omission or misstatement. A party must rely upon its own inspection(s). Powered by www.focalagent.com

To view this property please contact Connells on

T 01476 590 050
E grantham@connells.co.uk

2 Watergate
 GRANTHAM NG31 6PR

EPC Rating: B Council Tax
 Band: D

view this property online connells.co.uk/Property/GRM309203

Tenure: Freehold



1. MONEY LAUNDERING REGULATIONS Intending purchasers will be asked to produce identification documentation at a later stage and we would ask for your co-operation in order that there will be no delay in agreeing the sale. 2. These particulars do not constitute part or all of an offer or contract. 3. The measurements indicated are supplied for guidance only and as such must be considered incorrect. Potential buyers are advised to recheck measurements before committing to any expense. 4. We have not tested any apparatus, equipment, fixtures, fittings or services and it is in the buyers interest to check the working condition of any appliances.

Connells Residential is registered in England and Wales under company number 1489613, Registered Office is Cumbria House, 16-20 Hockliffe Street, Leighton Buzzard, Bedfordshire, LU7 1GN. VAT Registration Number is 500 2481 05.

See all our properties at www.connells.co.uk | www.rightmove.co.uk | www.zoopla.co.uk

Property Ref: GRM309203 - 0008