



Guide Price
£300,000

Freehold

3x  1x  2x 

**May Street, Cuxton,
Rochester, Kent, ME2**

OVER 60?

Secure this property
for up to **59% less!**

Wards
Helping you move forwards



Main features

- Wood burner stove, character features
- Utility/lean to with access to the garden
- Sought after village location, walking distance to station
- Perfect for first time buyers, great catchment area for Cuxton School

Accommodation

GROUND FLOOR

- Lounge : 12'2 x 11'4 (3.71m x 3.46m)
- Dining Room : 12'3 x 12'0 (3.74m x 3.66m)
- Kitchen : 8'6 x 7'0 (2.59m x 2.14m)
- Bathroom : 6'7 x 6'1 (2.01m x 1.86m)
- Lean To/Utility : 16'9 x 4'8 (5.11m x 1.42m)

SPLIT LEVEL FIRST FLOOR

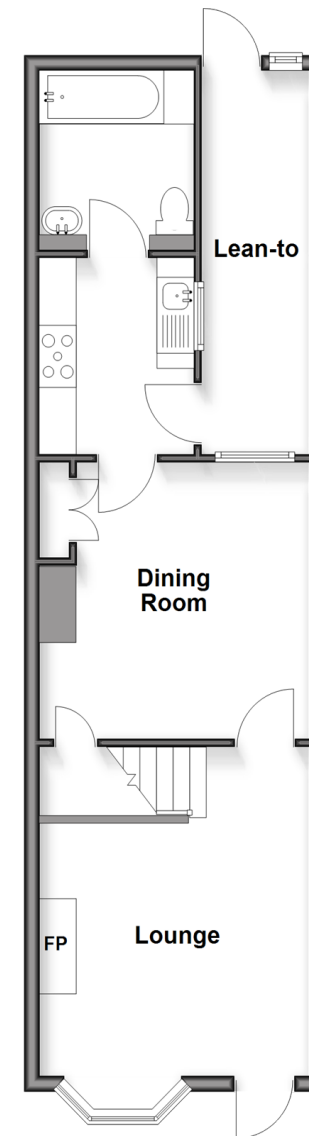
- Landing
- Bedroom 1 : 12'1 x 11'3 (3.69m x 3.43m)
- Bedroom 2 : 12'3 x 11'11 (3.74m x 3.63m)
- Bedroom 3 : 10'1 x 6'11 (3.08m x 2.11m)

OUTSIDE

- Rear Garden

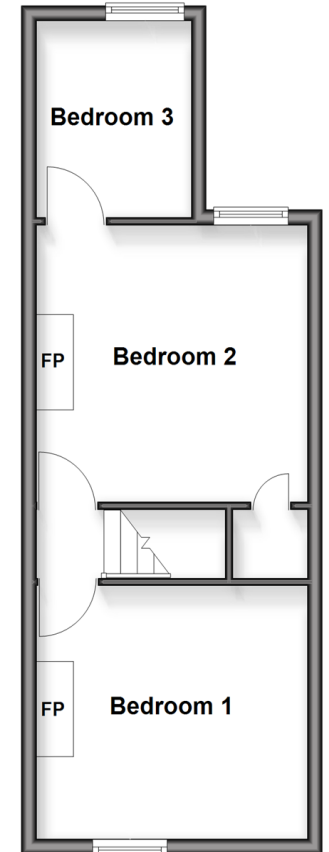
Ground Floor

Approx. 48.3 sq. metres (519.9 sq. feet)



Split Level First Floor

Approx. 35.0 sq. metres (376.7 sq. feet)



Call Strood - 01634 716597 ■ wardsof Kent.co.uk

- Legal advice should be taken to verify fixtures/fittings, planning, alterations and/or lease details
- Appliances & services are untested, dimensions are approximate and floor plans are not to scale
- Through a Homewise Home For Life Plan people aged 60+ can secure this property for up to 59% less, by purchasing a Lifetime Lease



11846855/20260131/DV/CM