



Western Gateway, E16

£2,800 Per calendar month

A bright three bedroom apartment on the second floor of this modern development. This apartment has an open plan reception room, wooden flooring, a private balcony and residents gym.

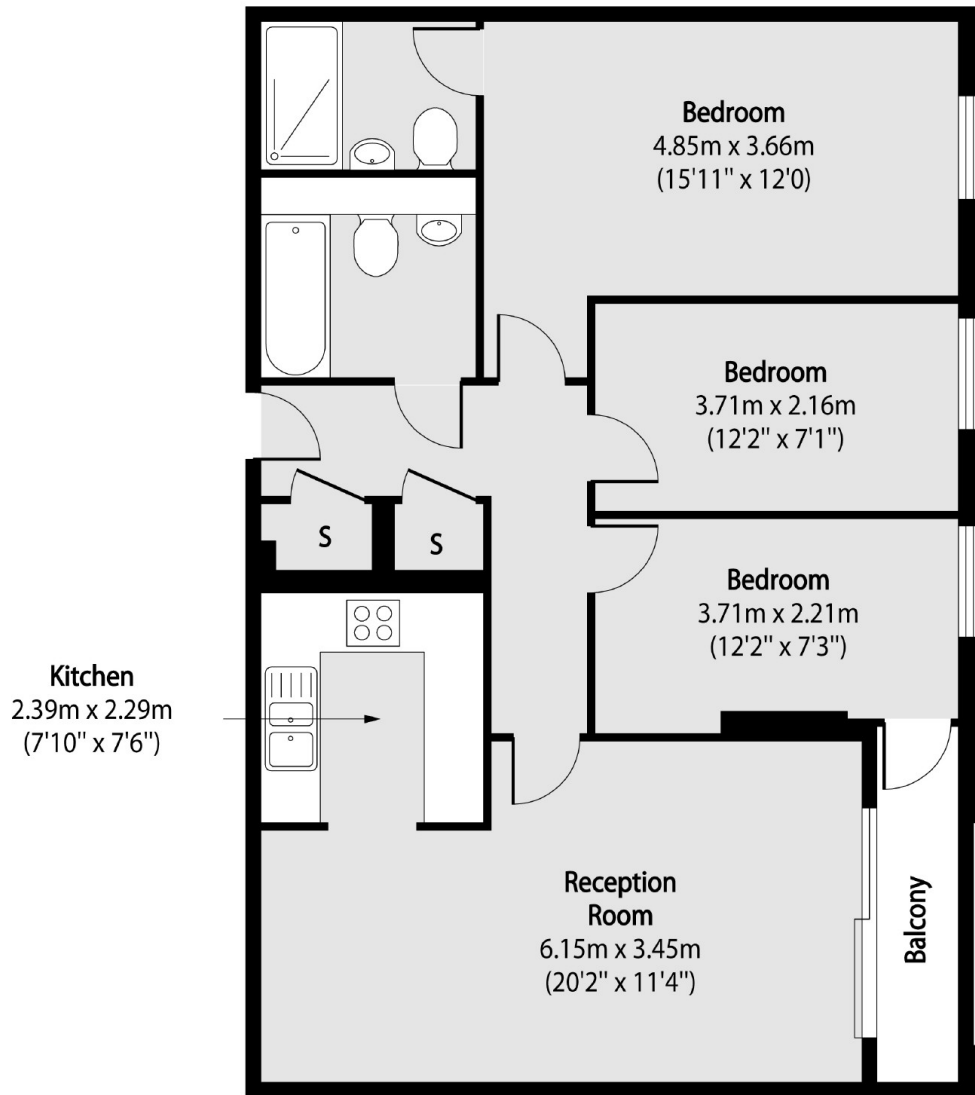
Westgate Apartments is well located for the water sports, bars, and restaurants of Royal Victoria Docks including the popular China Palace.

Features

- Three Bedrooms
- Two Bathrooms
- Second Floor
- Concierge
- Residents Gym
- Secure Parking

Western Gateway,
London, E16

Second Floor



Total area (approx): 74.32 sq m (800 sq. ft)

Balcony total area (approx): 3.06 sq m (33 sq. ft)