



8 Rockville Park, Plymstock, Plymouth, Devon, PL9 7DG



Price £435,000



Situated in a quiet cul-de-sac in the heart of Plymstock, this beautifully presented extended four-bedroom semi-detached home offers the perfect blend of modern living that has been lovingly combined with period features.

The property has been thoughtfully maintained and improved by the current owners, resulting in a stylish and well-proportioned home ideal for families. To the front there is a block-paved driveway provides off-road parking for up to three vehicles, alongside access to a garage offering additional storage or secure parking.

Inside, the accommodation is both spacious and functional, featuring a bright and welcoming layout to include a spacious bay fronted lounge. The heart of the home is the open plan kitchen diner and family room with a feature fireplace with inset log burner. The modern fitted kitchen with fitted hob and oven. The spacious utility room helps keep household tasks separate from the main living areas, while a downstairs WC adds everyday convenience and access is provided to the garage.

On the first floor there are four spacious bedrooms and a modern three-piece bathroom suite.

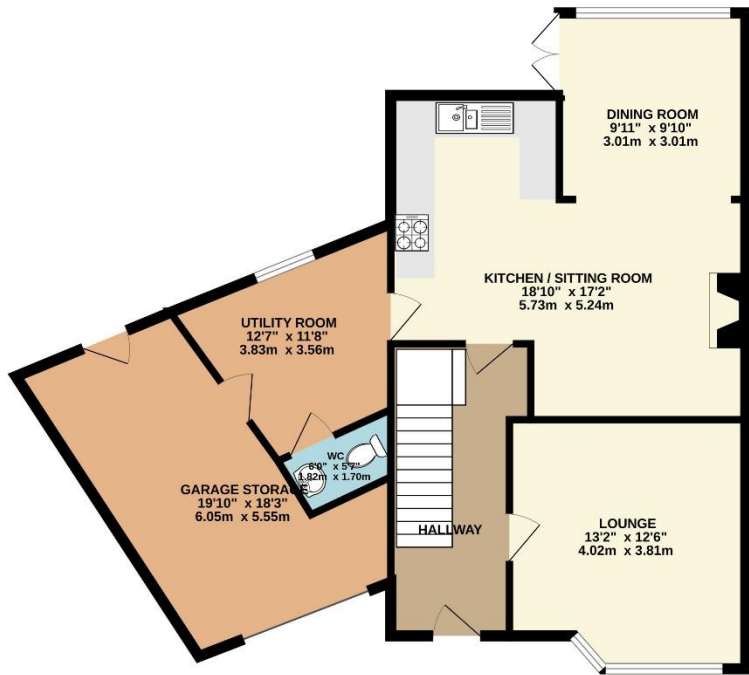
To the rear, the home benefits from a generous, fully enclosed south facing garden that provides a perfect and safe environment for children and the timber decked seating is perfect for outdoor entertaining. The space offers a high degree of privacy, and backs onto Dean Cross playing fields where there are both cricket and football pitches.

This property is close to an array of local amenities including the Broadway Shopping Centre, Doctor's Surgeries and Dental Surgeries. Recreational facilities can be found close by to include the Mount Batten Water Sports Centre, Staddon Heights Golf Course and the picturesque countryside and coastlines found at the South Hams which offers stunning walks along the South West coastal path. Transport links provide access to the vibrant Plymouth City Centre and the South Hams.



To view this property call Lang Town & Country Estate Agents on **01752 456000**.





TOTAL FLOOR AREA: 1380 sq.ft. (128.2 sq.m.) approx.
Measurements are approximate. Not to scale. Illustrative purposes only
Made with Metropix ©2026



Lang Town & Country

6 The Broadway

Plymstock

Plymouth

PL9 7AU

Tel: 01752 456000

Email: plymstockoffice@langtownandcountry.com

Lang Town & Country endeavour to ensure the accuracy of property details produced and displayed, we have not tested any apparatus, equipment, fixtures, fittings or services and so cannot verify that they are connected, in working order or fit for purpose. A buyer must check the availability of any property and make an appointment to view before embarking on any journey to see a property.



YouTube