



Chelsea Creek

Park Street, SW6

knok
knok

A lateral riverside residence in Chelsea Creek

Set within the prestigious Chelsea Creek development, this expansive first-floor lateral apartment offers 1,991 sq ft of refined, design-led living. The scale is immediately apparent. Wide proportions, considered flow, and floor-to-ceiling glazing create a sense of calm openness rarely found in London apartments.

The principal living space spans an impressive open-plan kitchen, dining and reception area ideal for both entertaining and everyday life. Clean architectural lines are complemented by high-spec finishes, integrated appliances and generous storage. The space extends seamlessly onto a substantial private balcony, offering a peaceful outdoor retreat overlooking landscaped surroundings.

The principal suite is thoughtfully arranged with a walk-in dressing room, bespoke integrated wardrobes and a beautifully appointed en-suite bathroom. Two further double bedrooms provide excellent flexibility one benefiting from its own en-suite, the other served by a stylish family bathroom. A separate utility room ensures practical living without compromising on design.

Air conditioning runs throughout, and the apartment has been newly refurbished to an exacting standard. This is turnkey London living lateral, secure, and quietly luxurious.





Refined, Riverside,
Remarkably Private.



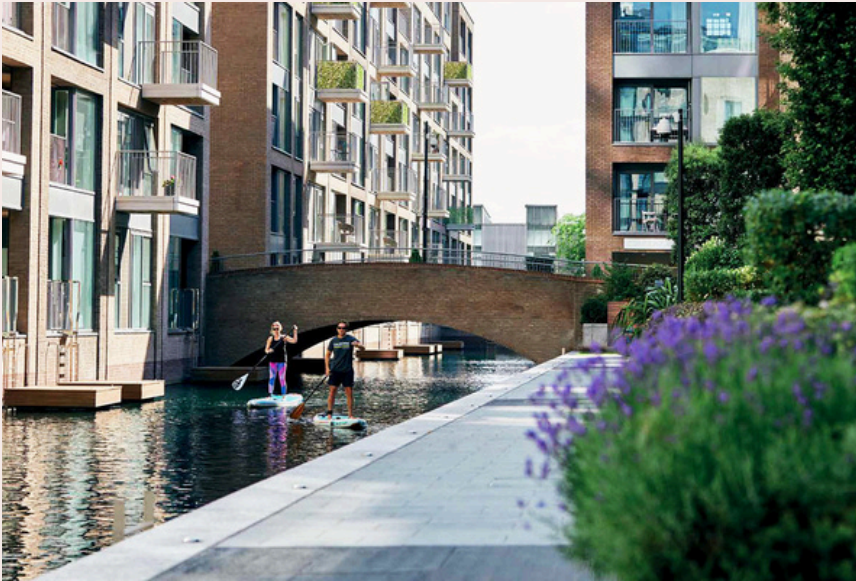
Luxury London Living,
Elevated by Design.







Chelsea Creek Living



Highlights;

- Lateral accommodation
- Three generous double bedrooms
- Three bathrooms (two en-suite)
- Large private balcony
- Newly refurbished interiors
- Comfort cooling throughout
- 24-hour concierge & porter
- Residents' spa with pool, sauna, steam room & gym
- Secure underground parking



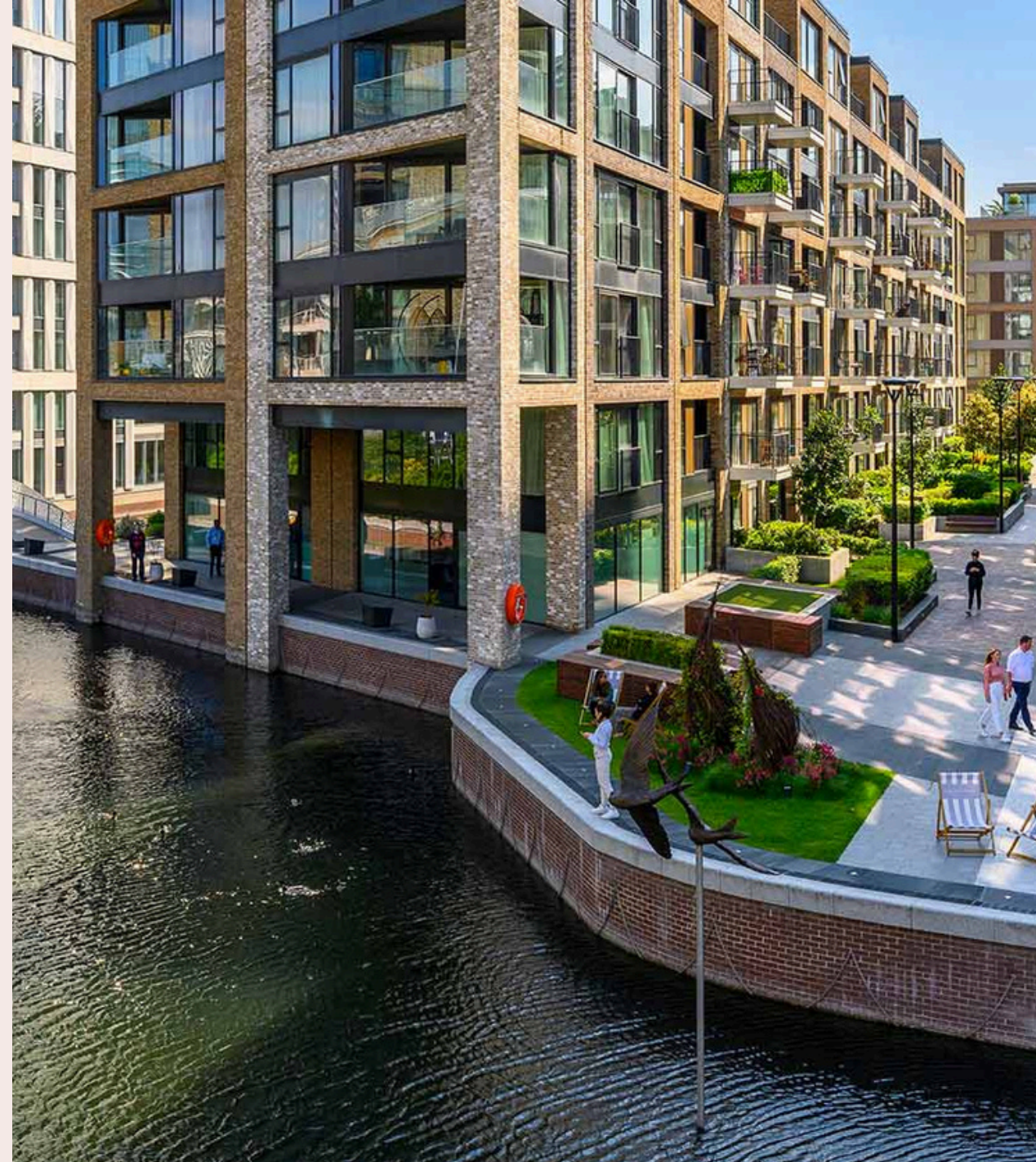
Fulham meets Chelsea

Chelsea Creek is one of West London's most sought-after riverside developments, offering a level of service and amenity typically reserved for five-star hotels.

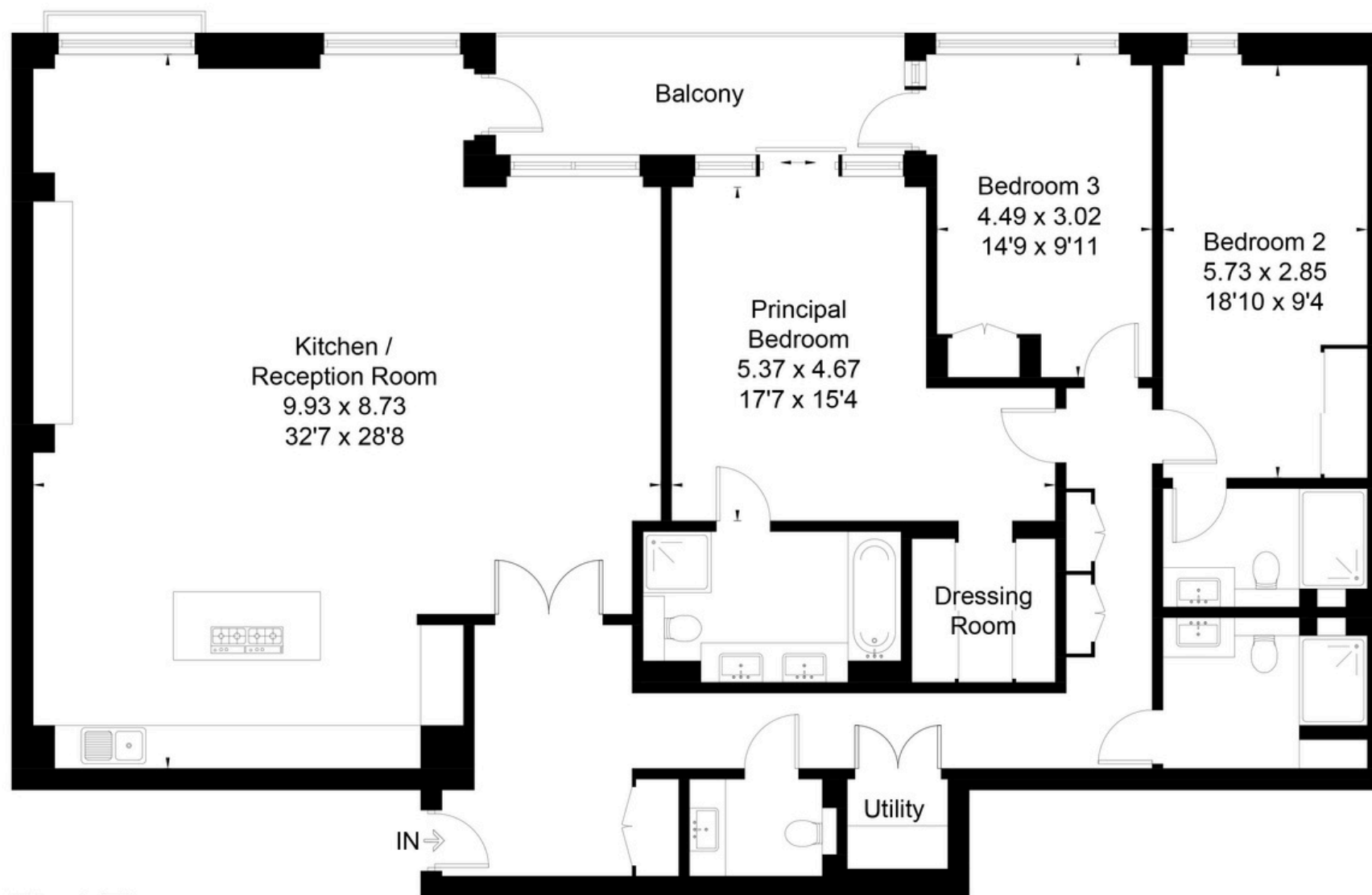
Residents enjoy access to The Spa complete with swimming pool, sauna, steam room, gym and treatment rooms alongside beautifully maintained private gardens and secure underground parking. A 24-hour concierge ensures discretion, security and everyday ease. It's rare to find this combination of scale, finish and full-service living in Fulham.

Perfectly positioned moments from the River Thames and just a short walk to King's Road, Park Street sits at the intersection of Fulham's relaxed village character and Chelsea's international polish.

Waterside walks, independent cafés, fine dining and boutique shopping are all within easy reach. Imperial Wharf station provides direct links to Clapham Junction and Shepherd's Bush, while Sloane Square and South Kensington are a short journey away.



Approximate Floor Area = 185 sq m / 1991 sq ft



First Floor



Drawn for illustration and identification purposes only by @fourwalls-group.com #103534

knok
knok