



  
HENLEY HOMES

10 Dorchester Drive | London  
SE24 0DQ



There are houses that offer beautiful accommodation, and there are houses that tell a story. 10 Dorchester Drive is one of the latter. Designed by architects Leslie H. Kemp and Frederick E. Tasker, the house was conceived as part of the groundbreaking Daily Mail Ideal Home Exhibition's "Village of Tomorrow" in 1934 a visionary showcase that imagined the future of British family living. Completed in 1935–36, only three examples of this remarkable design were ever built, making 10 Dorchester Drive exceptionally rare. Today, the property is Grade II listed, recognised by Historic England for its architectural significance, elegant Art Deco styling and remarkably preserved original features, including its steel Crittall windows, curved elevations and roof terrace. The property also formed the long-term home of the internationally renowned psychologist Professor Hans J. Eysenck, adding another fascinating chapter to its remarkable history. Nearly ninety years later, this extraordinary house remains as inspiring and relevant as when it first imagined the future.

## Arrival

Approached via private electric gates, the house immediately commands attention. Its crisp white rendered façade, elegant curved frontage and original steel Crittall windows create one of South London's most recognisable Modernist homes. The generous driveway, mature planting and beautifully landscaped gardens provide both privacy and an impressive sense of arrival.





### Designed for Living

Long before open-plan living became fashionable, 10 Dorchester Drive was designed around light, movement and family life. Three beautifully proportioned reception rooms provide elegant spaces for entertaining alongside relaxed family living, while the intelligent flow between rooms reflects the forward-thinking vision of its original architects. Extending to almost 4,000 sq ft, the house continues to offer a layout that feels remarkably contemporary.



### The Heart of the Home

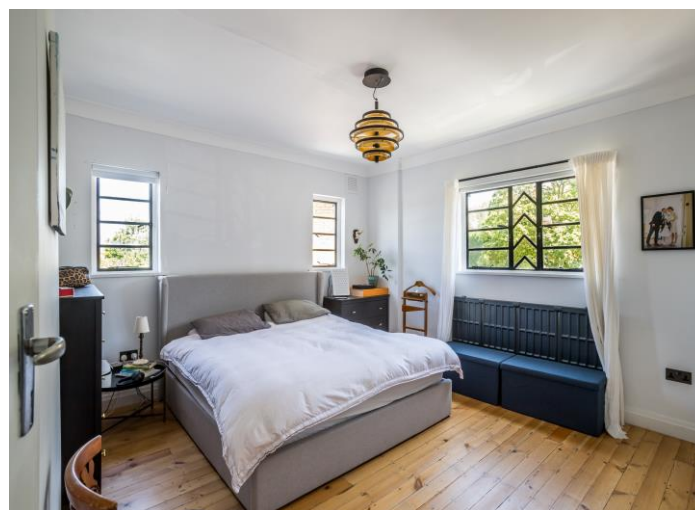
At the centre of the home lies an exceptional 27ft kitchen and dining room a magnificent space where family life naturally comes together. Flooded with natural light and beautifully proportioned, it provides the perfect setting for both everyday living and entertaining on a grand scale. A separate utility room and guest cloakroom add practicality without compromising the elegant simplicity of the design.





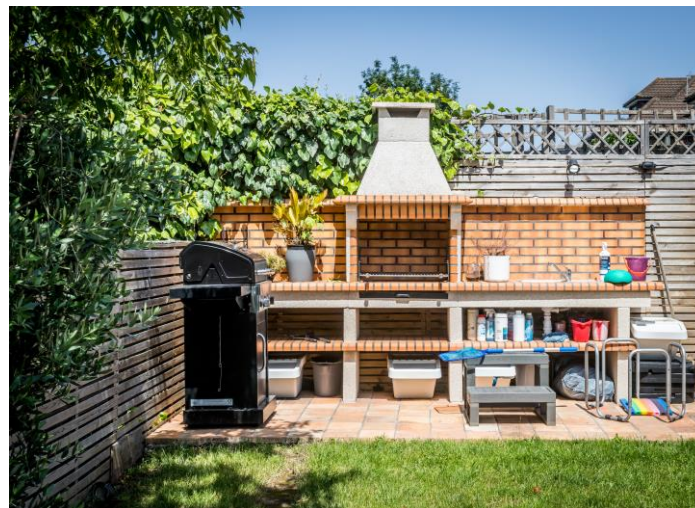
### Private Spaces

The first floor offers four generous double bedrooms, each filled with natural light and thoughtfully arranged to maximise comfort and privacy. The principal suite provides a peaceful retreat, while the remaining bedrooms offer flexible accommodation for family, guests or home working. Beautifully appointed bath and shower rooms complete the first-floor accommodation.



## Outside

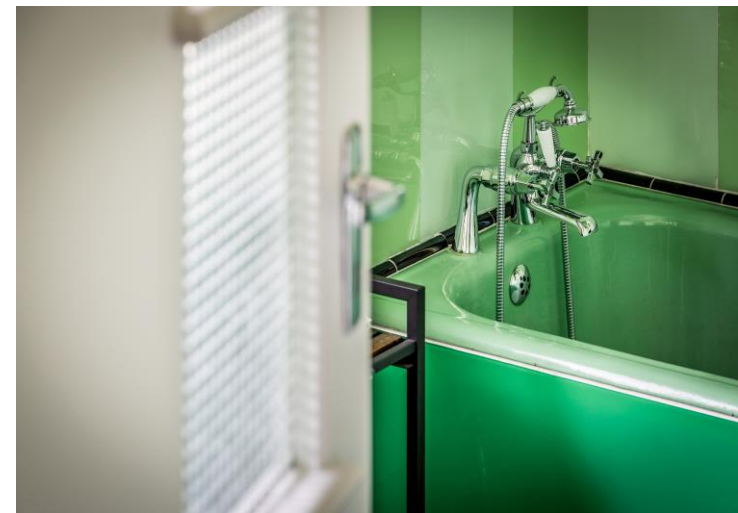
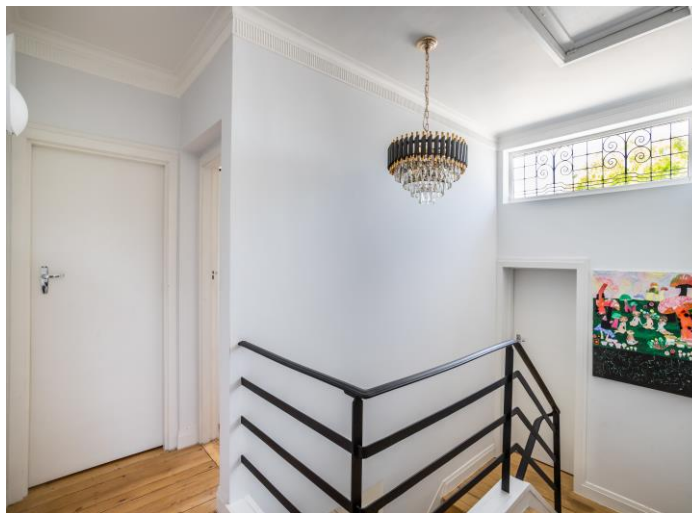
Beautifully landscaped gardens frame the house and provide wonderful spaces for outdoor entertaining and relaxation. The detached gym and studio, complete with its own shower room, offers exceptional versatility as a wellness suite, creative studio, guest accommodation or home office. Above, the expansive roof terrace remains one of the home's defining architectural features a wonderful place to relax while appreciating the clean geometry of this iconic residence.





### Herne Hill

One of South London's most sought-after neighbourhoods, Herne Hill combines village character with exceptional connectivity. Independent cafés, restaurants and boutiques sit alongside the open green spaces of Brockwell Park and nearby Dulwich Park, while outstanding schools and excellent rail links make the area one of London's most desirable places to call home.



**Accommodation**

Approx. 3,985 sq ft (370 sq m) Features • Grade II Listed Modernist residence • One of only three houses built to this celebrated design • Original steel Crittall windows • Four double bedrooms • Three reception rooms • 27ft kitchen/dining room • Detached gym/studio with shower room • Landscaped gardens • Roof terrace • Private electric gates and driveway





### A Rare Opportunity

Some houses are bought for their size. Others for their location. Very few offer the opportunity to own a piece of Britain's architectural history. 10 Dorchester Drive is one of those rare homes.







Total = 370.28 sq. m / 3985 sq. ft  
 Approximate Gross Internal Area = 370.28 sq. m / 3985 sq. ft  
 This plan is for layout guidance only. Measurements are approximate: Not to scale.

Score	Energy rating	Current	Potential
92+	A		
81-91	B		
69-80	C		72 C
55-68	D	67 D	
39-54	E		
21-38	F		
1-20	G		

These details are for guidance only and complete accuracy cannot be guaranteed. If there is at any point, which is of particular importance, verification should be obtained. They do not constitute a contract or part of a contract. All measurements are approximate. No guarantee can be given with regard to planning permissions or fitness for purpose. No apparatus, equipment, fixture or fitting has been tested. Items shown in photographs are NOT necessarily included. Interested Parties are advised to check availability and make an appointment to view before travelling to see a property.



HENLEY HOMES

0203 873 2700  
[info@henleyhomes.agency](mailto:info@henleyhomes.agency) | [www.henleyhomes.agency](http://www.henleyhomes.agency)