



Altham Terrace, Lincoln

£525 PCM


MARTIN & CO

Altham Terrace, Lincoln

Apartment

1 Bedrooms, 1 Bathroom

£525 PCM

Date Available: 1st June 2026

Deposit: £605

Unfurnished

- 1st Floor Studio Flat
- Modern Kitchen
- Modern Shower Room
- Integrated Appliances
- City Centre Location
- Water bills included
- EPC - D
- Council Tax - A

Studio flat, modern kitchen and shower room and modern flooring throughout - Studio First Floor Apartment, comprising of Livingroom/bedroom, Fitted Kitchen and Shower room, Ideal location for City Centre Living, on road parking out side of Flats - Includes water bills. Suitable for a single occupant Only.



Studio flat, modern kitchen and shower room and modern flooring throughout - Studio First Floor Apartment, comprising of Living room/bedroom, Fitted Kitchen and Shower room, Ideal location for City Centre Living, on road parking out side of Flats - Includes water bills.

Suitable for single occupancy only

Integrated appliances include a Fridge and Washing Machine.

Unfortunately we cannot accept pets or smokers on this property.

Length of tenancy - 12 months initial tenancy
Council tax band - A - Lincoln city council

Broadband (estimated speeds)

Standard - unobtainable

Superfast - unobtainable

Ultrafast - unobtainable

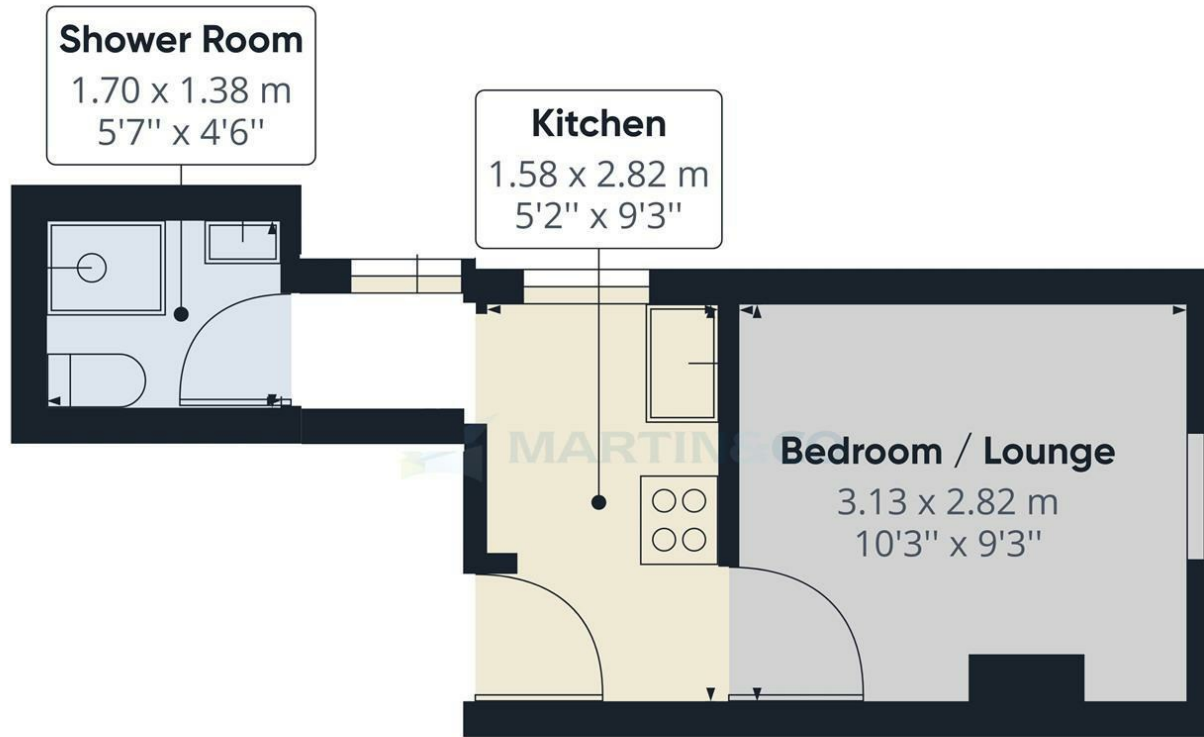
Satellite & Cable TV Availability - BT & Sky

Mobile (based on calls indoors) - Unobtainable



Energy Efficiency Rating		
	Current	Potential
Very energy efficient - lower running costs		
(92 plus) A		
(81-91) B		
(69-80) C		
(55-68) D		
(39-54) E		
(21-38) F		
(1-20) G		
Not energy efficient - higher running costs		
	66	78
England & Wales	EU Directive 2002/91/EC	EU Directive 2002/91/EC

Environmental Impact (CO ₂) Rating		
	Current	Potential
Very environmentally friendly - lower CO ₂ emissions		
(92 plus) A		
(81-91) B		
(69-80) C		
(55-68) D		
(39-54) E		
(21-38) F		
(1-20) G		
Not environmentally friendly - higher CO ₂ emissions		
England & Wales	EU Directive 2002/91/EC	EU Directive 2002/91/EC



Approximate total area⁽¹⁾
15.92 m²
171.33 ft²

(1) Excluding balconies and terraces

While every attempt has been made to ensure accuracy, all measurements are approximate, not to scale. This floor plan is for illustrative purposes only.

GIRAFFE 360

Martin & Co Lincoln Lettings
33 The Forum, North Hykeham, Lincoln, Lincolnshire, LN6
8HW
01522 503727 . lincoln@martinco.com

01522 503727
<http://www.martinco.com>



Accuracy: References to the Tenure of a Property are based on information supplied by the Seller. The Agent has not had sight of the title documents. A Buyer is advised to obtain verification from their Solicitor. Items shown in photographs including but not limited to carpets, fixtures and fittings are not included unless specifically mentioned within the sales particulars. They may however be available by separate negotiation. Buyers must check the availability of any property and make an appointment to view before embarking on any journey to see a property. No person in the employment of the agent has any authority to make any representation about the property, and accordingly any information given is entirely without responsibility on the part of the agents, sellers(s) or lessors(s). Any property particulars are not an offer or contract, nor form part of one. **Sonic / laser Tape:** Measurements taken using a sonic / laser tape measure may be subject to a small margin of error. **All**

Measurements: All Measurements are Approximate. **Services Not tested:** The Agent has not tested any apparatus, equipment, Fixtures and Fittings or services and so cannot verify that they are in working order or fit for the purpose. A Buyer is advised to obtain verification from their Solicitor or Surveyor.