



PORTOBELLO ROAD



Portobello Road, W11

Designed by the RIBA award winning Taro Tsuruta, is this upper maisonette that's flooded with natural light and positioned on a prominent corner of Portobello Road. This dynamic apartment has a great range of balanced accommodation over three floors, with its own private ground floor entrance. The first floor offers a large reception room with wooden floors, a cloakroom/WC and a bespoke kitchen which leads out to a brilliant terrace overlooking Tavistock Piazza. There are three bedrooms and two bathrooms on the upper floors, along with a rather special indoor garden on the top of the house. Set on the iconic Portobello Road, with All Saints Road, Golborne Road, Notting Hill Gate and Ladbroke Grove all just a short walk away, the area offers an endless array of cafés, restaurants and boutiques to explore.

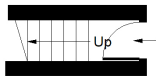




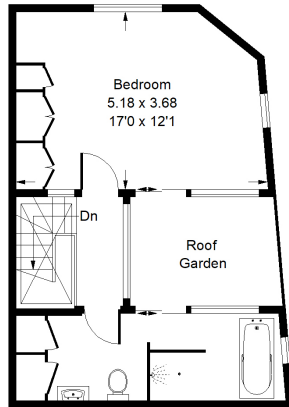




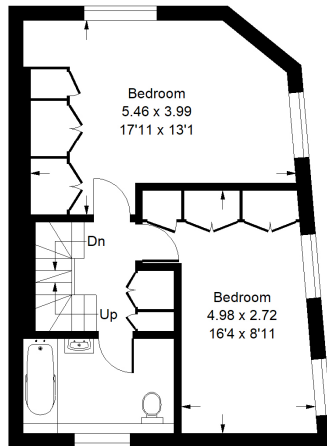
Approx. Gross Internal Area
= 142.8 sq m / 1537 sq ft



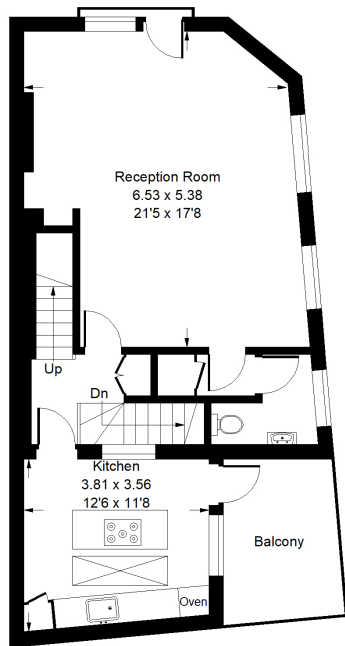
Ground Floor



Third Floor



Second Floor



First Floor

SOME IMAGERY HAS BEEN VIRTUALLY STAGED



Portobello Road, W11 - Leasehold
Local Authority - Royal Borough of Kensington & Chelsea

- Three bedrooms
- Two bathrooms
- Reception room
- Kitchen leading to a large balcony
- Roof garden
- EPC Rating: C



Whilst every attempt has been made to ensure the accuracy of the floor plan, measurements are approximate and not to scale. No guarantee is given on the total square footage of the property quoted on the plan. Figures given are for guidance. Plan is for illustration purposes only, not to be used for valuations.

LONDON OFFICES
Notting Hill • Kensington • North Kensington 020 8960 0181

COUNTRY OFFICE
Cotswolds 01285 707222

mountgrangeheritage.co.uk
hello@mountgrangeheritage.co.uk

