



## West Grove, SE10

£528 Per week

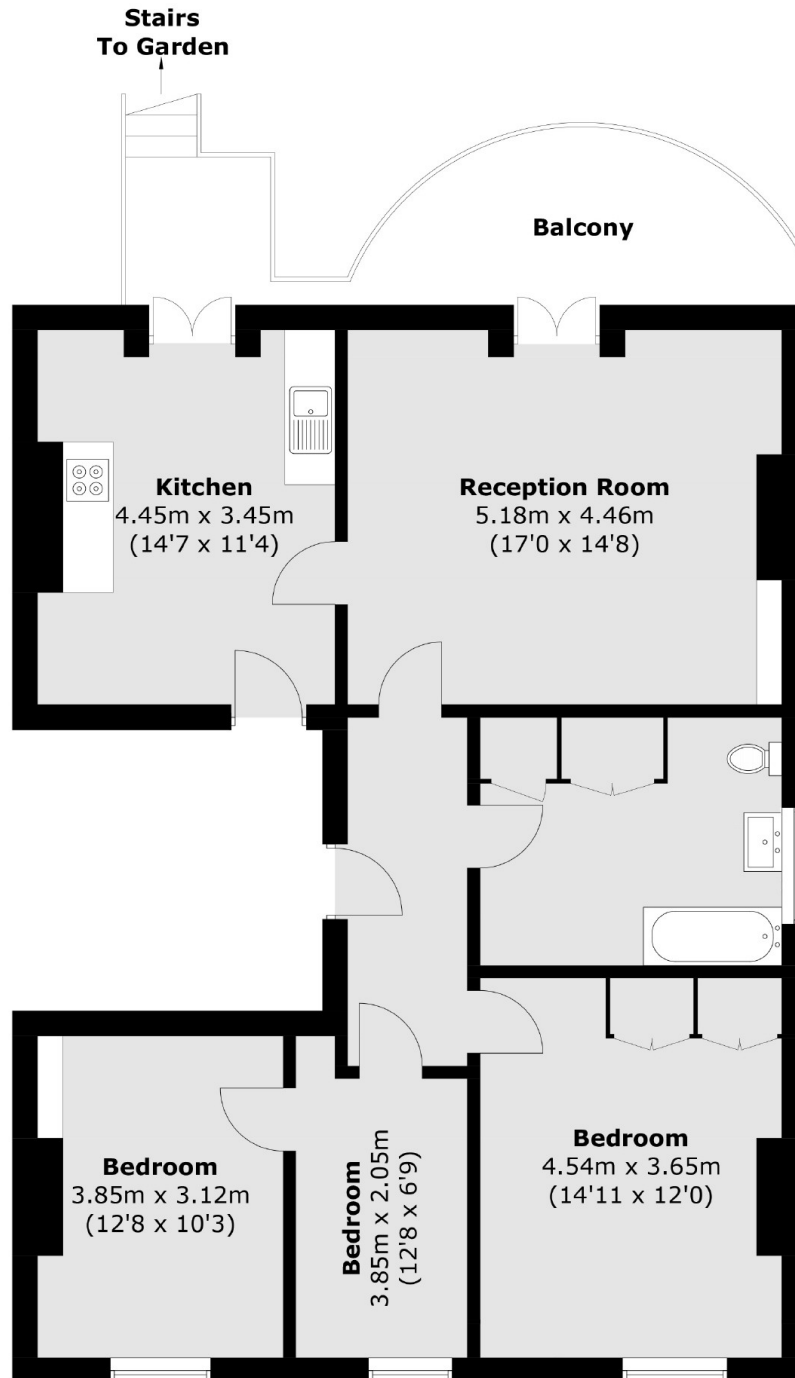
Period conversion two bedroom apartment located at the top of Blackheath Hill, with views towards the river Thames and the O2 from a private decked terrace. This unique top floor flat has an option to use the third room as a work from home space and offers plenty of space throughout. The property showcases a large reception area, a separate kitchen and generous sized rooms throughout.

Westgrove is ideally located 0.6 miles from Greenwich station which offers direct access to the DLR and National Rail service

### Features

- Two Bedrooms
- Study
- One Bathroom
- Private Terrace
- Direct Access To Communal Patio
- Top Floor Flat

West Grove,  
London, SE10



Total area (approx.): 94.0 sq. m (1,011.8 sq. ft)  
Balcony area (approx.): 13.4 sq. m (144.2 sq. ft)