



Wing Road, Leighton Buzzard

£220,000

2 1 2 E

## Wing Road, Leighton Buzzard

- Spacious ground floor maisonette
- Two double bedrooms
- Cellar room that can be used as office / bonus room
- 50% Share of freehold with no ground rent and 999 year lease!
- Ideal position for commuters - short walk to mainline station
- Popular Linslade location offering traditional property & convenience
- No upper chain!
- Two allocated parking spaces next to each other
- Close to Grand Union Canal & scenic walks
- BUYER INCENTIVE IN JULY 2026 - 5% Deposit contribution or cashback (on sale agreed price)



### Floor Plan

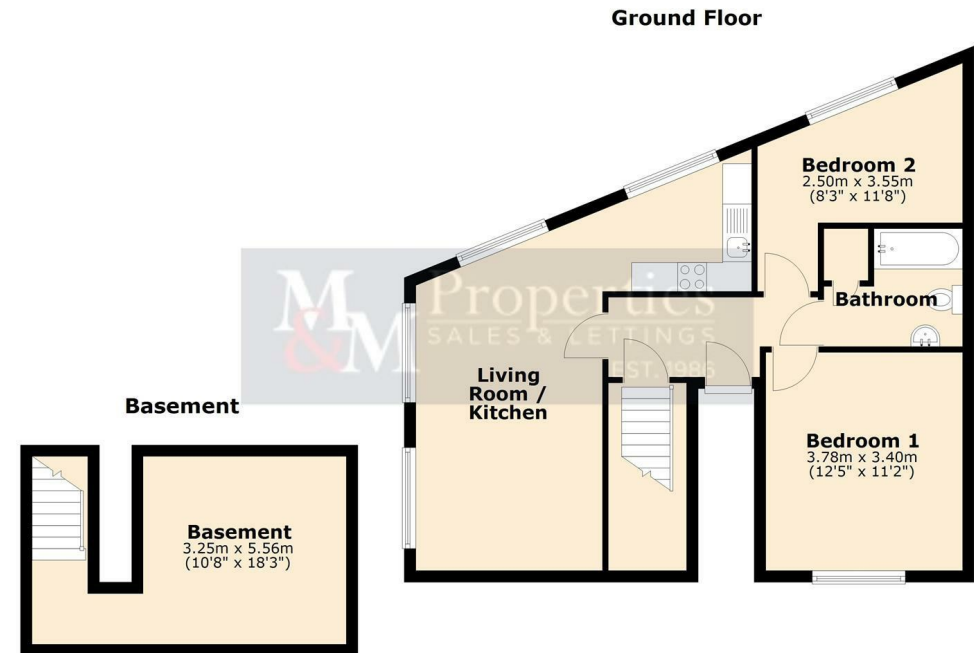


### Viewing

Please contact our Leighton Buzzard Office on 01525 377733.

If you wish to arrange a viewing appointment for this property or require further information.

IMPORTANT: Whilst we aim to make our details accurate and reliable, if there is any point of particular concern to you, please contact the office. The apparatus, equipment, fittings and services have not been checked and therefore it is in the purchaser's interest to establish the working condition of the appliance included. Personal items such as furnishings which may be shown in the photographs are not included in the asking price. No survey has been carried out by M & M Properties. Measurements have a tolerance of +/- 3". Please note that this floorplan has not been drawn to scale and is therefore for room layout purposes only. It does not constitute or form part of a contract. Doors may be hung in opposite directions.



27/29 Hockliffe Street, Leighton Buzzard - LU7 1EZ

Sales: 01525 377733 - Lettings: 01525 371997

sales@mandmproperties.co.uk - lettings@mandmproperties.co.uk

LOCAL PEOPLE WORKING FOR YOU