



Surprisingly spacious three bedroom semi sitting within this landmarked development of Fulwell, in the heart of Sunderland's sought after SR6 postcode district.

Extended at ground floor level, the property internally comprises entrance porch, reception hall, lounge, open plan kitchen and dining room, three generous bedrooms and a bathroom, the property externally has lovely gardens to the front and rear with allocated parking and offers a fresh contemporary feel throughout.

Walking distance from a superb range of schools, Sea Road shopping centre, award winning Blue Flag beaches and local metro stations, this beautifully appointed home should prove to be very popular indeed and deserves immediate internal inspection.

MAIN ROOMS AND DIMENSIONS

Ground Floor

Access via double glazed entrance door.

Entrance Porch

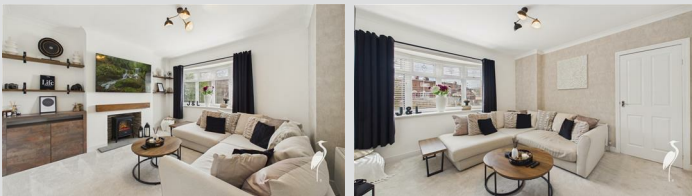
Double glazed windows to the front and side and double glazed door to hall.

Reception Hall



Staircase to the first floor, radiator, Herringbone flooring and storage cupboard. Arch to cloaks cupboard. Doors to the lounge, kitchen/diner and bathroom.

Lounge 13'3" x 13'0"



Double glazed bay window to the front and radiator.

Kitchen/Diner 13'11" x 25'5"



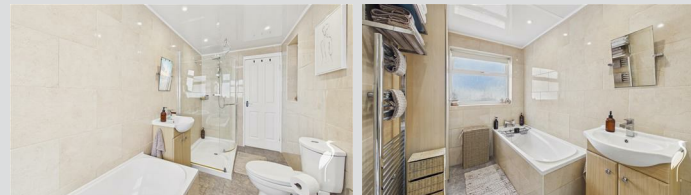
Contemporary kitchen diner with modern work surface over incorporating a 1/2 bowl sink and drainer unit with mixer tap. Integrated appliances include an oven and gas hob with extractor over. Space for washing machine and fridge freezer. Radiator. Opening into sun room.

Dining Area



Double glazed windows to the side and rear, double glazed door to rear garden.

Bathroom 5'10" x 12'9"



Modern bathroom with low level WC, washbasin, bath and shower cubicle with overhead rain fall shower. 2x double glazed windows, cupboards concealing wall mounted Baxi boiler, tiled walls and floor, UPVC lined ceiling and ladder style radiator.

First Floor Landing

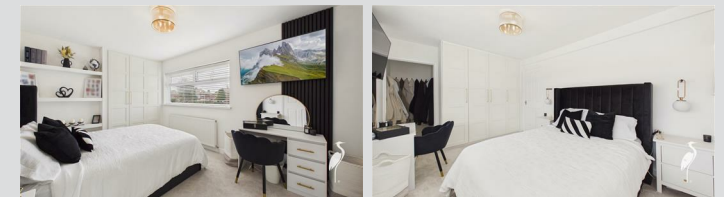
Double glazed window.

Bedroom 1 14'7" x 9'10"



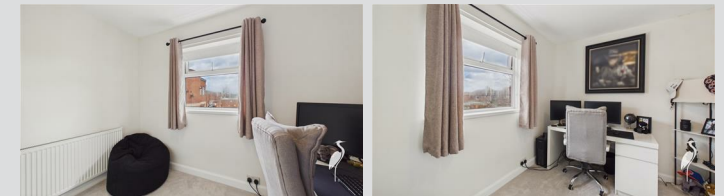
Double glazed window to the front, radiator and 2x fitted wardrobes.

Bedroom 2 9'10" x 10'11"



Double glazed window to the rear and radiator.

Bedroom 3 9'11" x 7'8"



Double glazed window to the rear and radiator.

Visit www.peterheron.co.uk or call 01915106116

Tried. Trusted. Recommended. City Branch 20 Fawcett Street Sunderland SR1 1RH Fulwell Branch 15 Sea Road Fulwell Sunderland SR6 9BS

MAIN ROOMS AND DIMENSIONS

Outside



Gardens front and rear. Allocated parking.

Council Tax Band

The Council Tax Band is Band B.

Tenure Freehold

We are advised by the Vendors that the property is Freehold. Any prospective purchaser should clarify this with their Solicitor.

Important Notice - Particulars

Peter Heron Ltd for themselves and for the vendors of this property whose agents they are, give notice that:-
The particulars are set out for general guidance only for the intending Purchasers and do not constitute part of an offer or contract. Whilst we endeavour to make our sales particulars accurate and reliable, if there is anything of particular importance which you feel may influence your decision to purchase, please contact the office and we will be pleased to check the information. Do so particularly, if contemplating travelling some distance to view the property. All descriptions, dimensions, references to conditions and necessary permissions for use and occupation and other details are given in good faith, and are believed to be correct, however any intending purchasers should not rely on them that statements are representations of fact, but must satisfy themselves by inspection or otherwise as to the correctness of each of them. Independent property size verification is recommended.

Lease details, service charges and ground rent (where

applicable) are given as a guide only and should be checked and confirmed by your Solicitor prior to exchange of contracts. No person in the employment of Peter Heron Ltd has any authority to make or give any representation or warranty whatever in relation to this property or these particulars, nor to enter into any contract on behalf of Peter Heron Ltd, nor into any contract on behalf of the Vendor. The copyright of all details and photographs remain exclusive to Peter Heron Ltd.

Please note that in the event the purchaser uses the services of Peter Heron Conveyancing in the purchase of their home, Peter Heron Ltd will be paid a completion commission of £300.00 by Movewithus Ltd.

Sea Road Viewings

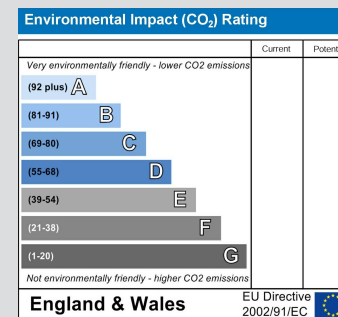
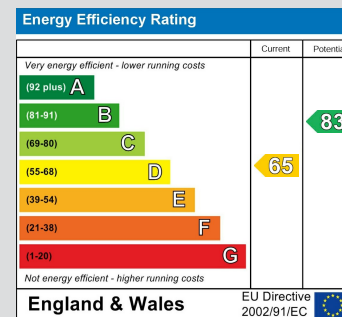
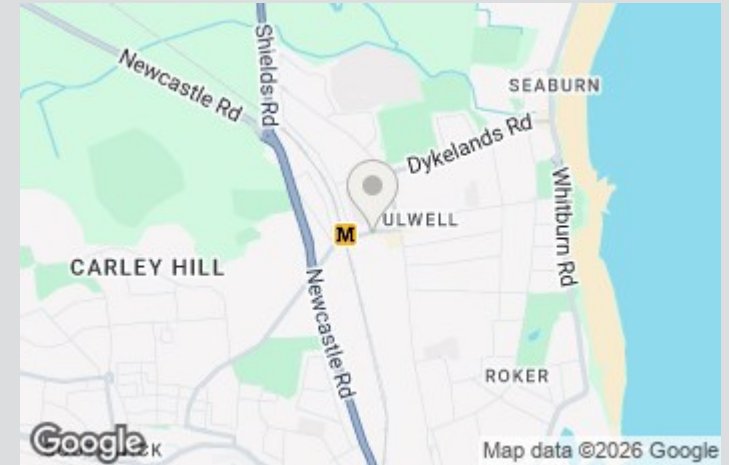
To arrange an appointment to view this property please contact our Sea Road branch on or book viewing online at peterheron.co.uk

Opening Times

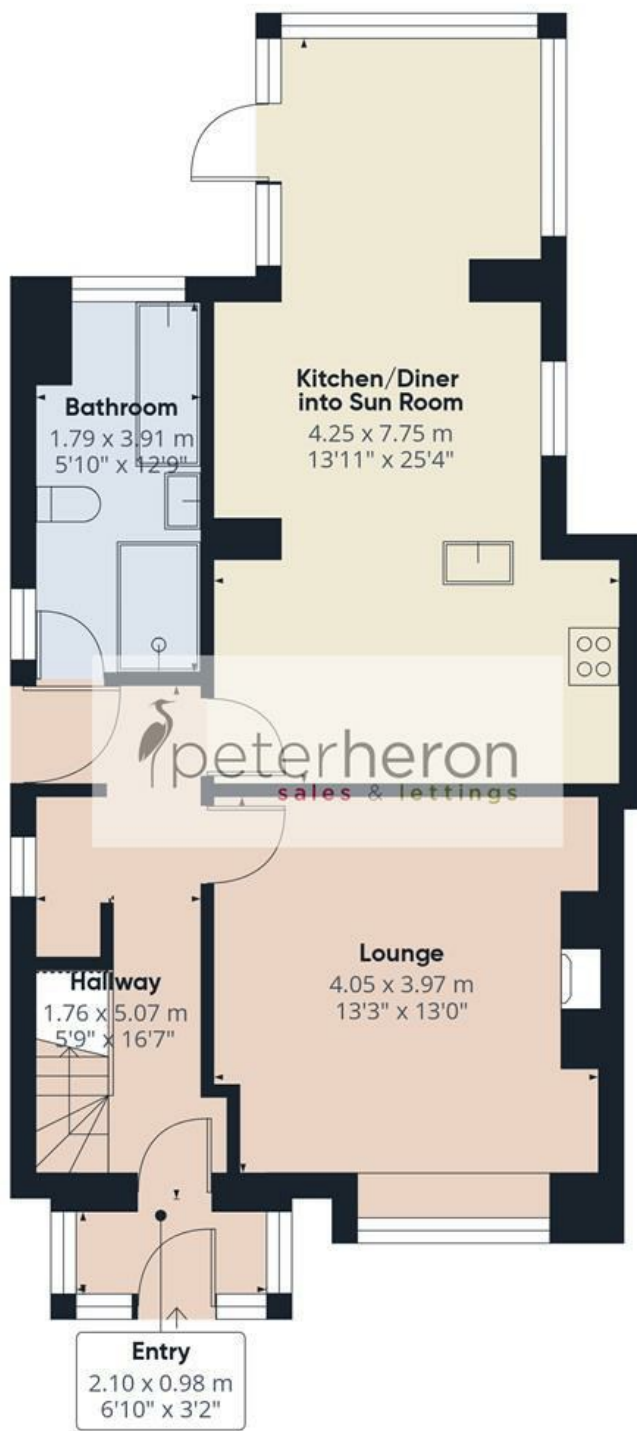
Monday to Friday 9.00am - 5.00pm Saturday 9.00am - 12noon

Ombudsman

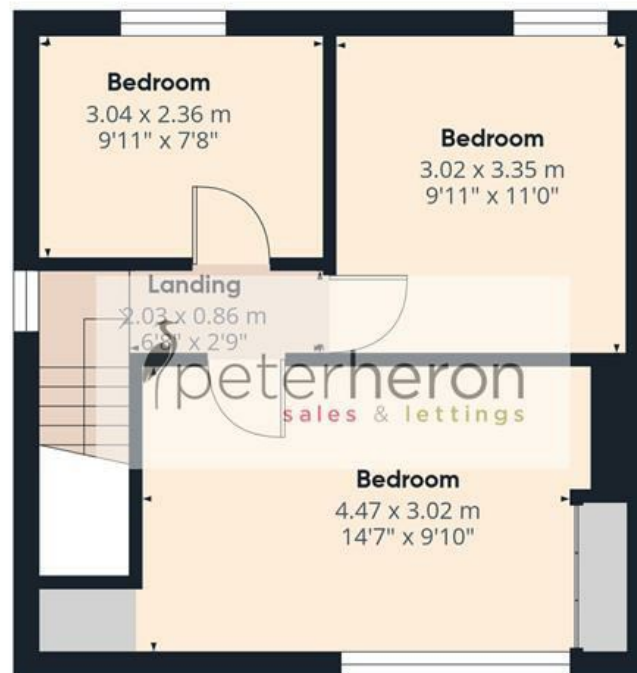
Peter Heron Estate Agents are members of The Property Ombudsman and subscribe to The Property Ombudsman Code of Practice.



Visit www.peterheron.co.uk or call 01915106116



Ground Floor



First Floor

Approximate total area⁽¹⁾

94.6 m²

1018 ft²

(1) Excluding balconies and terraces

Reduced headroom

..... Below 1.5 m/5 ft

Calculations reference the RICS IPMS 3C standard. Measurements are approximate and not to scale. This floor plan is intended for illustration only.

GIRAFFE360

