



Guide Price
£375,000

Freehold

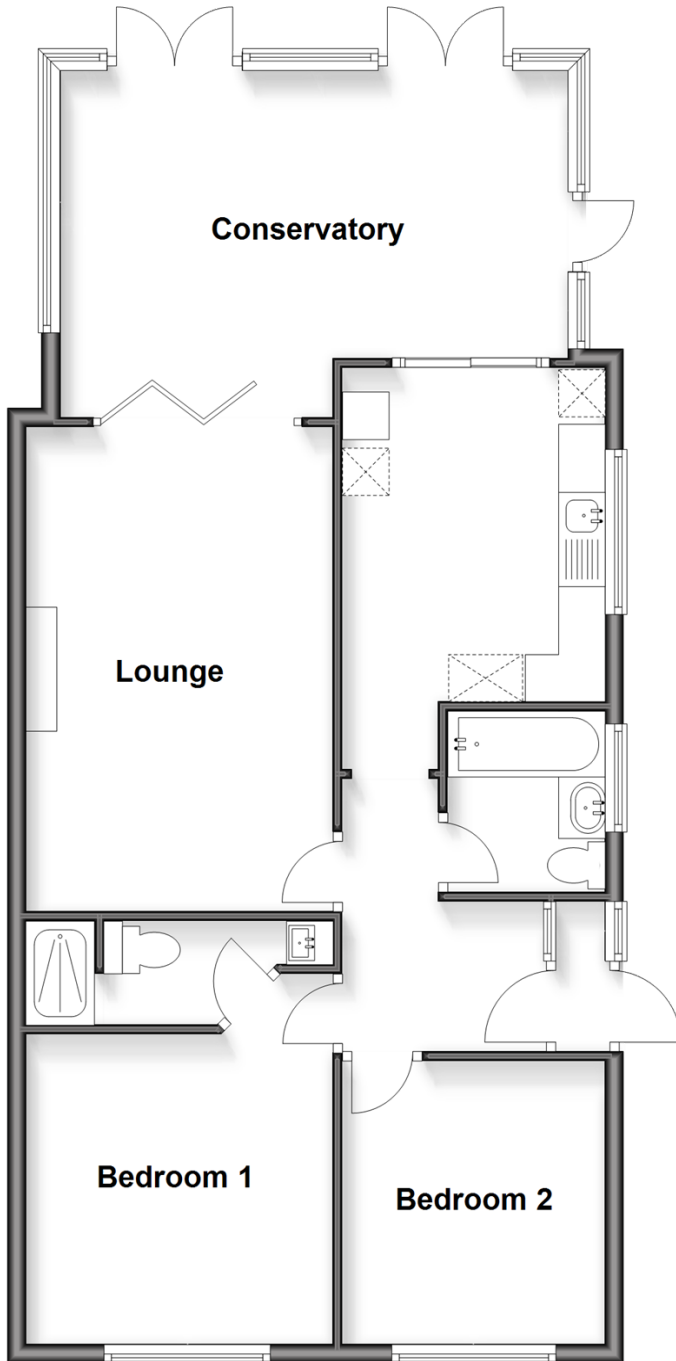
2x  2x  1x 

**Shamrock Avenue,
Whitstable, Kent, CT5**

Wards
Helping you move forwards

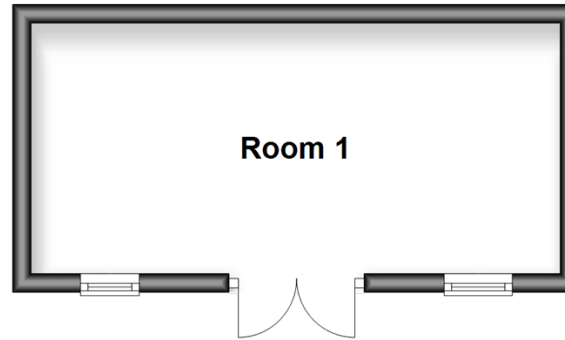
Ground Floor

Approx. 81.5 sq. metres (876.9 sq. feet)



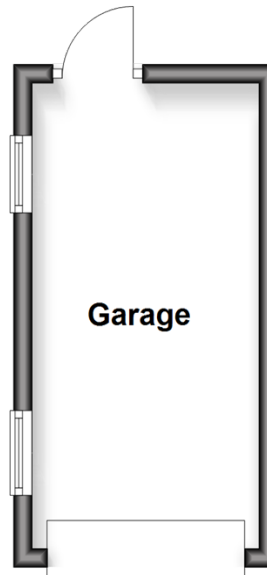
Outbuilding 2

Approx. 15.1 sq. metres (162.6 sq. feet)



Outbuilding 1

Approx. 12.0 sq. metres (129.0 sq. feet)



Accommodation

GROUND FLOOR

Entrance Hallway

Bedroom 2: 9'10 x 9'3 (3.00m x 2.82m)

Bedroom 1: 10'11 x 10'10 (3.33m x 3.30m)

Ensuite Shower Room

Bathroom: 11'8 x 9'3 (3.56m x 2.82m)

Kitchen : 11'11 x 9'2 (3.63m x 2.80m)

Lounge: 16'11 x 10'11 (5.16m x 3.33m)

Conservatory : 18'8 x 10'11 (5.69m x 3.33m)

OUTSIDE

Outbuilding/Workshop: 18'7 x 8'9 (5.67m x 2.67m)

Garage

Rear Garden

Driveway



Main features

- Chain-free
- Large conservatory
- Garage and driveway with a secure courtyard area beside the bungalow
- Outbuilding and decking provide a great outdoor space
- En-suite Shower Room to Bedroom 1

Nearest Schools

Primary Schools: Joy Lane Primary 0.4 miles, Whitstable Junior School 0.9 miles, Whitstable and Seasalter Endowed C of E Junior School 1.0 miles

Secondary School: The Whitstable School 1.2 miles

Transport Information

Train Stations: Whitstable 1.3 miles, Chestfield & Swalecliffe 2.6 miles, Herne Bay 4.8 miles

Address

Shamrock Avenue, Whitstable, Kent, CT5

Directions

For directions to this property please contact us.



Wards
Helping you move forwards

Call Whitstable Branch 01227 772272 ■ wardsofkennt.co.uk



■ Legal advice should be taken to verify fixtures/fittings, planning, alterations and/or lease details ■ Appliances & services are untested, dimensions are approximate and floor plans are not to scale



12033798/20260103/NF/NF