



## 110 Manor Forstal

- Lovely Link Detached Four Bedroom House
- Two reception Rooms
- Gas central Heating
- Double Glazing Throughout
- South Facing Rear Garden
- Double Garage & Drive at End of Garden
- End of Chain

Price Guide  
£495,000





**PRICE RANGE: £495,000 - £500,000.** A truly delightful link detached four bedroom family house occupying a lovely position on the highly sought after neighbourhood of Manor Forstal. Excellent living accommodation with double garage at the end of a secluded south facing rear garden.

Everything you need to create a fantastic family home in a sought after location. The accommodation includes: entrance hallway, downstairs cloakroom, good size lounge/diner, fitted kitchen, family room/study, four bedrooms and upstairs shower room.

Outside there is a lovely south facing rear garden with direct access to a double garage with power and light.

New Ash Green benefits from local facilities which include local shops, doctor and dental surgeries, health clinic, primary school and nurseries, access to grammar and secondary schools, public library. Bus services to main line railway station at Longfield offering services to London as well as a commuter coach service to London. There are road links from this area giving access to A2/M2, A20/M20, M25 and Dartford Tunnel. The major features are the close proximity to Bluewater Shopping Complex and Ebbsfleet International Station with high speed link to Paris and St Pancras International Station.

**Tenure: Freehold**





Council Tax Band: E

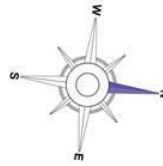
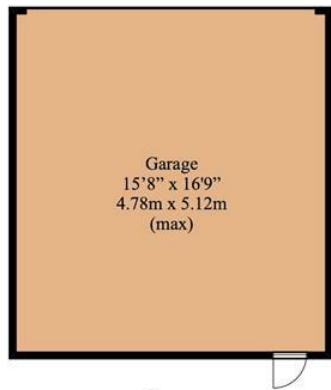
Fixtures and fittings by arrangement other than those mentioned.

Residents Society Fees and Village Association Fees apply to properties in New Ash Green, please ask for further information or contact New Ash Green Village Association directly for figures.



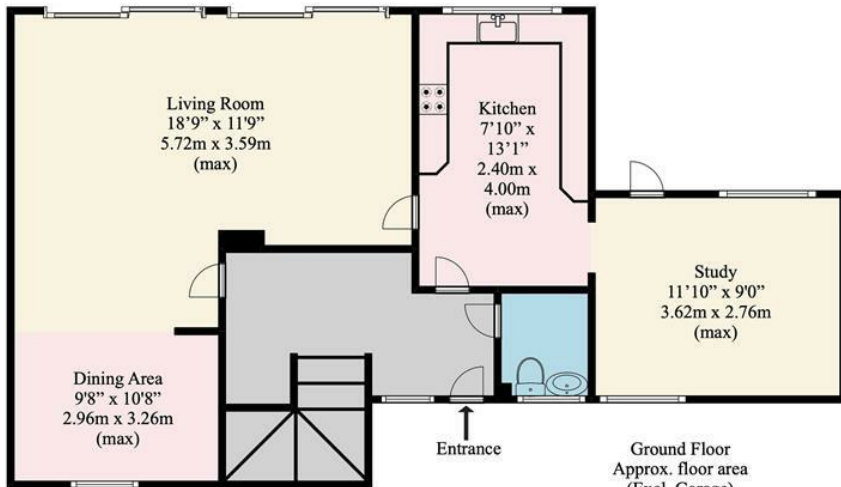




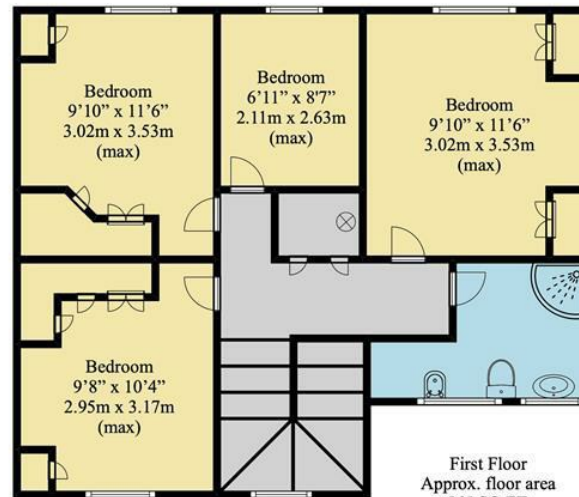


Approx. total floor area  
(Excl. Garage)  
1,237 SQ.FT.  
114.99 SQ.M.

Garage  
263 SQ.FT.  
24.47 SQ.M.



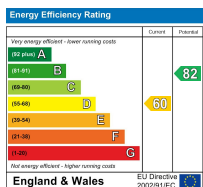
Ground Floor  
Approx. floor area  
(Excl. Garage)  
672 SQ.FT.  
62.49 SQ.M.



First Floor  
Approx. floor area  
565 SQ.FT.  
52.50 SQ.M.

**Disclaimer**

This floorplan is for illustrative purposes only. We do not accept responsibility for any errors or omissions. The depicted appliances have not been tested, and their operability or efficiency is not guaranteed. Measurements are approximate and not to scale and not precise, and may have been taken from the widest area including wardrobes and storage spaces. Garages and outbuildings may not be represented in their actual location in relation to the property. Buyers are advised to take their own measurements and compass reading. Internal measurements and total areas should be verified, as their accuracy is not guaranteed.



Appliances and services are untested. Dimensions are approximate and floorplans are not to scale. Fixtures and fittings, planning and alterations, lease details if applicable, should all be verified legally.

Open: Monday-Friday 9am-5.30pm  
Saturday 9am-5pm

**4 The Row, New Ash Green  
Kent DA3 8JG**

**1 The Parade, Wrotham Road  
Meopham, Kent DA13 0JL**

**01474 815811 / 871555**

info@hartleyestates.com  
www.hartleyestates.com

