



Price

£90,000

Leasehold

1x  1x  1x 

**Calverley Court,
Kingston Road, Epsom,
Surrey, KT19**

OVER 60?

Secure this property
for up to **59% less!**

cubitt & west
Helping you move forwards



Main features

- First-floor retirement apartment (over 60s)
- Bright lounge/diner with compact fitted kitchen
- Large bedroom with built-in wardrobes
- Residents' lounge, laundry, guest suite and communal gardens
- Chain Free

Accommodation

FIRST FLOOR

Entrance

Kitchen: 7'6 x 7'2 (2.29m x 2.19m)

Lounge: 22'9 x 10'10 (6.94m x 3.30m)

Bedroom 1: 13'6 x 9'2 (4.12m x 2.80m)

Bathroom

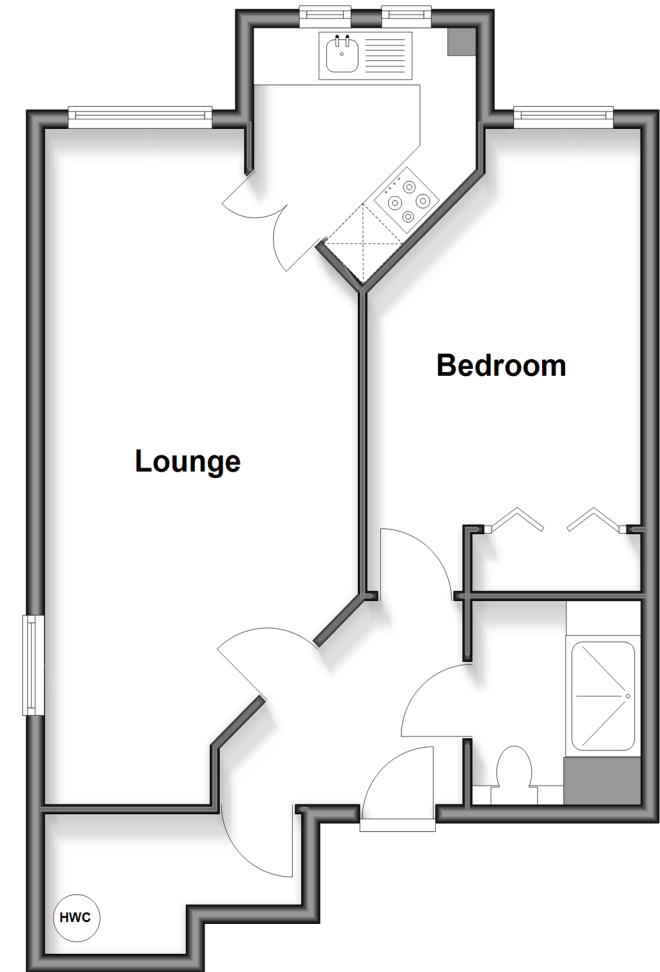
OUTSIDE

Communal Gardens

Parking (first come basis)

First Floor

Approx. 51.9 sq. metres (558.8 sq. feet)



Call Banstead - 01737 352233 ■ cubittandwest.co.uk

- If buying to rent, please check if Local Authority licensing schemes apply before proceeding
- Through a Homewise Home For Life Plan people aged 60+ can secure this property for up to 59% less, by purchasing a Lifetime Lease



20110328/20260610/CFE/LE