



Oxford Road

Queens Park, NW6

£2,250 per month
(£519.23 per week)

This modern two bedroom apartment is situated on the top floor within this period conversion. The property comprises; spacious open plan reception room, two bedrooms and three piece modern bathroom suite.



Oxford Road

Queens Park, NW6

- Top Floor Period Conversion
- Newly Refurbished Throughout, Contemporary Kitchen & Bathroom
- Two Double Bedrooms & High Ceilings
- Close To Kilburn Park Road

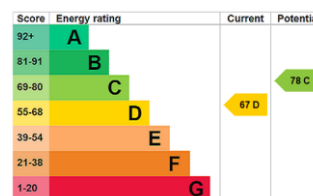


This modern two bedroom apartment is situated on the top floor within this period conversion. The property comprises; spacious open plan reception room, two bedrooms and three piece modern bathroom suite.

This newly refurbished apartment further benefits; wooden flooring, high ceilings, spacious accommodation and an abundance of natural light.

Oxford Road is ideally situated moments from Kilburn Park underground station and located close to local amenities.

Minimum Term: 12 months
Deposit Required: 5 weeks
Local Authority: London Borough of Brent
Council Tax Band: C
EPC Rating: D
Unfurnished

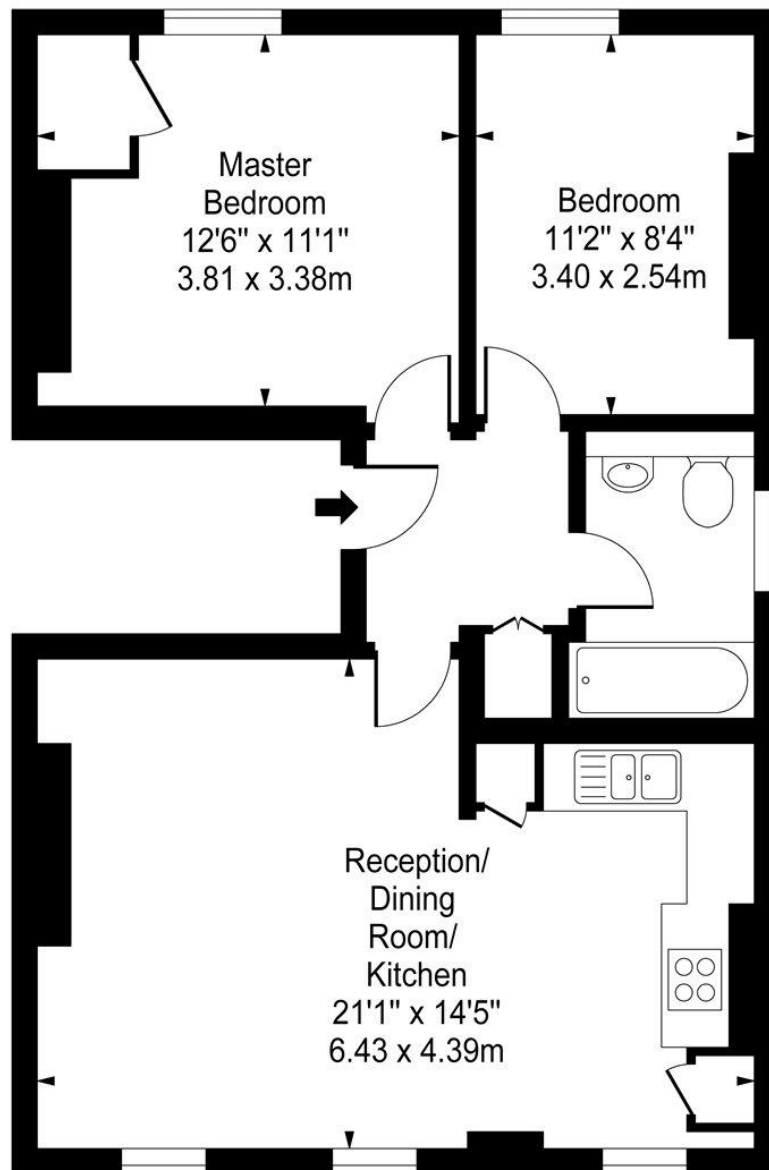
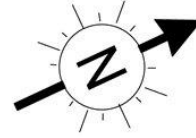


Chestertons Little Venice Lettings

26 Clifton Road
Maida Vale
London
W9 1SX
littlevenicelettingsusers@chestertons.co.uk
02072662369
chestertons.co.uk

Additional tenant charges apply (fees apply to non-AST tenancies only)
Tenancy Agreement Fee: £300
References per Tenant/Guarantor: £60
Inventory check (approx. £100 – £250 inc. VAT)
chestertons.co.uk/property-to-rent/applicable-fees

Oxford Road, NW6



Second Floor

Approx Gross Internal Area **628 Sq Ft - 58.34 Sq M**

For Illustration Purposes Only - Not To Scale

www.goldlens.co.uk

Ref. No. 001193

