

SOLIHULL RESIDENTIAL LETTINGS



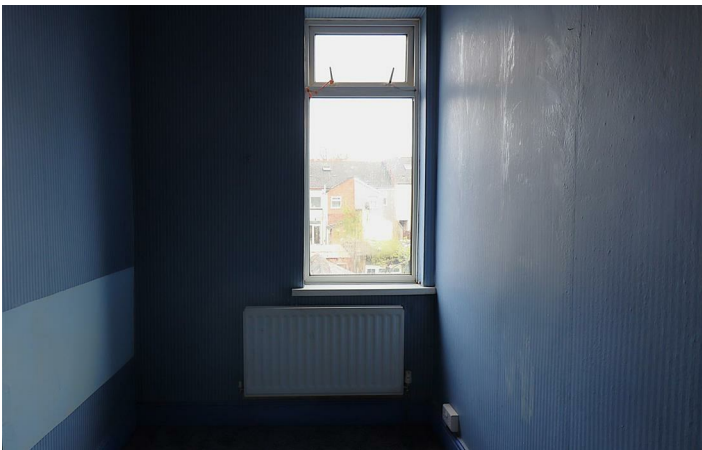
21 Rosefield Road Smethwick, B67 6DU

Well presented unfurnished terraced house set on well regarded residential neighbourhood.

Entrance Hall
Living room
Family Room
Kitchen
Bathroom
3 Bedrooms (2 double)
Garden

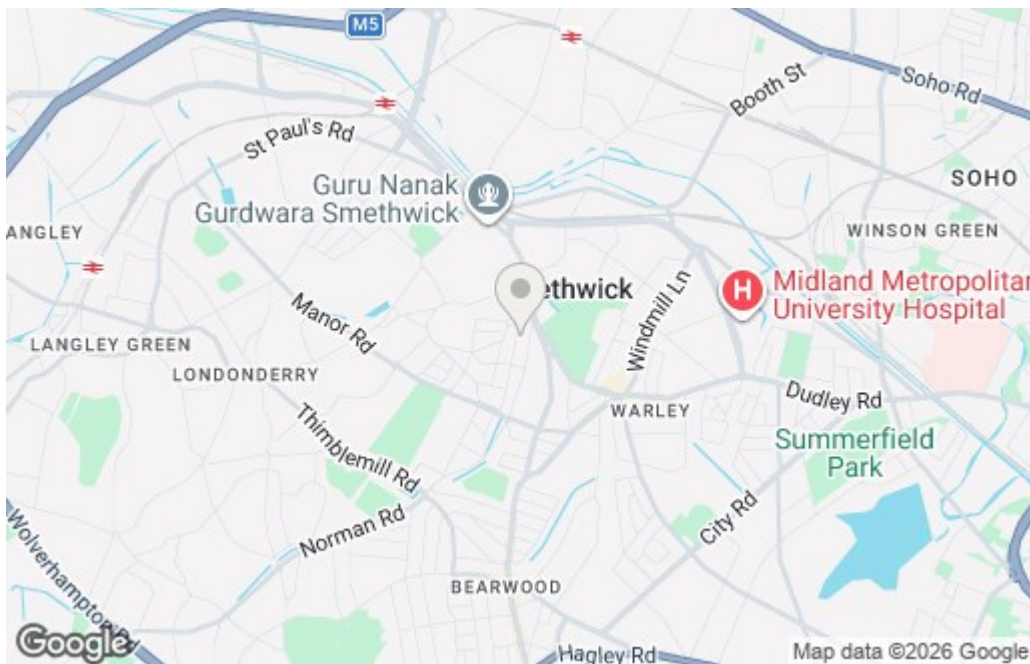
£1,095



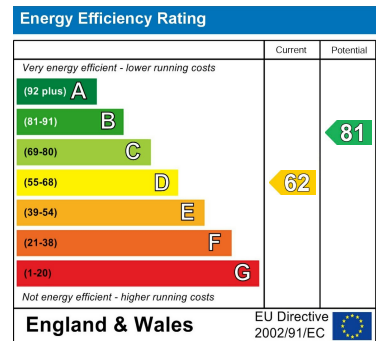


Floor Plan

Area Map



Energy Efficiency Graph



These particulars, whilst believed to be accurate are set out as a general outline only for guidance and do not constitute any part of an offer or contract. Intending purchasers should not rely on them as statements of representation of fact, but must satisfy themselves by inspection or otherwise as to their accuracy. No person in this firm's employment has the authority to make or give any representation or warranty in respect of the property.

Zenith House, Highlands Road, Solihull, B90 4PD

Tel: 01217112222 Email: info@solihullresidential.com www.solihullresidential.com

