



Roch Street, Rochdale, OL16

£1,285 Per Month

Sited next to the River Roch, Brookside Grange is a development of 102 properties in Rochdale within easy reach of everything you need for work, play and education.

The Ellesmere is a stunning home built with your needs in mind. Downstairs, there is a generous living room, hallway and WC. The rear of the property has a magnificent living/kitchen area with a range of contemporary fitted units with integrated appliances. The room has French windows opening onto and overlooking the rear garden as well as a series of skylights which flood the room with light – an ideal space for both family time and entertaining.

Upstairs there is a spacious family bathroom complete with a bath and shower, a master bedroom with fitted, mirrored wardrobes and two further well-proportioned bedrooms. At the top of the stairs you will also find a handy store cupboard.

Within walking distance of half a dozen secondary schools, and 21 Good or Outstanding primaries within three miles of the site, quality education is easily accessible from the site.

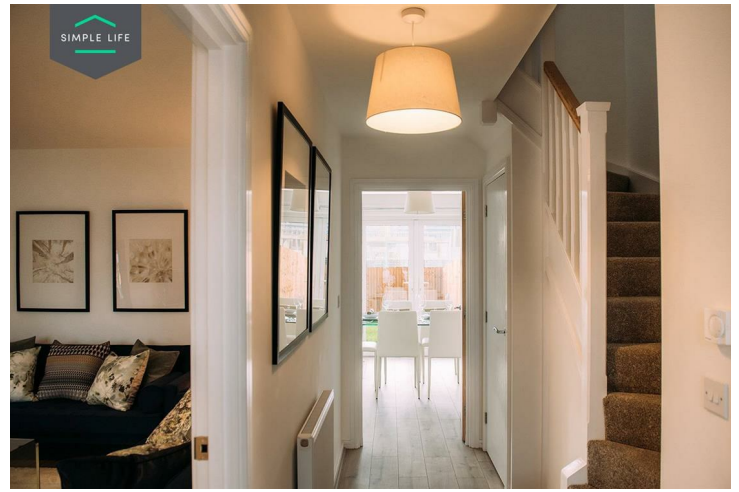
Being just off the A58 close to the Town Centre, Brookside Grange is only nine miles from Manchester city itself. The surrounding areas include Asda and Iceland supermarkets, whilst two leisure centres are within a mile, perfect for fitness and pastimes.

With direct buses to Rochdale and associated Metrolink and Rail Links, regional travel is easily achieved with the West Yorkshire cities of Bradford and Leeds also within reach for excellent connectivity. The rail stations of Smithy Bridge and Rochdale are also nearby for wider travel.

Use postcode OL16 2NB, with the development sitting on the corner of Roch Street and Albert Royds Street.

Deposit £1480
Holding Deposit £290
Council Tax B
Unfurnished
Available 6th July 2026





Key Features

- Private driveway
- Fitted wardrobes to master bedroom
- Washing/drying machine
- Modern, white kitchen units
- Patio area in the private back garden
- Security alarm system
- Integrated kitchen appliances
- Light wash wood effect flooring
- Light grey carpets in the bedrooms and stairs
- White blinds in bedrooms

Location

