



📍 16 Bramble Drive, Chippenham, Wiltshire, SN15 3PH

🔗 Price Guide £469,950

Situated within the popular Pewsham residential development, this is a rare opportunity to acquire a spacious five-bedroom detached home with garage and driveway parking.

- Five Bedroom Detached Family Home
- Self Contained Ground Floor Annexe, Ideal for Multi-Generational Living
- Situated in the Popular Pewsham Development
- Walking Distance to Local Amenities including Tesco, Primary School, and Healthcare Facilities
- Garage and Driveway Parking for Two Vehicles
- Spacious Living Room with Feature Fireplace
- Four First Floor Bedrooms
- Family Bathroom with Shower Over Bath
- Private, Enclosed Rear Garden

🏠 Freehold

📊 EPC Rating D



Positioned within the sought-after Pewsham residential development, this impressive five-bedroom detached home presents a rare opportunity, featuring a self-contained ground floor annexe alongside a garage and off-road parking.

The house offers a welcoming entrance hall, a comfortable living room with a feature fireplace, a downstairs cloakroom, and a well-proportioned kitchen/dining room. The kitchen includes a utility/kitchen area, which also serves the annexe and benefits from its own external access.

The annexe itself comprises a living room with direct access to the rear garden, a bedroom, and an en-suite shower room.

Upstairs, the property features four bedrooms and a family bathroom fitted with a shower over the bath.

Externally, the front of the property provides driveway parking for two vehicles leading to a single garage. To the rear, there is a private, enclosed garden.

Ideal for family living, the property is conveniently situated within walking distance of local amenities, including Tesco, a primary school, public house, doctor's surgery and pharmacy. The town centre and mainline train station are also just a short drive away, making it perfectly suited to modern family life.

#### **Situation**

The property is located within Pewsham residential development which has a local primary school, a mini supermarket, public house, chemist, doctors surgery and Chinese takeaway. Pewsham is only a short distance from the town and all amenities which include a public library and the pleasant Monkton Park with a nine hole golf course and riverside walks and cycleways. There is convenient pedestrian access to the mainline railway station (London Paddington - approx. 75 minutes). The M4 motorway, the A4 and the A420 offer excellent motor commuting to the major centres of Bath, Bristol, Swindon & London. There is a good choice of private schooling and Chippenham also offers excellent secondary schools and primary schools, together with further education at Wiltshire College.

#### **Property Information**

Council Tax Band; D

Freehold

Mains Electricity, Water & Drainage

Gas Central Heating

EPC Rating; D



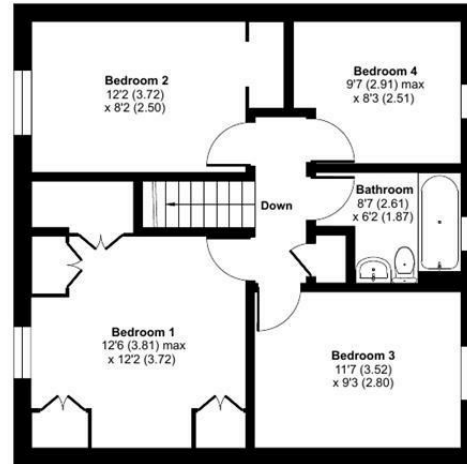
## Bramble Drive, Chippenham, SN15

Approximate Area = 1479 sq ft / 137.4 sq m

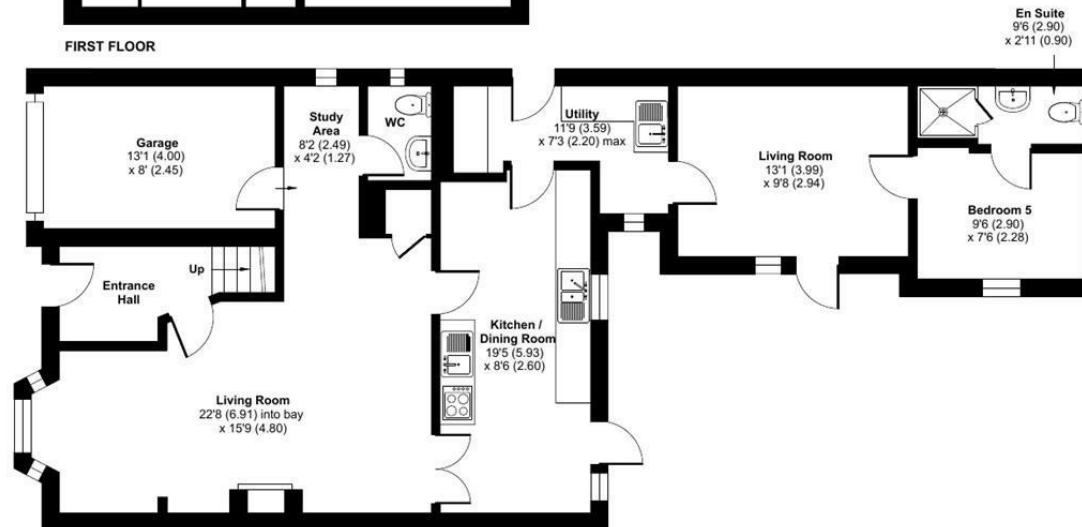
Garage = 106 sq ft / 9.8 sq m

Total = 1585 sq ft / 147.2 sq m

For identification only - Not to scale



FIRST FLOOR



GROUND FLOOR

 Floor plan produced in accordance with RICS Property Measurement 2nd Edition, Incorporating International Property Measurement Standards (IPMS2 Residential). © ntechcom 2026. Produced for Strakers. REF: 1453845

Disclaimer These particulars, whilst believed to be accurate are set out as a general outline only for guidance and do not constitute any part of an offer or contract. Intending purchasers should not rely on them as statements of representation of fact, but must satisfy themselves by inspection or otherwise as to their accuracy. No person in this firm's employment has the authority to make or give any representation or warranty in respect of the property. All measurements and distances are approximate only. Your home is at risk if you do not keep up repayments on a mortgage or other loan secured on it.