



St. Marys Terrace, Middleton, KING'S LYNN, PE32 1RD

welcome to

St. Marys Terrace, Middleton, KING'S LYNN

Located in Middleton which has a primary school and a local convenience store and the well known Middleton Steak House is this well presented three bedroom semi detached house with a large kitchen/breakfast room and a good size rear garden.



Entrance Door To:-

Entrance Hall

Stairs to first floor

Lounge

13' 10" x 10' 1" (4.22m x 3.07m)

Double glazed bay window, Parquet flooring, feature fireplace, door to:-

Breakfast Kitchen

17' 3" x 12' 3" (5.26m x 3.73m)

Range of base and wall units, roll edge work top, inset sink with mixer tap over, built-in oven, electric hob, extractor over, space for dishwasher, fridge freezer, floor standing boiler, kickboard lighting, wood effect laminate floor, double glazed window, fireplace with inset wood burner, opening to:-

Rear Lobby

Exit door to rear

Shower Room

Walk-in shower cubicle, low level WC, wash hand basin with cupboard below, upright radiator, double glazed window

First Floor Landing

Loft access, double glazed window

Bedroom One

10' 3" x 13' 11" (3.12m x 4.24m)

Double glazed window, radiator, feature ornate fireplace

Bedroom Two

12' 3" x 8' 3" (3.73m x 2.51m)

Double glazed window, radiator, storage

Bedroom Three

8' 11" x 8' 7" (2.72m x 2.62m)

Double glazed window, radiator

Outside

To the front is a gravel drive giving off road parking for 3/4 cars. Side gate gives access to the good size rear garden which is laid mainly to lawn with mature shrubs and plants. There is a garden shed and the whole garden is enclosed by timber fencing. Field views to the rear



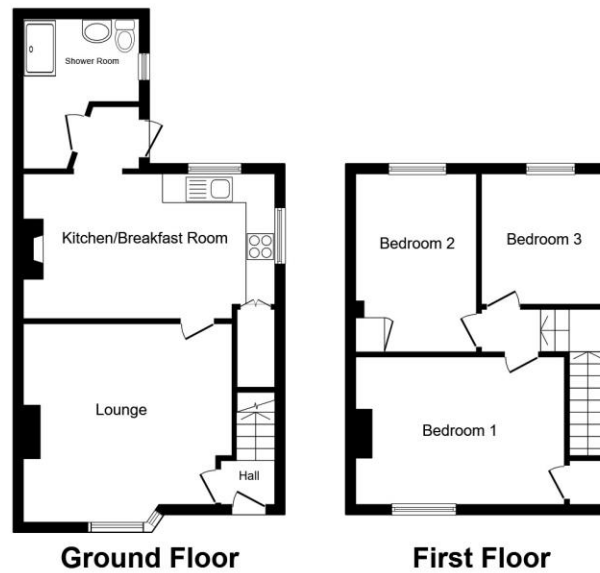
check out more properties at williamhbrown.co.uk



welcome to
St. Marys Terrace, Middleton,
KING'S LYNN

- Semi Detached House
- Three Bedrooms
- Large Breakfast Kitchen
- Good Size Rear Garden
- Ample Off Road Parking

Tenure: Freehold EPC Rating: D
 Council Tax Band: A



£250,000

Total floor area 80.8 m² (869 sq.ft.) approx
 This floor plan is for illustrative purposes only. It is not drawn to scale. Any measurements, floor areas (including any total floor area), openings and orientation are approximate. No details are guaranteed, they cannot be relied upon for any purpose and they do not form part of any agreement. No liability is taken for any error, omission or misstatement. A party must rely upon its own inspection(s). Powered by www.propertybox.io

**william
h brown**



Please note the marker reflects the
 postcode not the actual property

check out more properties at williamhbrown.co.uk



Property Ref:
 KLN119549 - 0003

1. MONEY LAUNDERING REGULATIONS Intending purchasers will be asked to produce identification documentation at a later stage and we would ask for your co-operation in order that there is no delay in agreeing the sale. 2. These particulars do not constitute part or all of an offer or contract. 3. The measurements indicated are supplied for guidance only and as such must be considered incorrect. Potential buyers are advised to recheck measurements before committing to any expense. 4. We have not tested any apparatus, equipment, fixtures or services and it is in the buyers interest to check the working condition of any appliances. 5. Where an EPC, or a Home Report (Scotland only) is held for this property, it is available for inspection at the branch by appointment. If you require a printed version of a Home Report, you will need to pay a reasonable production charge reflecting printing and other costs. 6. We are not able to offer an opinion either written or verbal on the content of these reports and this must be obtained from your legal representative. 7. Whilst we take care in preparing these reports, a buyer should ensure that his/her legal representative confirms as soon as possible all matters relating to title including the extent and boundaries of the property and other important matters before exchange of contracts.

William H Brown is a trading name of Sequence (UK) Limited which is registered in England and Wales under company number 4268443, Registered Office is Cumbria House, 16-20 Hockliffe Street, Leighton Buzzard, Bedfordshire, LU7 1GN. VAT Registration Number is 500 2481 05.



01553 771337



KingsLynn@williamhbrown.co.uk



40-42 King Street, KING'S LYNN, Norfolk, PE30 1ES



williamhbrown.co.uk