



Chippenham Road, W9

£623 Per week

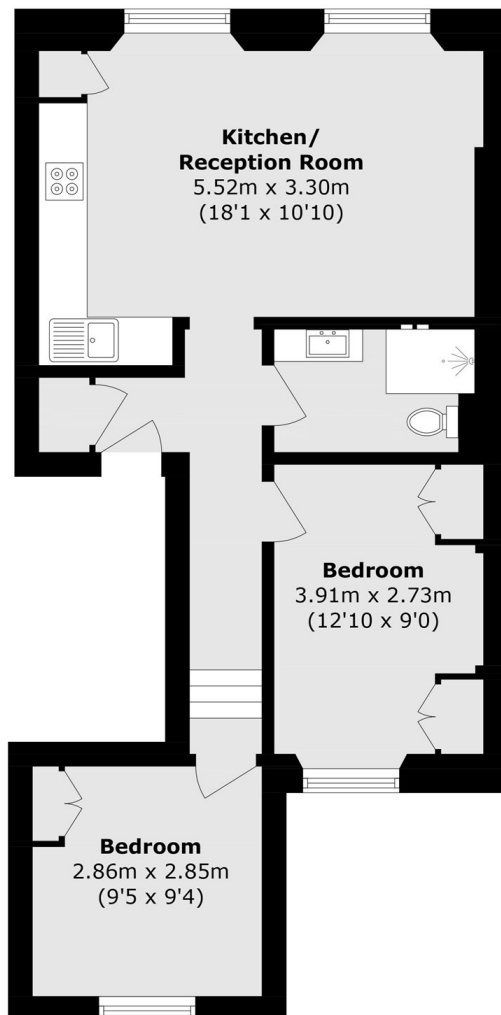
Set on the second floor of a period conversion is this newly decorated two bedroom flat. The property is presented in good condition throughout and comprises a spacious, open-plan kitchen-living space, two double bedrooms with ample storage and a modern bathroom.

Chippenham Road is ideally situated for the local shops, bars, restaurants and transport links of both Maida Vale and Queens Park.

Features

- Two Double Bedrooms
- Ample Storage
- Period Features
- Naturally Bright
- Newly Decorated
- Great Location

Chippenham Road, London, W9



Second Floor

Total area (approx.): 51.2 sq. m (551.1 sq. ft)