



13 Tallow Wharf, Bircherley Green , Hertford, SG14 1FF

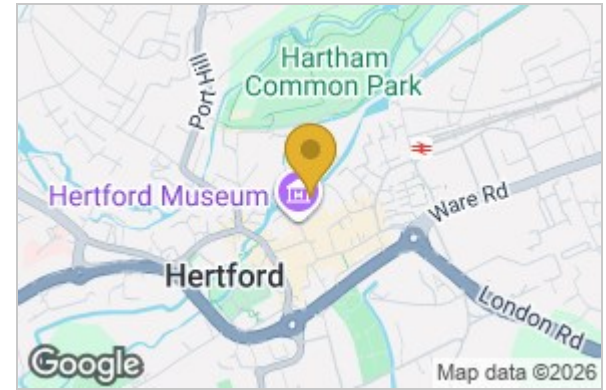
£400,000



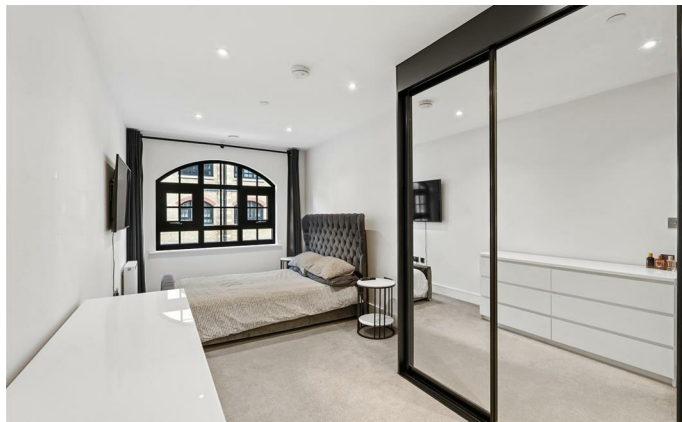
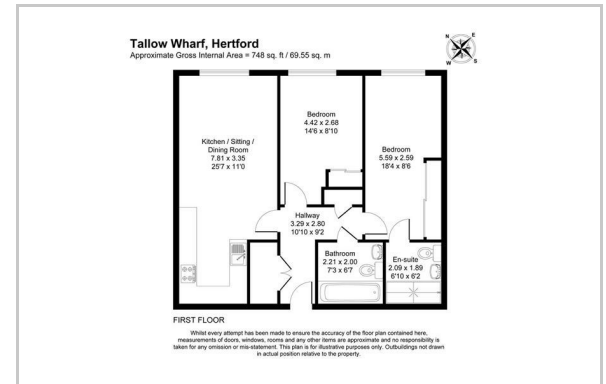
# 13 Tallow Wharf Bircherley Green, Hertford, SG14 1FF

Greenhill Estates are delighted to present Tallow Wharf, a spectacular two-bedroom, two-bathroom luxury apartment nestled within the highly acclaimed, award-winning Lea Wharf development. AVAILABLE CHAIN FREE, this nearly-new property offers an exceptional opportunity to acquire a premium slice of contemporary riverside living right in the heart of Hertford's vibrant historic town centre. Built in late 2023 by the acclaimed developer Chase New Homes, the property has been crafted to the absolute highest standards and still carries the peace of mind of its remaining 10-year structural warranty. Spanning an impressive 748 square feet of impeccably designed internal space, this first-floor apartment flawlessly merges striking warehouse-style architecture with the peak of modern, high-specification luxury. The current owner has also enhanced the apartment past its original builder spec including an advanced, fully integrated water softener system. Representing the absolute pinnacle of turnkey, town-centre living, an internal viewing is highly recommended to truly appreciate the sheer quality and unique position of this home.

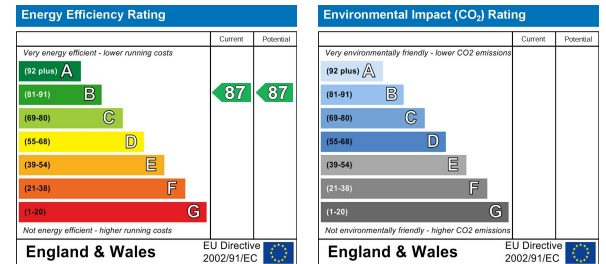
## Area Map



## Floor Plan



## Energy Efficiency Graph



These particulars, whilst believed to be accurate are set out as a general outline only for guidance and do not constitute any part of an offer or contract. Intending purchasers should not rely on them as statements of representation of fact, but must satisfy themselves by inspection or otherwise as to their accuracy. No person in this firm's employment has the authority to make or give any representation or warranty in respect of the property.