



Tower Court, Saltmarshe Castle Park, Nr Bromyard, Herefordshire

£185,000

🛏 2 🚿 2 🛋 2



- Detached Park Home Bungalow
- OMAR Regency Design(45'x20')
- Kitchen With Utility Room
- Breath-taking Views Over Fields
- Decked Area To The Rear
- Two Double Bedrooms
- Spacious Lounge/Dining Room
- Study
- Home Comes Furnished
- Garden and Driveway

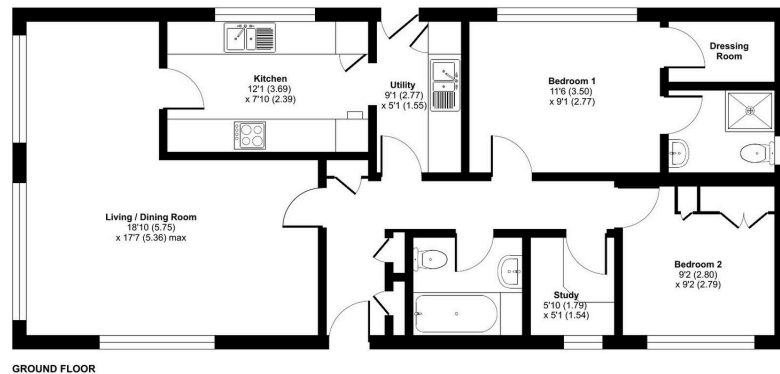


A superbly presented two double bedroom detached park home located close to the entrance of a sought after residential park close to Bromyard in Herefordshire. For those that want to live and appreciated the countryside then this is the home for you! Not only is the home spacious, bright and airy but has breathtaking countryside views to the rear which can be appreciated from the home and the decked area at the rear. The home has a study, kitchen with utility, an ensuite to the master bedroom as well as a further guest bathroom, a further enclosed garden outside as well as a driveway with parking for two cars. The furniture in the home can be left if required.



Stouport Road, Tedstone Wafre, Bromyard, HR7

Approximate Area = 850 sq ft / 78.9 sq m
For identification only - Not to scale



Floor plan produced in accordance with RICS Property Measurement 2nd Edition, incorporating International Property Measurement Standards (IPMS2 Residential). © redcomm 2023. Produced for The Park Home Agency Ltd. REF: 1288063



01793 230185
sales@theparkhomeagency.co.uk

Agents Notes: All measurements are approximate and quoted in metric with imperial equivalents and for general guidance only and whilst every attempt has been made to ensure accuracy, they must not be relied on. The fixtures, fittings and appliances referred to have not been tested and therefore no guarantee can be given that they are in working order. Internal photographs are reproduced for general information and it must not be inferred that any item shown is included with the property. For a free valuation, contact the numbers listed on the brochure