

for sale

offers over **£240,000**



Kingsland Avenue Northampton NN2 7PP

Offered to the market with **NO UPWARD CHAIN** is this three bedroom semi-detached property in the a popular area of Kingsthorpe, ideally located for local amenities and Northampton Train Station. Viewing is highly advised to fully appreciate.



Kingsland Avenue Northampton NN2 7PP

Entrance Hall

Enter via a double glazed door to the front elevation. Doors lead off to the living room, downstairs shower room and open plan kitchen/dining room. Tiled floor, wall mounted radiator and stairs rising to the first floor landing.

Downstairs Shower Room

Three piece suite comprising tiled shower, low level flush wc. and wash hand basin. UPVC opaque double glazed window to the side elevation and tiled floor and walls.

Living Room

11' 9" plus bay x 10' 10" (3.58m plus bay x 3.30m)
UPVC double glazed bay window to the front elevation. Wall

mounted radiator and laminate flooring.

Kitchen/ Dining Room

20' 1" x 10' 8" max (6.12m x 3.25m max)

L-Shaped Room - Fitted kitchen with a range of wall and base level units. Sink and drainer set into the work surfaces with tiling to splash back areas. Integrated appliances comprise oven, microwave and five ring gas hob with cooker hood over. Plumbing for washing machine and space for fridge/freezer. Wall mounted radiator, tiled floor and space for a dining table and chairs. UPVC double glazed French doors to the rear elevation leading out to the rear garden, and UPVC double glazed window to the rear elevation.

First Floor Landing

Stairs rise from the entrance hall. Doors leading to three



bedrooms and the family bathroom. UPVC double glazed window to the side elevation.

Bedroom One

11' 8" x 10' 10" (3.56m x 3.30m)

UPVC double glazed window to the front elevation and wall mounted radiator.

Bedroom Two

10' 8" x 10' 11" into recess (3.25m x 3.33m into recess)

UPVC double glazed window to the rear elevation and wall mounted radiator.

Bedroom Three

8' 4" max x 8' 10" (2.54m max x 2.69m)

UPVC double glazed window to the rear elevation and wall mounted radiator.

Family Bathroom

Three piece suite comprising panelled bath with shower over, low level flush wc and vanity wash hand basin with storage below. Chrome heated towel rail and UPVC opaque double glazed window to the side elevation.

Outside

Front Garden

Off road parking, grassed area and door to the side porch providing access to the rear garden.

Rear Garden

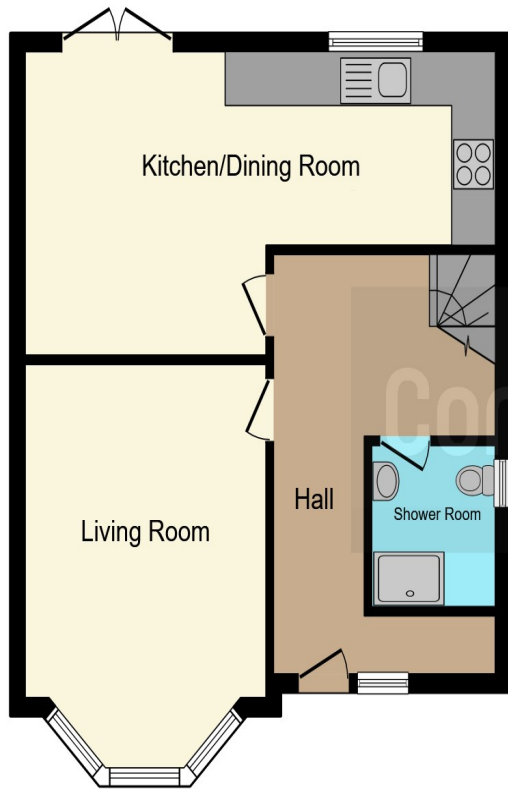
Lawned garden leading up to the Garden Room at the rear of the garden. Walled to one side and door to side porch providing

access to the front of the house.

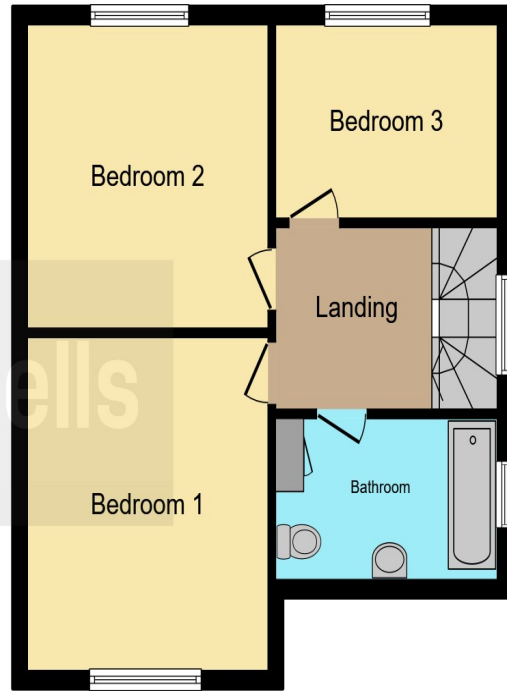
Council Tax Band

B





Ground Floor



First Floor

This floor plan is for illustrative purposes only. It is not drawn to scale. Any measurements, floor areas (including any total floor area), openings and orientation are approximate. No details are guaranteed, they cannot be relied upon for any purpose and they do not form part of any agreement. No liability is taken for any error, omission or misstatement. A party must rely upon its own inspection(s). Powered by www.focalagent.com

To view this property please contact Connells on

T 01604 716 655
E kingsthorpe@connells.co.uk

87 Harborough Road KINGSTHORPE
 NORTHAMPTON NN2 7SL

Property Ref: KTP407793 - 0004

Tenure:Freehold EPC Rating: D

Council Tax Band: B

view this property online connells.co.uk/Property/KTP407793



1. MONEY LAUNDERING REGULATIONS Intending purchasers will be asked to produce identification documentation at a later stage and we would ask for your co-operation in order that there will be no delay in agreeing the sale. 2. These particulars do not constitute part or all of an offer or contract. 3. The measurements indicated are supplied for guidance only and as such must be considered incorrect. Potential buyers are advised to recheck measurements before committing to any expense. 4. We have not tested any apparatus, equipment, fixtures, fittings or services and it is in the buyers interest to check the working condition of any appliances.

Connells Residential is registered in England and Wales under company number 1489613, Registered Office is Cumbria House, 16-20 Hockliffe Street, Leighton Buzzard, Bedfordshire, LU7 1GN. VAT Registration Number is 500 2481 05.

see all our properties at www.connells.co.uk | www.rightmove.co.uk | www.zoopla.co.uk