



Gatliff Close, SW1W

£700,000

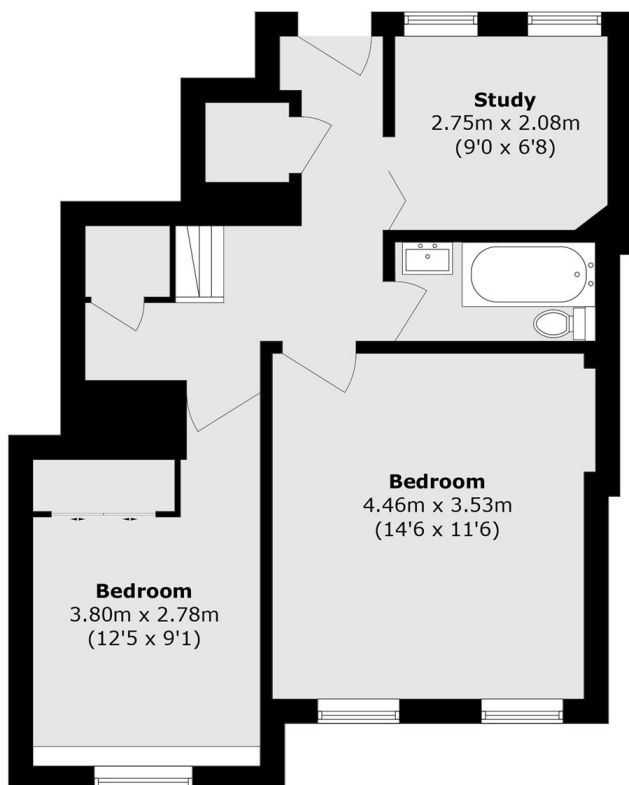
A beautifully redesigned apartment measuring over 800sqft. Flooded with light and benefitting from a separate study as well as two bedrooms, this apartment would make an ideal London base or rental investment.

Gatliff Close is ideally located on Ebury Bridge Road. Victoria Train Station, Sloane Square and the green spaces of Battersea Park, as well as Battersea Power Station are all within walking distance.

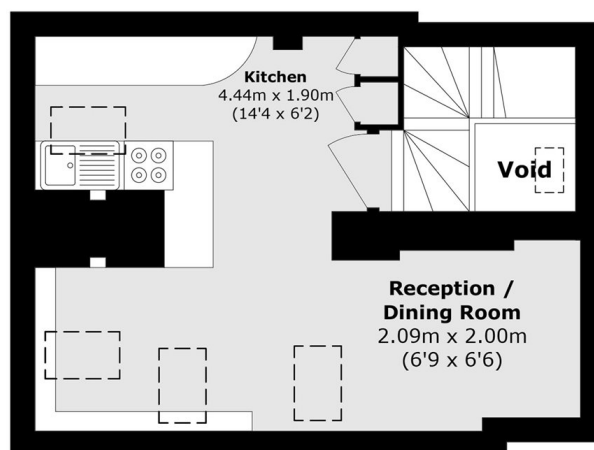
Features

- Lift
- Two Bedrooms
- Separate Study
- Popular Location
- Leasehold
- Fantastic Condition

Gatliff Close, London, SW1W



Third Floor



Fourth Floor

Total area (approx.): 82.2 sq. m (884.8 sq. ft)
(Excluding Void)