



53 West Park Drive, Macclesfield, SK10 3FW
Offers in excess of £320,000

ENTRANCE HALL

Stairs to first floor, laminate flooring

CLOAKROOM WC

Low level wc, wash hand basin

KITCHEN AREA

Double glazed window to front, fitted with matching floor and wall units, integrated appliances, tiled surrounds

LIVING DINING ROOM

Double glazed doors to rear gardens, wood laminate flooring, storage cupboard

FIRST FLOOR LANDING

Access to all rooms

BEDROOM

Double glazed window, carpet flooring

BEDROOM

Double glazed window, carpet flooring

BEDROOM

Double glazed window, carpet flooring

BATHROOM

Matching white bathroom suite with tiled surrounds

SECOND FLOOR LANDING

Access to main bedroom

MAIN BEDROOM

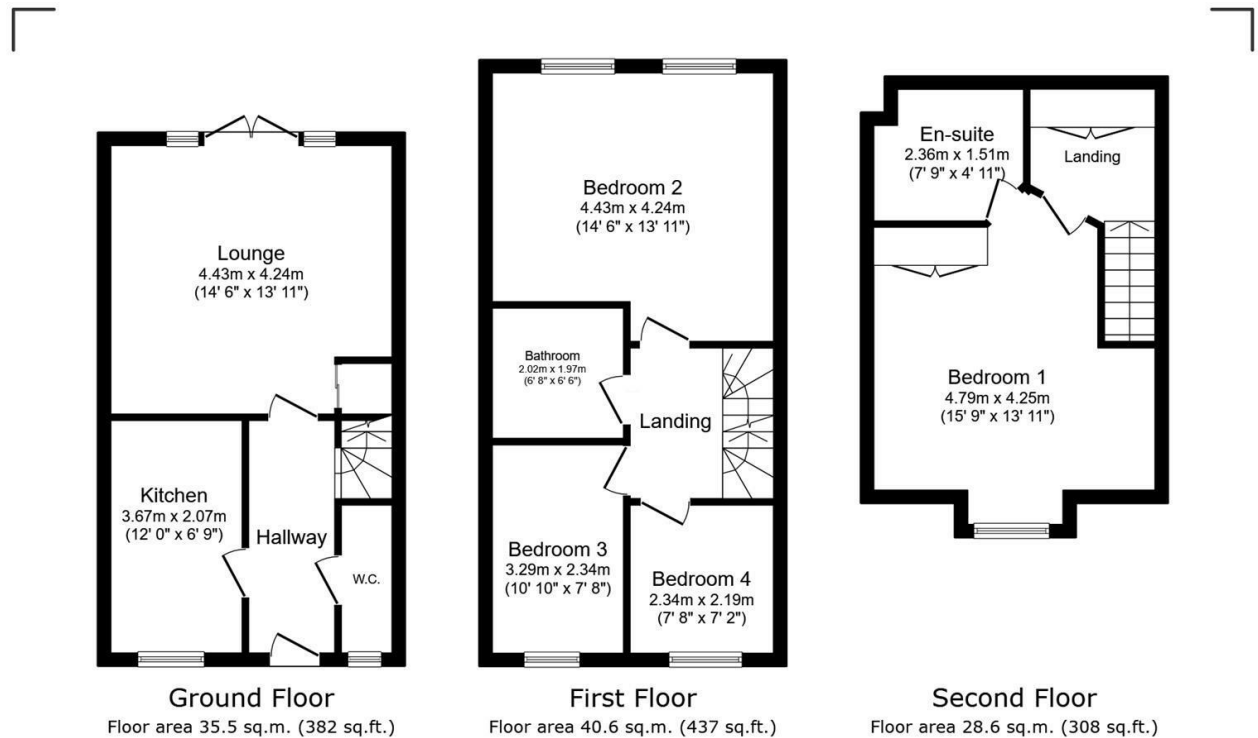
Double glazed velux windows, carpet flooring fitted wardrobe cupboards

EN SUITE

Shower enclosure, low level wc, wash hand basin, tiled surrounds

OUTSIDE

The rear gardens provide high degrees of privacy and are fully enclosed with gated side access. Allocated parking for two vehicles



Total floor area: 104.7 sq.m. (1,127 sq.ft.)

This floor plan is for illustrative purposes only. It is not drawn to scale. Any measurements, floor areas (including any total floor area), openings and orientations are approximate. No details are guaranteed, they cannot be relied upon for any purpose and do not form any part of any agreement. No liability is taken for any error, omission or misstatement. A party must rely upon its own inspection(s). Powered by www.Propertybox.io