



Connells

Ryder Way
Flitwick Bedford



Property Description

Connells are delighted to bring to market this impressive and contemporary five-bedroom family home which offers generous, well-planned accommodation designed for modern living.

The property is approached via multiple off road parking spaces and welcomes you into a spacious entrance hall, setting a refined tone from the outset. The recently re-decorated lounge provides a stylish yet comfortable space to relax, while a downstairs cloakroom adds everyday practicality. A dedicated home office/study offers the ideal environment for remote working or quiet study, a highly desirable feature for today's lifestyle.

At the heart of the home lies a superb open plan kitchen and dining area, perfectly suited for family life and entertaining alike. The space flows seamlessly through to the enclosed, low maintenance rear garden, creating a wonderful indoor-outdoor connection and an ideal setting for summer gatherings, children's play or alfresco dining.

The first floor continues to impress with five well-proportioned bedrooms, two of which benefit from private en-suite shower rooms, providing comfort and convenience for family members or guests. The remaining bedrooms are served by a contemporary family bathroom, finished to a high standard.

Flitwick is a highly regarded Bedfordshire town, popular with families and commuters alike, offering an excellent range of local amenities, well regarded schools, and outstanding transport links.

Entrance/ Hallway

Double glazed door and double-glazed window to front aspect. Radiator. Under stair storage.

Cloak Room

Low level wc, hand wash basin, hand towel radiator.

Kitchen / Diner

19' 9" x 16' 4" MAX (6.02m x 4.98m MAX)
Wall to base fitted units, easy clean work surfaces, sink with drainer, integrated oven with extractor fan above, breakfast bar, integrated appliances, spot lights to ceiling. Double glazed windows either side of double glazed patio doors to garden. Double glazed window to side aspect.

Living Room

20' x 12' 7" (6.10m x 3.84m)
Double glazed windows to side, front and rear aspects. Access to rear garden via double glazed doors to rear aspect. Radiator.

Study

7' 1" x 9' 7" (2.16m x 2.92m)
Double glazed window to front aspect. Radiator.

First Floor

Landing

Double glazed windows to side aspect. Radiator. Loft access. Access to bedrooms and family bathroom

Bedroom 1

15' 4" x 14' 8" MAX (4.67m x 4.47m MAX)
Radiator. Double glazed window to rear aspect. Built in storage.

En Suite

Hand was basin. low level wc, shower cubicle, spotlights to ceiling.

Bedroom 2

12' 5" x 8' 8" (3.78m x 2.64m)
Radiator. Double glazed window to rear aspect.

En Suite

Shower cubicle. hand wash basin. low level wc, spotlights to ceiling.

Bedroom 3

12' 4" MAX x 7' 8" (3.76m MAX x 2.34m)
Radiator. Double glazed window to front aspect.

Bedroom 4

9' 7" x 7' 1" (2.92m x 2.16m)
Radiator. Double glazed window to front aspect.

Bedroom 5

9' 9" x 7' MAX (2.97m x 2.13m MAX)
Radiator. Double glazed window to front aspect.

Bathroom

Frosted Double glazed window to side aspect. Low level wc, hand wash basin. Bath with shower over, spotlights to ceiling. Heated towel radiator.

Outside

Garage

Converted garage.

Front Garden

Additional exterior garden space to front and side with mature plants and shrubs.

Rear Garden

Enclosed garden with patio area. astro turf lawn. Side gate access to driveway,

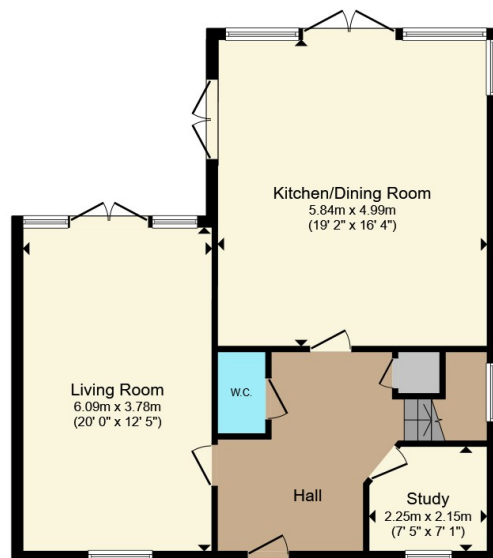
Parking

Driveway for multiple vehicles.

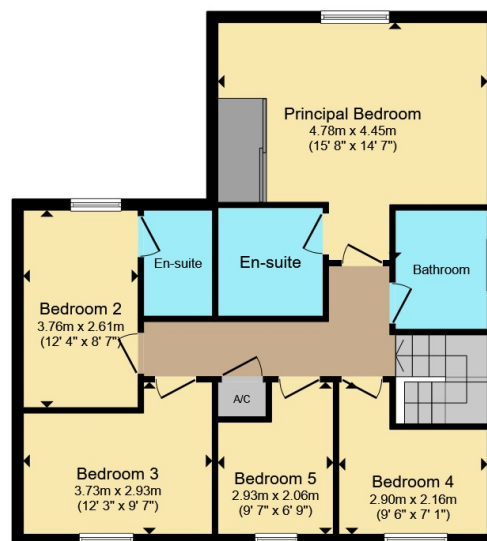




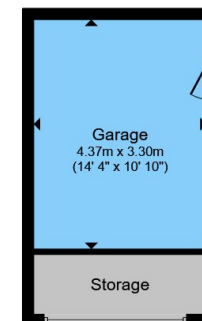




Ground Floor



First Floor



Outbuilding

Total floor area 163.7 m² (1,762 sq.ft.) approx

This floor plan is for illustrative purposes only. It is not drawn to scale. Any measurements, floor areas (including any total floor area), openings and orientation are approximate. No details are guaranteed, they cannot be relied upon for any purpose and they do not form part of any agreement. No liability is taken for any error, omission or misstatement. A party must rely upon its own inspection(s). Powered by www.propertybox.io



To view this property please contact Connells on

T 01525 712 271
E flitwick@connells.co.uk

Unit 9 Russell Centre Coniston Road Flitwick
 BEDFORD MK45 1QY

EPC Rating: B Council Tax
 Band: F

Tenure: Freehold

view this property online connells.co.uk/Property/FLI305809



1. MONEY LAUNDERING REGULATIONS Intending purchasers will be asked to produce identification documentation at a later stage and we would ask for your co-operation in order that there will be no delay in agreeing the sale. 2. These particulars do not constitute part or all of an offer or contract. 3. The measurements indicated are supplied for guidance only and as such must be considered incorrect. Potential buyers are advised to recheck measurements before committing to any expense. 4. We have not tested any apparatus, equipment, fixtures, fittings or services and it is in the buyers interest to check the working condition of any appliances.

Connells Residential is registered in England and Wales under company number 1489613, Registered Office is Cumbria House, 16-20 Hockliffe Street, Leighton Buzzard, Bedfordshire, LU7 1GN. VAT Registration Number is 500 2481 05.

See all our properties at www.connells.co.uk | www.rightmove.co.uk | www.zoopla.co.uk

Property Ref: FLI305809 - 0006