



Guide Price
£210,000

Leasehold

2x  1x  1x 

**Watermill Court,
Springwell, Havant,
Hampshire, PO9**

OVER 60?

Secure this property
for up to **59% less!**

cubitt & west
Helping you move forwards



Main features

- 2 bedroom ground floor retirement flat
- Located in the heart of Havant town centre
- Secure gated development
- Communal lounge area
- A few minutes walk to cafe's and shops
- Close to Havant train station
- Resident and visitors parking

Accommodation

GROUND FLOOR

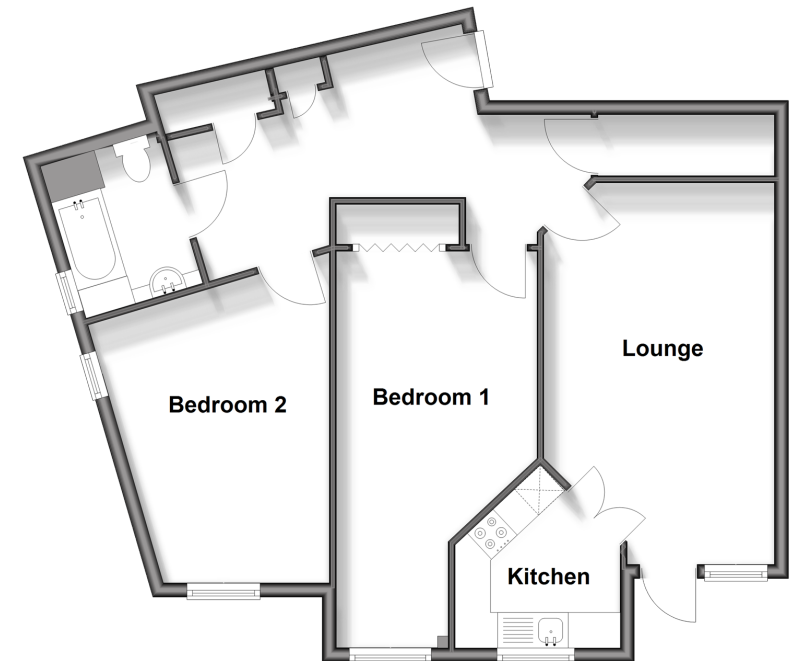
Hallway
Lounge: 18'3 x 10'7 (5.57m x 3.23m)
Kitchen: 7'8 x 7'6 (2.34m x 2.29m)
Bedroom 1: 21'2 x 9'3 (6.46m x 2.82m)
Bedroom 2: 12'6 x 9'9 (3.81m x 2.97m)
Bathroom

OUTSIDE

Communal Gardens
Resident and Visitors Parking

Ground Floor

Approx. 69.5 sq. metres (747.8 sq. feet)



Call Havant - 023 92492708 ■ cubittandwest.co.uk

■ Legal advice should be taken to verify fixtures/fittings, planning, alterations and/or lease details
■ Through a Homewise Home For Life Plan people aged 60+ can secure this property for up to 50% less, by purchasing a Lifetime Lease.

■ Appliances & services are untested, dimensions are approximate and floor plans are not to scale



41129522/20251008/JG/JG