

Aldreds
Estate Agents



11 Somerleyton Road

Lowestoft, NR32 4RB

Asking Price £225,000



11 Somerleyton Road

Lowestoft, NR32 4RB

Aldreds are delighted to offer this charming semi-detached character home, superbly situated in a highly desirable area of North Lowestoft, within Somerleyton Road. Dating from the turn of the century, this attractive property beautifully combines period charm with modern comforts and is presented to a good standard throughout. The spacious and versatile accommodation begins with a welcoming wide entrance hall featuring a galleried staircase rising to the first floor. There is a generous lounge, perfect for relaxing, along with a separate dining room ideal for entertaining. The modern fitted kitchen offers ample storage and workspace. To the first floor, there are two well-proportioned double bedrooms and a family bathroom. Outside, the property benefits from a stoned driveway to the front providing ample off-road parking for multiple vehicles. To the rear, there is a beautifully maintained lawned garden, offering a pleasant outdoor space for relaxation and entertaining. Additional benefits include sealed unit double glazing and modern electric high-retention storage heating to the ground floor. Offered with no onward chain, this rarely available home presents an excellent opportunity to acquire a character property in one of North Lowestoft's most sought-after locations. Early viewing is strongly recommended.

Wide Entrance Hall

Fitted carpet, coved ceiling, under stair storage cupboard, galleried staircase leading on to the first floor.

Lounge

15'9" x 9'2" (4.82 x 2.8)

Fitted carpet, coved ceiling, sealed unit double glazed window, high retention storage heater, power points, T.V point, wide opening leading to dining room.

Dining Room

9'1" x 15'3" (2.78 x 4.67)

Fitted carpet, coved ceiling, power points, high retention storage heater, double Upvc patio doors leading out to the rear garden, opening leading to the kitchen.

Kitchen

7'4" x 8'2" (2.25 x 2.5)

Timber effect vinyl flooring, full range of modern fitted kitchen units, extended work surfaces, double stainless steel sink with single drainer, eye level double electric oven with matching four burner ceramic hob, power points, recess for fridge/freezer, plumbing for washing machine, Upvc window, tiled splash backs.

First Floor

Central galleried landing, fitted carpet, loft access leading to insulated loft space.





Bedroom 1

15'3" x 9'10" (4.65 x 3.01)

Fitted carpet, coved ceiling, power points, sealed unit double glazed window.

Bedroom 2

15'3" x 8'8" (4.67 x 2.65)

Fitted carpet, sealed unit double glazed window, power points, coved ceiling.

Family Bathroom

Ceramic tiled flooring, bathroom suite comprising of a panel bath, low level W.C, pedestal sink, half tiled walls, velux style window, full length cupboard housing the hot water tank.

Outside To The Front

There is a wide driveway providing ample off road parking for a variety of vehicles, range of flower and shrub borders which is all enclosed by brick walls and low level fencing.

Outside To The Rear

There is a beautifully presented lawned garden with enclosed verandah, range of flower and shrub borders, timber and felt garden shed, pedestrian rear access.

Tenure

Freehold

Services

Mains water, electricity, drainage.

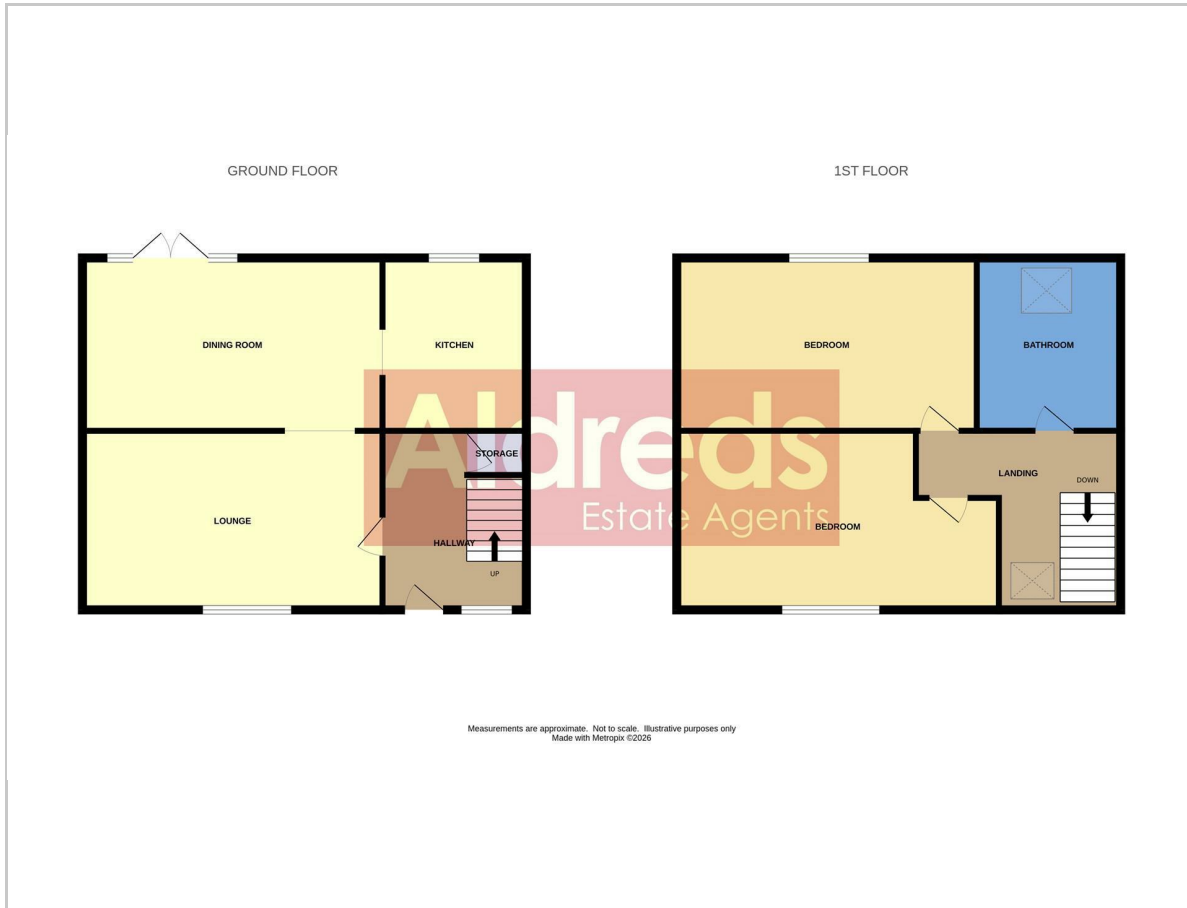
Council Tax

Band 'B'

Ref: L2554/02/25



Floor Plan



Viewing

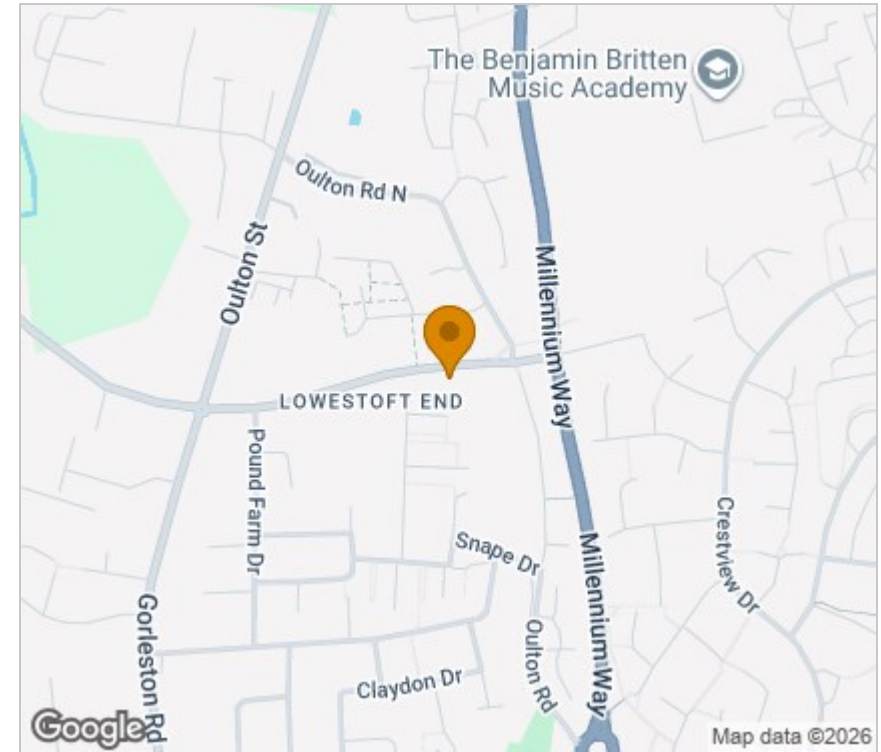
Please contact our Aldreds Lowestoft Office on 01502 565432 if you wish to arrange a viewing appointment for this property or require further information.

Disclaimer

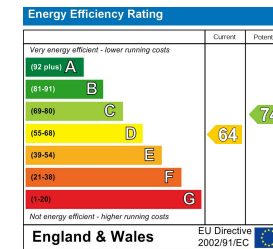
These particulars are issued on an understanding that all negotiations shall be conducted through Messrs. Aldreds. Please note: Messrs. Aldreds for themselves and for the vendors or lessors of this property whose agents they are given notice that: 1. Particulars are set out as a general outline only for guidance of intending purchasers or lessees, and do not constitute nor constitute part of, an offer or contract. 2. All descriptions, dimensions, references to condition and necessary permissions for use and occupation, and other details are given without responsibility and any intending purchasers or tenants should not rely on them as statements or representations of fact but must satisfy themselves by inspection or otherwise as to the correctness of each of them. 3. No person in the employment of Messrs. Aldreds has any authority to make or give any representation or warranty whatever in relation to this property. 4. If you are proposing to visit the property and are travelling some distance please check with Aldreds on the issue of availability prior to travelling. 5. Aldreds Property Consultants and associated services may offer additional services to the prospective purchaser for which they will be entitled to receive a commission.

Aldreds are pleased to be working with Mortgage Advice Bureau. They're an award-winning mortgage broker with over 1,400 advisers across the UK, and have access to over 12,000 mortgage products from over 90 lenders. Aldreds Estate Agents Ltd receive a commission of £200 on each completed case. Your home may be repossessed if you do not keep up repayments on your mortgage. There may be a fee for mortgage advice. The actual amount you pay will depend upon your circumstances. The fee is up to 1%, but a typical fee is 0.3% of the amount borrowed. Mortgage Advice Bureau is a trading name of Mortgage Seeker Limited which is an appointed representative of Mortgage Advice Bureau Limited and Mortgage Advice Bureau (Derby) Limited which are authorised and regulated by the Financial Conduct Authority. Mortgage Seeker Limited Registered Office: Lovewell Blake, Sixty Six North Quay, Great Yarmouth, Norfolk, NR30 1HE. Registered in England Number: 03721415. 6. Potential purchasers should check with their providers that the broadband and mobile phone coverage they would require is available.

Area Map



Energy Efficiency Graph



143 London Road North, Lowestoft, Suffolk, NR32 1NE

Tel: 01502 565432 Email: lowestoft@aldreds.co.uk <https://www.aldreds.co.uk/>

Registered in England Reg. No. 08945751 Registered Office: 17 Hall Quay, Great Yarmouth, Norfolk NR30 1HJ

Directors: Mark Duffield B.S.c. FRICS. Dan Crawley MNAEA Paul Lambert MNAEA