



SOUL ESTATES

SALES & LETTINGS

TO LET - 2 BEDROOM HOUSE

Bird Street, Dudley, DY3

£900 PCM

Soul Estates are proud to present this well-presented two-bedroom mid-terraced house To Let, located in the highly sought-after area of Lower Gornal. The property is ideally positioned close to excellent schools, local amenities, and convenient transport links, making it a perfect home for a small family or professional couple.

The ground floor offers an inviting lounge leading through to a family kitchen with a breakfast bar. The kitchen includes a range of matching wall and base units, splashback tiling, and a free-standing gas cooker. Stairs lead to the first-floor landing, which provides access to two bedrooms and a modern family bathroom. The property further benefits from gas central heating, double glazing throughout, and a low-maintenance rear garden.

✓ **PERFECT FAMILY HOME**

✓ **FAMILY BATHROOM**

✓ **2 BEDROOM MIDTHERRACED HOUSE**

✓ **CENTRAL HEATING/ DOUBLE GLAZING**







SOUL ESTATES

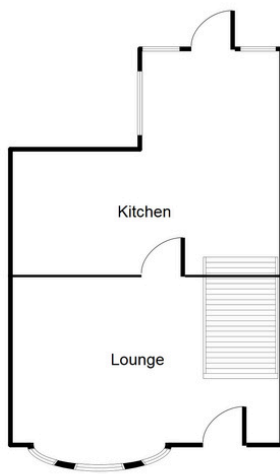
SALES & LETTINGS

TO LET - 2 BEDROOM HOUSE

Bird Street, Dudley, DY3

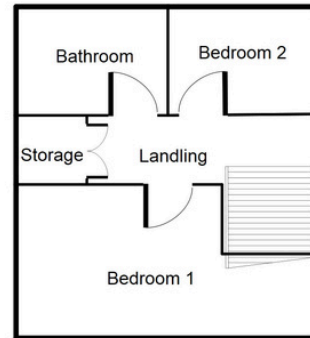
£900 PCM

Ground Floor



This floorplan is just an example, this is not to scale.
Please see description for exact room sizes.
(c) Soul Estates

First Floor



This floorplan is just an example, this is not to scale.
Please see description for exact room sizes.
(c) Soul Estates

Lounge

13' 2" x 12' 4" (4.01m x 3.76m)

Kitchen

10' 9" x 12' 3" (3.27m x 3.73m) Approx

Landing

2' 8" x 10' 6" (0.81m x 3.20m)

Bedroom 1

10' 2" x 12' 4" (3.10m x 3.76m)

Bedroom 2

7' 3" x 6' 7" (2.21m x 2.01m)

Family Bathroom

7' 3" x 5' 5" (2.21m x 1.65m)



SOUL ESTATES
SALES & LETTINGS

CONTACT US

Soul Estates
20 Great Bridge
Tipton
DY4 7HA

0121 647 6779

www.soulestates.co.uk

WWW.SOULESTATES.CO.UK | 0121 647 6779