



Flat 22,
Hedgefield
House Culduthel
Road, Inverness,
IV2 4FN

Offers Over £250,000



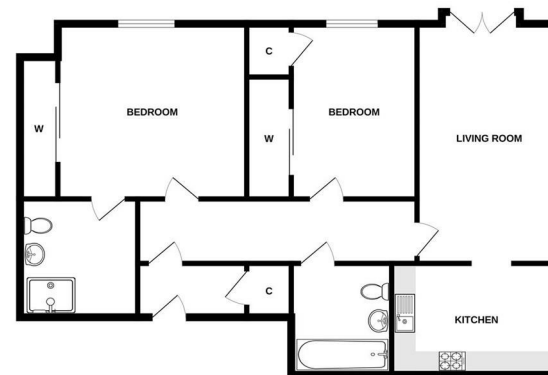
A fantastic opportunity to purchase a ground floor executive apartment in the sought after Hedgefield House development on Culduthel Road. Set back from the road within private grounds, the property is approached via a tree lined driveway and surrounded by beautiful lawns, landscaped gardens and woodland. Apartment 22 is one of only twelve apartments in this block and is accessed via a secure door entry system. The property is decorated in neutral tones and presented in walk in condition throughout. The stylish lounge features French doors offering peaceful woodland views, with space for a small dining table and chairs. The modern kitchen/diner includes integrated appliances: electric hob, oven, combi microwave/oven, extractor, fridge/freezer, dishwasher, and washer/dryer. The principal bedroom benefits from double fitted wardrobes and a spacious ensuite shower room. The second double bedroom also includes double fitted wardrobes and a single cupboard housing the boiler. A well appointed family bathroom with shower over the bath completes the accommodation. Additional features include a hall storage cupboard and a communal store on the second floor, with lift access available. The property has gas central heating, double glazing, and ample private parking to the rear. Residents enjoy beautifully maintained communal grounds.

Viewing is essential to appreciate the quality and setting of this impressive apartment in a highly desirable residential area.

- Immaculate 2 bedroom executive ground floor apartment
- Ideal for professionals, first time buy or downsizers
- Private parking, communal grounds, secure door entry system
- Exclusive development in secluded private grounds
- Lounge, kitchen/diner, 2 bedrooms, ensuite & family bathroom
- EPC Band C



GROUND FLOOR



Whilst every attempt has been made to ensure the accuracy of the floorplan contained here, measurements of actual finished rooms will vary slightly from the information shown and are not intended to be used as a guide for any purpose. The accuracy, systems and appliances shown have not been tested and we guarantee only the appearance of the floorplan as shown.

Extras: Add text here

Services: Add text here

Council Tax: E

Floor Area: 764.24 sq ft

Date of Entry: Add text here

Viewing: Don't delay – get in touch with Tailormade Moves today to arrange a viewing

The Greenhouse Beechwood
Business Park
Inverness
Highland
IV2 3BL

E:
info@tailormademoves.co.uk
T: 01463 233218

