

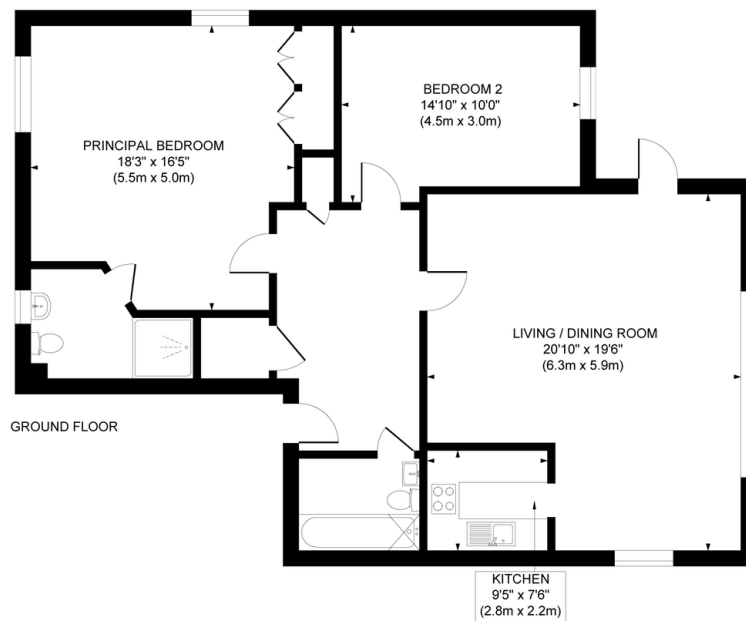
Flat 15, Charter Gate, Boltro Road, £325,000

🛏️ 2 🍴 2 🚿 1



- Close To Haywards Heath Station
- 2 Bedrooms
- 2 Bathrooms
- Ground Floor Apartment
- Allocated Parking
- Long Lease
-
-

Approximate Gross Internal Area
1162 sq. ft / 107.98 sq. m



This plan is for layout guidance only. Not drawn to scale unless stated. Whilst every care is taken in the preparation of this plan, please check all dimensions, shapes and compass bearings before making decisions reliant upon them.

