



2 Dudley Road

Hillsborough, Sheffield, S6 1TB

Guide price £240,000



2 Dudley Road

Hillsborough, Sheffield, S6 1TB

Guide price £240,000



Nestled on Dudley Road in the vibrant area of Hillsborough, Sheffield, this charming semi-detached house presents an excellent opportunity for those seeking a family home with great potential. Boasting two spacious reception rooms, this property offers ample space for both relaxation and entertaining. With three well-proportioned bedrooms, it is perfectly suited for a growing family or those looking to establish a comfortable living environment.

The property features a single bathroom, providing essential amenities for everyday living. One of the standout attributes of this home is the off-road parking, accommodating up to three vehicles, a rare find in this bustling area. The absence of a chain means a swift and straightforward purchase process, allowing you to settle in without delay.

Having been lovingly maintained by the same couple for many years, this house is open for its next chapter. It is an ideal project for those wishing to put their personal touch on a property and create their dream family home. The location is particularly advantageous, with a tram stop, supermarket, restaurants, shops, and cafes all within walking distance, ensuring that daily conveniences are just a stone's throw away.

In summary, this semi-detached house on Dudley Road is a fantastic opportunity for families or individuals looking to invest in a property with character and potential in a thriving community. Don't miss the chance to make this house your home.

Lounge

15' x 12'11" (4.57m x 3.94m)

This inviting lounge features a bay window that floods the room with natural light, enhancing the warm and cozy atmosphere. The neutral carpet and walls provide a calm and welcoming space, complemented by a classic fireplace that serves as a charming focal point. The layout offers ample room for comfortable seating and entertainment, making it ideal for relaxing or socialising.

Kitchen/Dining Room

8'3" x 16'1" (2.51m x 4.91m)

The kitchen/dining room is a practical and functional space, with light wood cabinetry and neutral walls that create a fresh and airy feel. It includes ample storage and workspace, with room for essential appliances and a dining table. The layout allows easy access to the adjacent sun room, making it a pleasant area for meals and everyday family living.

Sun Room

7'1" x 13'10" (2.16m x 4.21m)

The sun room is a bright, airy space with windows on two sides, offering a lovely view of the garden. The carpeted floor and neutral decor make it a comfortable spot to enjoy natural light and outdoor views all year round. It is ideal for relaxing with a book or morning coffee while feeling connected to the garden beyond.

Hallway

The hallway provides a practical entrance to the property, with stairs leading to the first floor. It benefits from neutral walls and carpet flooring, maintaining a consistent and welcoming atmosphere throughout the home.

Landing

The landing at the top of the stairs offers access to all the bedrooms and the shower room. Featuring a window that brings in natural light, it also includes a wooden balustrade and neutral decor for a bright and airy feel.

Bedroom 1

13'10" x 10' (4.21m x 3.04m)

This bedroom is a spacious and comfortable room featuring a bay window that brightens the space with natural light. Fitted wardrobes along one wall provide generous storage, while the neutral tones and carpeted floor create a calm and restful atmosphere.

Bedroom 2

9'2" x 9'11" (2.80m x 3.02m)

A well-proportioned double bedroom with built-in wardrobe space, a window overlooking the rear garden, and neutral décor. This room offers a quiet and cosy retreat with plenty of natural light and space for additional furniture if needed.

Bedroom 3

8'8" x 5'11" (2.65m x 1.80m)

This smaller bedroom features a window to the side elevation and fitted storage cupboards built into the wall. Its compact size makes it ideal for a child's room, study, or home office, with a quiet feel and practical layout.

Shower Room

The shower room is fitted with modern grey-toned tiles and features a walk-in shower enclosure, a wash basin, and a toilet. A frosted window allows for natural light and ventilation, creating a bright and fresh space with contemporary finishes.

Rear Garden

The rear garden is a well-maintained outdoor space that includes an area of artificial lawn bordered by flower beds and shrubs. A paved patio area provides a pleasant spot for seating and alfresco dining, with fencing offering privacy. The garden extends alongside the garage, which is positioned at the rear of the property, making this a peaceful and private outdoor area to enjoy.

Front Exterior

The front exterior presents a traditional semi-detached brick home with a bay window and a driveway leading alongside the property to the rear garage. A garden area with mature shrubbery enhances the kerb appeal.

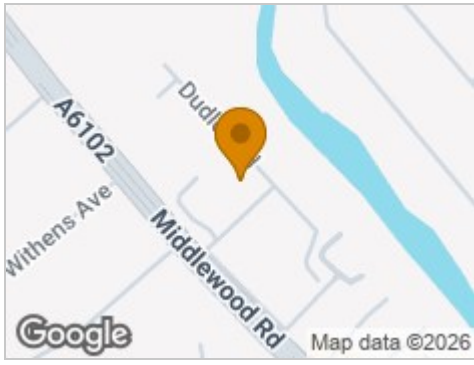
Garage

15'5" x 8'2" (4.70m x 2.48m)

The garage is a single unit located to the rear of the property, fitted with a door and a side window. It offers secure parking or useful storage space and is accessed via the driveway that runs alongside the house.



Road Map



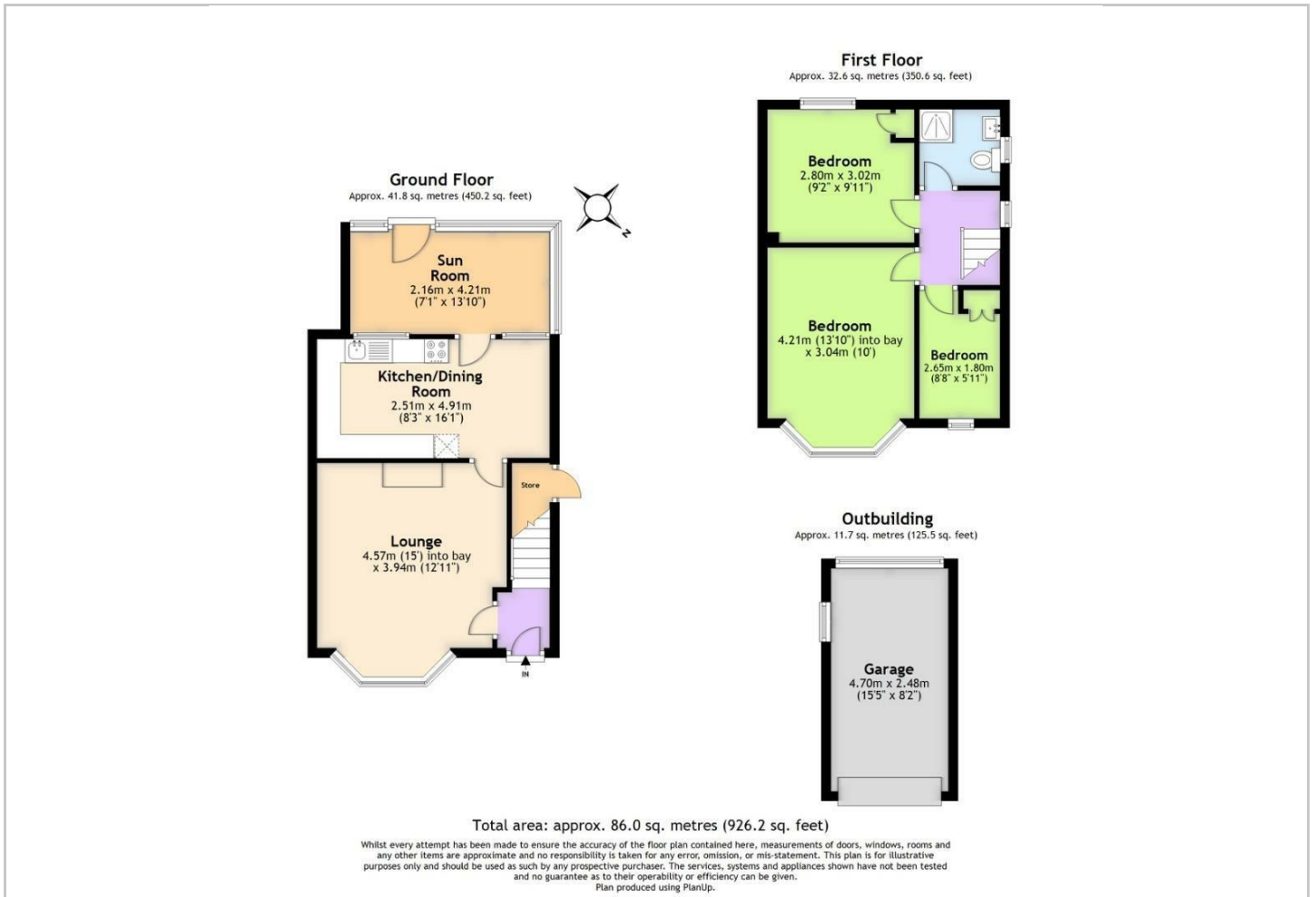
Hybrid Map



Terrain Map



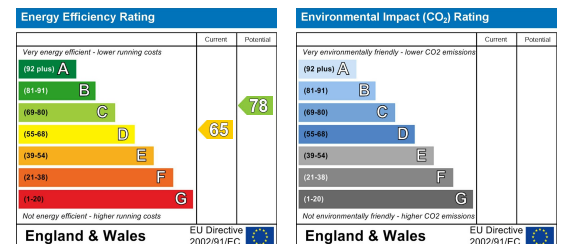
Floor Plan



Viewing

Please contact our JPM Estate Agents Ltd Office on 01226610606 if you wish to arrange a viewing appointment for this property or require further information.

Energy Efficiency Graph



These particulars, whilst believed to be accurate are set out as a general outline only for guidance and do not constitute any part of an offer or contract. Intending purchasers should not rely on them as statements of representation of fact, but must satisfy themselves by inspection or otherwise as to their accuracy. No person in this firm's employment has the authority to make or give any representation or warranty in respect of the property.