



Stukeley Street, Covent Garden
£1,650 pw

› 3 Bedrooms › 2 Bathroom › Furnished

TAVISTOCKBOW
RESIDENTIAL



- › Three double bedrooms
- › Two shower rooms
- › Split level 3rd & 4th floors
- › Private terrace
- › Direct lift access
- › Furnished
- › Available immediately
- › Interior designed
- › Newly refurbished
- › Close to Holborn & Covent Garden stations



A truly stunning three bedroom, two shower room penthouse apartment located on the 3rd & 4th floors with a fantastic terrace. The flat benefits from direct lift access and a large double open plan kitchen reception room. The flat has been furnished to an

exceptionally high standard. Available immediately.

WHAT WE LOVE:

Interior designed
Electronic blinds
Interior designed
Direct lift access
Quiet location.





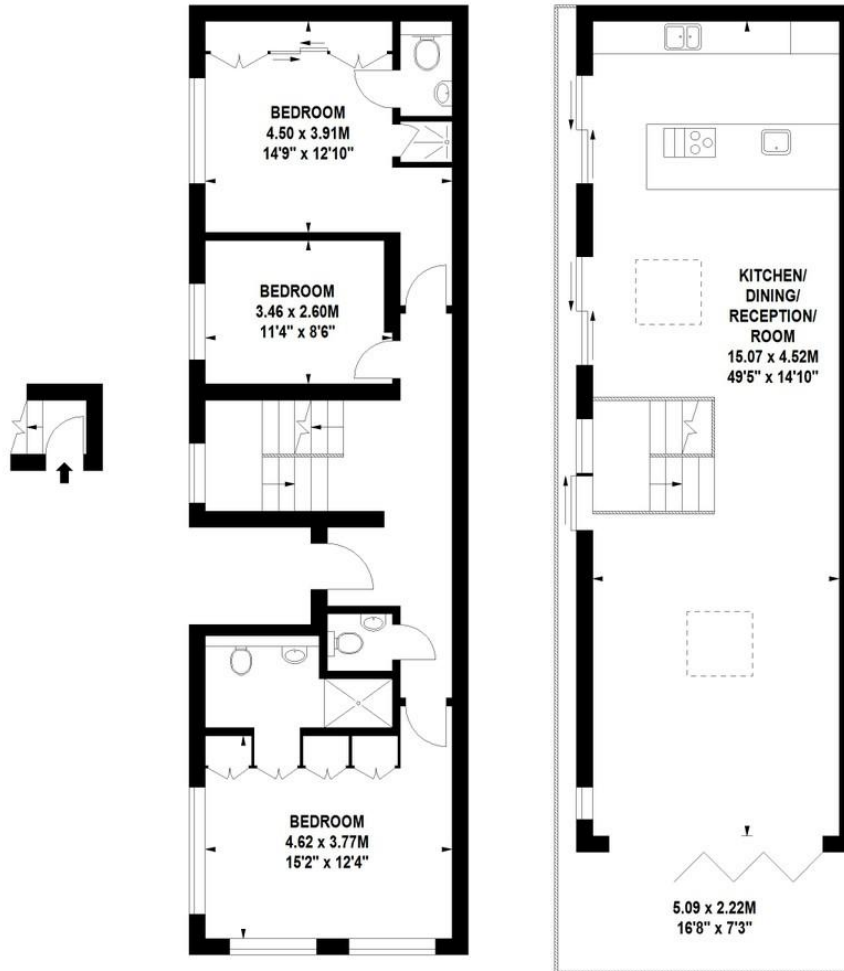
WHAT YOU NEED TO KNOW:

- Located off Drury Lane
- Three flats in the building
- On 3rd & 4th floors
- No bath
- Wood floors.

Floorplan

Stukeley Street , WC2B

Approximate gross internal area
142 sq m / 1528 sq ft



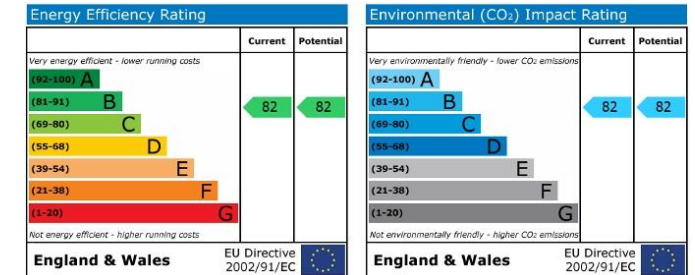
Second Floor
Entrance

Third Floor

Fourth Floor

Floor Plan produced for Tavistock Bow by Mays Floorplans © . Tel 020 3397 4594
Illustration for identification purposes only, not to scale
All measurements are maximum, and include wardrobes and window bays where applicable

EPC

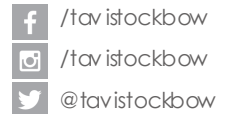


About Us

Tavistock Bow is an independent residential agency based in Covent Garden. We are niche, boutique, creative, knowledgeable, professional and approachable. We love what we do and that's why we do it.

Contact Us

- a.** 8 Tavistock Street, London WC2E 7PP
- t.** 020 7477 2177
- e.** hello@tavistockbow.com
- w.** tavistockbow.com



TAVISTOCKBOW
RESIDENTIAL